

# **Dominion SX II**

## **User Guide**

---

2.2.0

This document contains proprietary information that is protected by copyright. All rights reserved. No part of this document may be photocopied, reproduced, or translated into another language without express prior written consent of Raritan, Inc.

© Copyright 2017 Raritan, Inc. All third-party software and hardware mentioned in this document are registered trademarks or trademarks of and are the property of their respective holders.

#### FCC Information

This equipment has been tested and found to comply with the limits for a Class A digital device, pursuant to Part 15 of the FCC Rules. These limits are designed to provide reasonable protection against harmful interference in a commercial installation. This equipment generates, uses, and can radiate radio frequency energy and if not installed and used in accordance with the instructions, may cause harmful interference to radio communications. Operation of this equipment in a residential environment may cause harmful interference.

#### VCCI Information (Japan)

この装置は、クラスA情報技術装置です。この装置を家庭環境で使用すると電波妨害を引き起こすことがあります。この場合には使用者が適切な対策を講ずるよう要求されることがあります。 VCCI-A

Raritan is not responsible for damage to this product resulting from accident, disaster, misuse, abuse, non-Raritan modification of the product, or other events outside of Raritan's reasonable control or not arising under normal operating conditions.

If a power cable is included with this product, it must be used exclusively for this product.



# Contents

CS03 Certification - DSX2-16 and DSX2-48 vi

---

## Chapter 1 Features and Benefits 1

---

Package Contents.....	10
SX II Models .....	10
SX II Appliance Diagram .....	10
Supported Serial Devices .....	11
SX II Access Clients .....	12
iOS Support.....	12

## Chapter 2 Configure SX II for the First Time 13

---

Default Login Information .....	13
Initial SX II Configuration from the Remote Console.....	13
Connect a Laptop to SX II Using a Cross-Over Cable (Optional) .....	14
Initial SX II Configuration Using Command Line Interface (Optional) .....	14
Set Terminal Emulation on a Target .....	17
Set the CLI Escape Sequence .....	17

## Chapter 3 Access and Use Remote Console Features 18

---

Allow Pop-Ups .....	19
Installing a Certificate .....	19
Example 1: Import the Certificate into the Browser .....	20
Example 2: Add the SX II to Trusted Sites and Import the Certificate .....	21
Converting a Binary Certificate to a Base64-Encoded DER Certificate (Optional) .....	23
Log In to SX II and HSC .....	25
Log In to SX II and RSC .....	25
Security Warnings and Validation Messages .....	25

Standalone RSC Client Launching .....	27
Log In to SX II Admin-Only Interface .....	28
Access SX II Using an iOS Device .....	29
Change Your Password from the Remote Console .....	30
SX II Port Access Page .....	31
SX II Left Panel .....	32

---

## Chapter 4 Access Targets 34

Port Action Menu Options - Connect, Disconnect, Power On, Power Off and Power Cycle Targets.....	34
Connect to a Target.....	36
Disconnect from a Target .....	37
Power On a Target .....	37
Power Off a Target .....	38
Power Cycle a Target .....	39
Connect to Targets Using CLI - Connect, Disconnect, Power On, Power Off and Power Cycle Targets.....	39
Command Line Interface Protocols.....	43
Command Line Interface Partial Searches .....	43
Command Line Interface Tips .....	44
Command Line Interface Shortcuts .....	44
Command Line Interface High-Level Commands.....	44

---

## Chapter 5 HTML Serial Console (HSC) Help 45

HSC Functions .....	45
Emulator .....	45
Copy and Paste.....	50
Send Text File.....	50
Power Status .....	52
Power on a Target.....	52
Power Off a Target .....	53
Power Cycle a Target.....	53

---

## Chapter 6 Raritan Serial Console (RSC) Help 54

Raritan Serial Console (RSC) Functions .....	54
Emulator .....	55
Edit .....	61
Send a Text File.....	61
Toggle Power .....	63
Power On a Target .....	64
Power Off a Target .....	64
Power Cycle a Target.....	65

Browser Limitations for RSC .....	66
Standalone Raritan Serial Console Requirements .....	66
Set Windows OS Variables and Install Standalone Raritan Serial Console (RSC).....	67
Set Linux OS Variables and Install Standalone Raritan Serial Console (RSC) for Linux....	70
Setting UNIX OS Variables .....	71
Launching RSC on Windows Systems .....	72

---

## Chapter 7 Connect a Rack PDU to SX II and Configure Power Control Options 73

Connecting the SX II to the PX2 Serial Port .....	73
Connecting the SX II to the PX2 FEATURE Port .....	74

---

## Appendix A Specifications 76

SX II Dimensions and Physical Specifications .....	76
Supported Remote Connections .....	76
Supported Number of Ports and Remote Users per SX II Model .....	77
Maximum Number of Users Session .....	77
Maximum Number of Support Users Per Port .....	77
Port Access Protocol Requirements.....	78
SX II Port Pins .....	80
Port Ranges .....	81
Network Speed Settings.....	81
Default User Session Timeouts.....	83
SX II Supported Local Port DVI Resolutions .....	83
SX II Appliance LED Status Indicators.....	83
Target Cable Connection Distances and Rates.....	84

---

## Appendix B FAQs 86

---

## Appendix C SX II Support 99

SX II Release Notes and Help.....	99
Contact the Documentation Team with Feedback.....	100

---

## Index 101

## CS03 Certification - DSX2-16 and DSX2-48

To avoid potentially fatal shock hazard and possible damage to Raritan equipment:

- Do not use a 2-wire power cord in any product configuration.
- Test AC outlets at your computer and monitor for proper polarity and grounding.
- Use only with grounded outlets at both the computer and monitor.
- When using a backup UPS, power the computer, monitor and appliance off the supply.

NOTICE: This equipment meets the applicable Industry Canada Terminal Equipment Technical Specifications. This is confirmed by the registration number. The abbreviation IC, before the registration number, signifies that registration was performed based on a Declaration of Conformity, indicating that Industry Canada technical specifications were met. It does not imply that Industry Canada approved the equipment.

NOTICE: The Ringer Equivalence Number (REN) for this terminal equipment is 01. The REN assigned to each terminal equipment provides an indication of the maximum number of terminals allowed to be connected to a telephone interface. The termination on an interface may consist of any combination of devices subject only to the requirement that the sum of the Ringer Equivalence Numbers of all the devices does not exceed five.

AVIS : Le présent matériel est conforme aux spécifications techniques d'Industrie Canada applicables au matériel terminal. Cette conformité est confirmée par le numéro d'enregistrement. Le sigle IC, placé devant le numéro d'enregistrement, signifie que l'enregistrement s'est effectué conformément à une déclaration de conformité et indique que les spécifications techniques d'Industrie Canada ont été respectées. Il n'implique pas qu'Industrie Canada a approuvé le matériel.

AVIS : L'indice d'équivalence de la sonnerie (IES) du présent matériel est de 01. L'IES assigné à chaque dispositif terminal indique le nombre maximal de terminaux qui peuvent être raccordés à une interface téléphonique. La terminaison d'une interface peut consister en une combinaison quelconque de dispositifs, à la seule condition que la somme d'indices d'équivalence de la sonnerie de tous les dispositifs n'excède pas 5.

# Chapter 1 Features and Benefits



## Next-Generation Console Server

### Raritan's Next-Generation Serial Console Server

The Dominion SX II is Raritan's next-generation Serial Console Server (also known as Terminal Server) that provides IT and network administrators secure IP access and control of serial devices, anytime, anywhere. The new SX II is the most powerful, secure, reliable, easy-to-use and manageable serial-over-IP console server on the market. SX II provides convenient and productive access to networking devices, servers, PDUs, telecommunications and other serial devices.

### Ten Years of Serial Console Experience

For over ten years, thousands of customers have relied on the first generation Dominion SX for access and control of hundreds of thousands of serial devices, representing over 500 million hours of total operation. The SX II builds upon that experience with a wide range of advancements and innovations.

### Dominion Platform, User Interface and Management

Starting with a powerful, Dominion hardware platform providing performance, reliability and security, the SX II includes virtually all the Serial-over-IP features of its predecessor, Dominion compatible user interfaces and management features, plus exciting new capabilities.

### Full CLI-based Configuration and Auto-Configuration

The SX II offers complete CLI access and management via SSH, Telnet and web-based user interface, with convenient direct port access. Two script-based automatic configuration methods are available for a fast installation and for subsequent configuration changes.

### Exciting New Features and Innovations

The SX II new features include: military grade security features with 256-bit AES encryption and FIPS encryption mode, automatic DTE/DCE serial port detection, innovative at-the-rack access options, wireless modem support, IPv6 networking, script based auto-configuration and Dominion compatible user interfaces and management.

### CommandCenter Management & Scalability

With Raritan's CommandCenter, organizations can manage hundreds or even thousands of serial devices, spread across multiple locations, including branch offices.

## Powerful Hardware Platform

### Powerful New Hardware Platform

Powerful new hardware platform with 1GHz CPU engine, with an 8-fold increase in RAM. Increased flash memory, up to 8 GB, for storage and logging. Front panel LED's show port connection status.

### Wide Variety of 1U Models

Rackable, 1U models available in 4, 8, 16, 32 and 48 ports. All have dual power supplies and dual Gigabit Ethernet LAN ports. Models are available with an optional built-in modem. At-the-rack access includes RJ-45/serial, USB and KVM console.

### Powerful Serial Processing Engine

The Dominion SX II with its powerful hardware platform provides high-powered serial processing for the most extreme use cases. Up to 10 users can simultaneously connect to a serial device connected to a SX II port. Up to 200 simultaneous user sessions are supported by a given SX II console server. Port configuration time is up to 23 times faster than the original SX. Connection times are over 50 times faster.

### Dual AC Power Supplies

All models have dual, 100-240 volt AC, auto-switching power supplies with automatic failover for increased reliability.

### Dual DC Powered Models

Dual power and dual LAN, 8, 32 and 48 port DC powered models are available. These models provide the same features, serial access and performance as the AC powered models.

### Dual Gigabit Ethernet LAN on all Models

Dual gigabit Ethernet LAN ports, which can be configured for simultaneous operation or automatic failover. Dual stack IPv4 and IPv6 networking.

### Five USB Ports

The Dominion SX II has four USB 2.0 ports, three on the back panel and one on the front panel. These are available for local keyboard/mouse, 3G/4G cellular modem and for automatic configuration via USB drive. A USB 2.0 mini-B port is available for local laptop connection.

### Optional Telephone Modem

All models have the option for an internal, 56K telephone modem with RJ11 connection for emergency access and disaster recovery.

### Innovative Local Console

The Dominion SX II's local console provides multiple ways for at-the-rack access. The console includes a traditional RJ45 serial port, USB mini-B port, and even a DVI/USB KVM console.

## Productive Serial-over-IP Access



<b>Widest Variety of Serial-over-IP Access</b>	The Dominion SX II supports the widest variety of serial-over-IP connections via SSH/Telnet Clients, web-browser, CommandCenter, telephony modem, cellular modem and at-the-rack access. This includes CLI, GUI and multiple Direct Port Access methods.
<b>SSH/Telnet Client Access</b>	SSH/Telnet client access from a desktop, laptop, or handheld device. Direct Port Access via SSH Client using a username/port string syntax. Customer can upload, view and delete SSH keys for greater security.
<b>Web Browser Access</b>	Web browser access via Dominion SX II or CommandCenter user interfaces and the Raritan Serial Client (RSC).
<b>Convenient Direct Port Access</b>	Convenient Direct Port Access methods via SSH, Telnet & HTTP. IP address and TCP port-based access for Telnet and SSHv2 clients. Independent IP addresses or TCP port numbers can be assigned to access each SX II port. HTTPS-based direct access via URL. Com Port Redirection can be supported for third-party software redirectors.
<b>Cellular and Telephone Modem Access</b>	Optional external Cellular (3G/4G) modem and internal Telephone modem access for emergency access, business continuity and disaster recovery.
<b>Innovative At-the-Rack Access</b>	With the Dominion SX II, you get multiple types of local access at-the-rack. This includes: (1) Traditional RJ45 serial port, (2) Mini-USB port for laptop connection, and (3) DVI & USB-based KVM console for connection to a rackmount keyboard tray or even a KVM switch.
<b>Port Keyword Monitoring and Alerting</b>	Users can define up to 14 keywords per port. The SX II will scan the data coming from the port, and if one of the keywords is detected, it will send an alert via SNMP or e-mail. Serial devices are monitored, even when no user is connected! This results in faster notification that reduces Mean Time to Repair (MTTR).
<b>Port Logging to Syslog, NFS and Local File</b>	Port activity to and from serial devices can be logged to a Syslog server, Network File System (NFS) server or locally to the SX II device with up to 8 Gb of storage.
<b>NFS Logging Features</b>	Allows logging of all user keystrokes and server/device responses to NFS server(s). Can even be stored on the NFS server with user-defined encryption keys for greater security. Keep-alive messages in the NFS log allow easy monitoring if the managed server/device goes down.
<b>SecureChat Instant Messaging</b>	Allows for secure, instant messaging among SX II users. Enables collaboration of distributed users to increase their productivity, troubleshoot, reduce the time to resolve problems and for training purposes.

<b>Automatic Serial Device Logoff</b>	Once a user is timed out for inactivity, a user defined "logoff" command can be sent to the target. Improved security of user sessions results as serial sessions are automatically closed upon time out and not left open for possible un-authorized access.
<b>Comprehensive Serial Device Access</b>	
<b>Over Ten Years of Serial Device Management</b>	The first generation Dominion SX has been serving customers for over ten years, with over 500,000 ports sold. This represents hundreds of millions of hours of operation across a wide variety of serial devices.
<b>Automatic DTE/DCE Serial Port Detection</b>	This feature allows for a straight Cat5 connections to Cisco equipment (and other compatible devices), without rollover cables. It also means that a SX II can replace the first generation SX with its existing serial device connections.
<b>Support for the Widest Variety of Serial Devices</b>	Supports the widest variety of serial equipment including: networking routers, Ethernet switches, firewalls, UNIX/LINUX servers, Windows Servers, virtual hosts, rack PDU's, UPS systems, telecom/wireless gear. Supports multiple operating systems including SUN® Solaris, HP-UX, AIX, Linux®, Windows® Server 2012, and UNIX®.
<b>Up to 230,400 Baud Serial Connections</b>	Supports operating speeds of 1,200 to 230,400 bits-per-second for serial connections.
<b>Flexible Serial Port Options</b>	Flexible per-port serial options, including BPS, emulation, encoding, parity, flow control, stop bits, character and line delays, always-active connections and more. Can define an exit command when the user times out, as well as enable an in-line menu for port commands and power control.
<b>VT100/220/320/ANSI support</b>	Increased choice of terminal emulation options, allows support of a broader range of devices. SX II supports the following code-sets: US-ASCII (ISO 646); ISO 8859-1 (Latin-1); ISO 8859-15 (Latin-9); UTF-8 and others.
<b>Remote Power Control of Raritan PDU's (With Power Control Menu)</b>	Raritan rack PDU's (PX, PX2, PX3, RPC) can be connected to the Dominion SX II for remote power control of the equipment connected to the PDU. Remote power control can be done via the SX II GUI, SSH/Telnet Client or CommandCenter. Outlet associations can be created for serial devices with multiple power supplies, such that these outlets can be controlled with a single power command. The SX II has "Control P" style menu commands for power control available during a serial session.

**Security - Encryption**

**Strong 256 Bit AES Encryption**

The SX II utilizes the Advanced Encryption Standard (AES) encryption for added security. 128- and 256-bit AES encryption is available. AES is a U.S. government-approved cryptographic algorithm that is recommended by the National Institute of Standards and Technology (NIST) in the FIPS Standard 197.

**Validated FIPS 140-2 Cryptographic Module**

For government, military and other high security applications, the Dominion SX II utilizes a validated FIPS 140-2 Cryptographic Module for enhanced encryption. Modules tested and validated as conforming to FIPS 140-2 are accepted by federal agencies of the U.S. and Canada for the protection of sensitive information.

**Enhanced Encryption Options**

Support more encryption options: web-browser security through 256 and 128-bit SSL encryption; for SSHv2 connections, AES and 3DES are supported (client-dependent).

**Security - Authentication**

**External authentication with LDAP, Radius, TACACS & Active Directory**

Dominion SX II integrates with industry-standard directory servers, such as Microsoft Active Directory, using the LDAP, RADIUS and TACACS protocols. This allows Dominion SX II to use pre-existing username/password databases for security and convenience. SecureID is supported via RADIUS for added security.

**Upload Customer-Provided SSL Certificates**

Customers can upload to the Dominion SX II digital certificates (self-signed or certificate authority provided) for enhanced authentication and secure communication.

**Configurable Strong Password Checking**

The Dominion SX II has administrator-configurable, strong password checking to ensure that user-created passwords meet corporate and/or government standards and are resistant to brute force hacking.

**Configurable Security Banner**

For government, military and other security-conscious customers requiring a security message before user login, the SX II can display a user-configurable banner message and require acceptance before user login.

**SSH Client Certificate Authentication**

In addition to authentication via login/password, on the SSH interface users can be authenticated via SSH certificates. Each local user can be assigned up to 10 SSH keys. The key authentication takes the place of the login/password

**Local Authentication with Users, Groups and Permissions**

In addition to external authentication, the Dominion SX II supports local authentication. Administrators can define users and groups with customizable administration and port access permissions.

**Login and Password Security**

The SX II includes multiple login and password security features including password aging, idle timeout, user blocking and login limitations. Failed login attempts can be result in lockouts and user deactivation.

**SHA-2 Certificate Support**

Support for the more secure SHA-2 certificates.

**Security - Networking**

<b>Dual Stack IP Networking – IPv4 and IPv6</b>	The Dominion SX II provides dual-stack IP networking with simultaneous support of IPv4 and IPv6.
<b>IPTables Firewall support</b>	Fully configurable "iptables" firewall support. User selectable and customizable system security levels catering to wide range of security needs.
<b>Selective Static Routing Support</b>	Supports connections between modem and LAN 1, modem and LAN 2 or LAN 1 and LAN 2. This allows users to utilize two different networks (Public and Private) and modem access to KVM or Ethernet controlled devices. When used with the firewall function, secure access can be enabled.
<b>TCP/IP Port Management</b>	Can disable TELNET and SSH access if desired. Ability to change these ports in addition to HTTP, HTTPS and discovery ports
<b>Prevent Man In The Middle Attacks</b>	Enhanced security of communication channels by using client and server SSL certificates.
<b>Modem Dial-Back Security</b>	For enhanced security, Dominion SX supports modem dial-back.
<b>Rejects SSHv1 Requests</b>	Due to the many known security vulnerabilities of the SSHv1 protocol, the Dominion SX will automatically reject SSHv1 connections.
<b>End User Experience</b>	
<b>Multiple User Interfaces</b>	The SX II supports multiple user interfaces giving the user the freedom to use the interface best suited for the job at hand. This includes remote access via Raritan or third party serial client via CLI, Raritan graphical user interface (GUI), Admin-only GUI, at-the-rack access or via CommandCenter. Convenient direct port access methods available.
<b>Full Modern CLI – GUI Equivalence</b>	Full CLI management and configuration, thereby allowing scripting of any command.
<b>Broad Range of Supported Browsers</b>	Offers broad range of browsers: Firefox, Safari, Internet Explorer, Chrome, Edge.
<b>International Language Support</b>	The web-based user interface supports English, Japanese and Chinese languages. The Raritan Serial Console can support four languages: English, Japanese, Korean and Chinese
<b>PC Share Mode</b>	Up to ten users can connect and remotely access each connected serial device up to a maximum of 200 serial sessions. Sharing feature is very useful for collaboration, troubleshooting and training.
<b>Easy to Install and Manage</b>	

<b>Full CLI-based Configuration and Management</b>	The SX II offers complete CLI administration and management via SSH, Telnet and web-based user interface. Two script-based automatic configuration methods are available for a fast installation and for subsequent configuration changes.
<b>Automatic Configuration via USB Drive</b>	The SX II can be optionally configured via a CLI script on a USB drive connected to one of its USB ports. This can be used for initial configuration or subsequent updates.
<b>Automatic Configuration via TFTP Server</b>	The SX II can be optionally configured via a second method, i.e. via a CLI script contained in a TFTP server. This can be used for initial configuration or subsequent updates. The TFTP server address can be retrieved via DHCP or set by the administrator.
<b>Dominion-Compatible Management</b>	Dominion-compatible management features are available via a web-based user interface or CLI. This includes Dominion-style User Management, Device Settings, Security, Maintenance, Diagnostic and Help features. Firmware update via web browser without the use of an FTP server.
<b>Easy to Install</b>	Installation in minutes, with just a web browser, CLI or automatic configuration. Some competitive products require burdensome editing of multiple files to complete a basic installation.
<b>Configurable Event Management and Logging</b>	The SX II generates a large variety of device and user events including: device operation, device management changes, security, user activity and user administration. These can be selectively delivered to: SNMP, Syslog, email (SMTP) as well as stored on the SX II in the audit log. Support for SNMP v2 and v3,

**Raritan CommandCenter® Management and Scalability**

**Raritan’s CommandCenter Centralized Management**

Like the rest of the Dominion series, Dominion SX II features complete CommandCenter Secure Gateway integration, allowing users to consolidate all Dominion SX II and other Raritan devices into a single logical system, accessible from a single IP address, and under a single remote management interface.

**Manage Hundreds of Serial Devices**

When deployed with CommandCenter Secure Gateway, hundreds of Dominion SX II devices (and thousands of serial devices) can be centrally accessed and managed.

**Single IP Address for Administration and Device Connection**

Administrators and users can connect to a single IP address via CommandCenter Secure Gateway to manage the SX II or access the attached serial devices. This connection can be via web browser or through SSH. Option for SX II at-the-rack access while under CC-SG management.

**Bulk Firmware Upgrades**

Administrators can schedule firmware upgrades (and other operations) for multiple SX II devices from CommandCenter.

**Remote Power Control via CommandCenter Secure Gateway**

CommandCenter supports remote power control of Raritan PX rack PDU’s connected to serial ports on the Dominion SX II. For equipment with multiple power feeds, multiple power outlets can be associated together to switch equipment on or off with a single click of the mouse.

**In This Chapter**

Package Contents.....	10
SX II Models .....	10
SX II Appliance Diagram.....	10
Supported Serial Devices.....	11
SX II Access Clients .....	12
iOS Support.....	12

---

## Package Contents

Each SX II ships as a fully-configured stand-alone product in a standard 1U 19" rackmount chassis.

The SX II package includes -

- 1 - SX II appliance
- 1 - Rackmount kit
- 2 - AC power cords
- 1 - Set of 4 rubber feet (for desktop use)
- 1 - Warranty card
- 1 - SX II Quick Setup Guide

---

## SX II Models

The following SX II models are available.

Models with an **M** include an internal modem in addition to the standard features that are provided on all SX II models. For a list of standard features, see *Introduction* (see "**Features and Benefits**" on page 1).

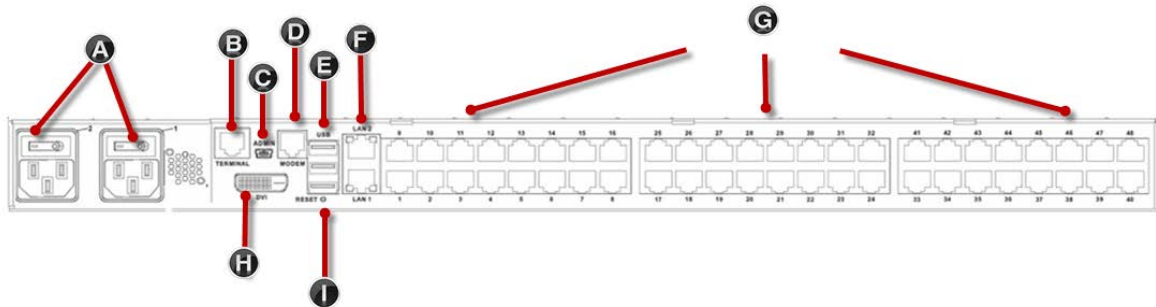
- DSX2-4 and DSX2-4M - 4-port serial console server
- DSX2-8 and DSX2-8M - 8-port serial console server
- DSX2-16 and DSX2-16M - 16-port serial console server
- DSX2-32 and DSX2-32M - 32-port serial console server
- DSX2-48 and DSX2-48M - 48-port serial console server

Model size, weight, temperature and other specifications are found in *SX II Dimensions and Physical Specifications* (on page 76).

---

## SX II Appliance Diagram

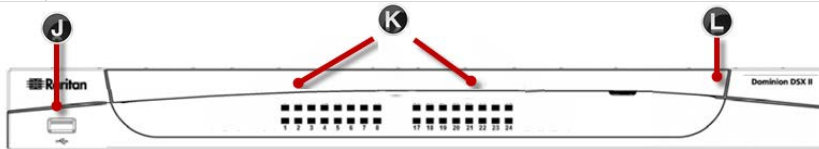
Note the image shown here is an example, so it may be different from your model.





**Appliance diagram key**

A	AC power outlet(s) 1 and 2 with independent power on/off switches
B	Terminal port/console port
C	Admin Mini-USB port
D	Modem port (based on model)
E	3 USB ports
F	LAN1 and LAN2 ports
G	Server ports
H	DVI-D port
I	Reset button

**Appliance diagram key**

J	USB port
K	LED port indicators
L	Power status (Note SX II 48 port models have their power status located above the front-panel USB port.)

**Supported Serial Devices**

- Routers
- LAN switches
- Rack PDUs
- Wireless modems
- Telecom modems
- Windows servers
- UNIX servers
- Linux servers
- Virtual hosts
- Firewalls

---

## SX II Access Clients

### HTML Serial Client (HSC)

HSC is the default client and will launch when you connect to a serial device. The HSC is an HTML-based, Java-free Serial Client.

See *HTML Serial Console (HSC) Help* (on page 45)

### Raritan Serial Console (RSC) (RSC)

RSC is the Java-based client. RSC was the default client in releases earlier than 2.1. You can access RSC by connecting to **<SX II IP Address>/rsc**

See *Raritan Serial Console (RSC) Help* (on page 54)

### Direct Port Access

Direct Port Access allows users to bypass having to use the SX II's Login dialog and Port Access page.

This feature also provides the ability to enter a username and password directly to proceed to the target, if the username and password is not contained in the URL.

### Command Line Interface (CLI)

Connect using CLI via SSH or Telnet.

See Command Line Interface Help for SX II

### Admin-Only Interface

Access the Admin Client at: <https://<SX2 IP/Hostname>/admin>.

The Admin Client does not allow target access. Use the Admin Client to perform administrator functions without using Java.

All admin functions available in the Remote Console are available in the Admin-Only Interface.

---

## iOS Support

SX II supports iOS SSH apps, both with and without VPN, to allow users access via iOS mobile devices.

See *Access SX II Using an iOS Device* (on page 29)

# Chapter 2 Configure SX II for the First Time

SX II can be configured from the Remote Console or command line interface (CLI).

## In This Chapter

Default Login Information ..... 13  
Initial SX II Configuration from the Remote Console..... 13  
Initial SX II Configuration Using Command Line Interface (Optional) ..... 14

---

### Default Login Information

SX II appliances are shipped with the following defaults. Use the defaults when you initially access SX II.

- IP address - 192.168.0.192
- IP netmask - 255.255.255.0
- Username - admin (all lowercase)
- Password - raritan (all lowercase)

---

**Important: For backup and business continuity purposes, it is strongly recommended you create a backup administrator username and password. Keep the information in a secure location.**

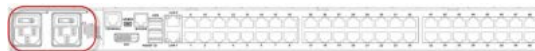
---

---

### Initial SX II Configuration from the Remote Console

1. After you have installed the SX II at the rack, connect the power cord(s) between the power connector on the SX II and an external, AC or DC power source (depending on your model).
2. You can connect the second power connector to a backup power source.

Use the power cords that came with SX II.



3. Connect an external modem to a USB port on the SX2 (optional). See Connect and Enable Global Access to an External Broadband ModemOnline Help
4. Connect your target devices or other serially managed devices to the server ports on the SX II.



Use a standard Cat5 cable to connect your target device to an available port on the back of SX II.

---

*Note: Check the pin definition of the RJ45 port on the target. It should match the pin definition on SX II.*

---

Or

If needed, connect a Raritan Nulling Serial Adapter to the serial port on your target, then plug a standard Cat5 cable into the adapter. Connect the other end of the cable to an available port on the back of SX II.

5. Flip the power switch(s) to turn SX II on.



Next, connect SX II to your network and configure your network settings for the first time.

See ***Initial SX II Configuration Using Command Line Interface (Optional)*** (on page 14) or Configure SX II Network Settings from the Remote Console.

---

### **Connect a Laptop to SX II Using a Cross-Over Cable (Optional)**

The first time you configure SX II, if you are connecting from the LAN port on laptop to the LAN1 port on SX II using a crossover cable, do the following -

1. Use cross-over cable to connect between SX II LAN1 and the laptop LAN port.
2. Set the Static IP of the LAN port that is connected to SX II to 192.168.0.191 and Network Mask to 255.255.255.0.
3. Launch your browser and access SX II via 192.168.0.192.

---

### **Initial SX II Configuration Using Command Line Interface (Optional)**

Ensure that the port settings (serial communication parameters) are configured as follows:

- Bits per Second (BPS) = 115200
- Data bits = 8
- Parity = None
- Stop bits = 1
- Flow Control = None

► **To configure SX II for the first time using CLI:**

1. Connect to SX II using any one of the following -

- Connect a computer to the Terminal port for serial console access.



- Connect a keyboard tray or KVM console to the DVI-D and USB ports.



- Connect a laptop to the MiniUSB Admin port.



2. The emulator interface opens once you are connected to SX II. Press the Enter key on your keyboard.
3. When the Login prompt appears, enter the default username `admin` and password `raritan`. Use all lowercase letters.
4. You are prompted to change the default password. Do so now, and be sure to remember this password for future login. When creating a password via CLI, it cannot begin with a space or end with a space. This does not apply to creating passwords in using the Remote Console.

By default, the network is configured for a static IP address.

5. At the `admin >` prompt, enter `config` and at the next prompt enter `network`.
6. At the `admin > config > network >` prompt, enter `interface if lan1 ipauto none ip <ip address> mask <mask> gw <gateway ip address>`

To use DHCP, enter `interface if lan1 ipauto dhcp`

7. Give the device a name to help identify it.

Enter `"name devicename <DSX2 name>"`.

Up to 32 characters are supported for the name. Spaces and special characters not supported.

8. At the `admin > config > network` prompt, enter `quit` to get into upper menu `admin > config`, then enter `time`.
9. At the `admin > config > time >` prompt, set the date and time on the SX II.
  - Enter `timezonelist` and find the number code that corresponds to your time zone.
  - Enter `clock tz <timezone code> date <date string> time <time string>`

where `<timezone code>` is the time zone code, `<time string>` is the current time in "HH:MM:SS" format and `<date string>` is the current date in "YYYY-MM-DD" format (quotes included, uses 24-hour time).

Example: `clock tz 9 date "2015-08-15" time "09:22:33"`

10. Enter `top` to return to the top level prompt.

11. Next, enter `config` and then enter `ports` at the next prompt.

You can now configure each server port that has a target device connected to it.

12. Enter `config port` then hit `?` to see the port parameters.

For example:

```
config port 1 name cisco1700 bps 9600 parity odd
flowcontrol none emulation vt100
```

You can also use port ranges or the wildcard asterisk `*`, such as

```
config port * bps 115200
```

This configures all ports for a communications speed of 115200 bps.

Or

```
config port 3-7 bps 115200
```

This configures ports 3 through 7 for 115200 bps.

Or

```
config port 1,2,7-9 bps 115200
```

This configures ports 1, 2, 7 through 9 for 115200 bps.

Repeat this step for each port with a device connected to it.

13. When done, enter `top` to return to the top level prompt.

---

### Set Terminal Emulation on a Target

The setting for terminal emulation on SX II is a property associated with the port settings for a particular target device.

Ensure that the settings for terminal emulation in the client application, such as Telnet or SSH, are capable of supporting the target device.

Ensure that the encoding in use on the host matches the encoding configured for the target device.

For example, if the character set on a Sun™ Solaris™ server is set to ISO8859-1, the target device should also be set to ISO8859-1.

Ensure that the terminal emulation on the target host connected to SX II serial port is set to VT100, VT220, VT320 or ANSI.

On most UNIX® systems, `export TERM=vt100` (or `vt220` | `vt320` | `ansi`) sets the preferred terminal emulation type on the UNIX target device. So, if the terminal type setting on a HP-UX® server is set to VT100, the Access Client should also be set to VT100.

---

### Set the CLI Escape Sequence

The escape key sequence is user-configurable and can be configured per port.

The escape sequence is programmable per port because different target operating systems and host applications may trap different escape key sequences.

Ensure the default escape sequence set on the SX II server does not conflict with a key sequence required by either the access application or the host operating system.

The console sub-mode should be displayed when the default escape key sequence `^]` is pressed.

Raritan recommends that you *do not* use `[` or `Ctrl-[`. Either of these may cause unintended commands, such as invoking the Escape Command unintentionally. This key sequence is also triggered by the arrow keys on the keyboard.

# Chapter 3 Access and Use Remote Console Features

The Remote Console is a browser-based interface accessed when you log in to SX II via a network connection. See. *Log In to SX II* (see "Log In to SX II and HSC" on page 25)

The screenshot shows the Raritan Dominion SX II web interface. The top navigation bar includes 'Port Access', 'Power', 'User Management', 'Device Settings', 'Security', 'Maintenance', 'Diagnostics', and 'Help'. The 'Port Access' tab is selected. The left sidebar contains sections for 'Time & Session', 'Device Information', 'Port States', and 'Connected Users'. The main content area is titled 'Port Access' and includes a table of port configurations.

No.	Name	Type	Status	Availability
1	Serial Port 1	AUTO	down	idle
2	Serial Port 2	AUTO	down	idle
3	Serial Port 3	DTE	up	idle
4	Serial Port 4	PowerStrip	down	idle
5	Serial Port 5	AUTO	down	idle
6	Serial Port 6	AUTO	down	idle
7	Serial Port 7	AUTO	down	idle
8	Serial Port 8	AUTO	down	idle
9	Serial Port 9	DTE	down	idle
10	Serial Port 10	DTE	down	idle

### Administrator Functions in the Remote Console

Administrators perform SX II configuration and maintenance functions from the Remote Console, such as configuring network access, adding and managing users, managing device IP addresses and so on.

Administrators can also use a version of the Remote Console that does not include any target access. See *Log In to SX II Admin-Only Interface* (on page 28).

### End User Functions in the Remote Console

From the Remote Console, end users access targets, change passwords and so on. End users can choose from two Serial Clients: HTML Serial Client, and Raritan Serial Client. See *HTML Serial Console (HSC) Help* (on page 45) and *Raritan Serial Console (RSC) Help* (on page 54).

Note that these functions can also be performed via command line interface.



## In This Chapter

Allow Pop-Ups .....	19
Installing a Certificate .....	19
Log In to SX II and HSC .....	25
Log In to SX II and RSC .....	25
Standalone RSC Client Launching .....	27
Log In to SX II Admin-Only Interface .....	28
Access SX II Using an iOS Device .....	29
Change Your Password from the Remote Console .....	30
SX II Port Access Page .....	31
SX II Left Panel .....	32

---

### Allow Pop-Ups

Regardless of the browser you are using, you must allow pop-ups in order to launch the SX II Remote Console.

---

### Installing a Certificate

You may be prompted by the browser to accept and validate the SX II's SSL certificate.

Depending on your browser and security settings, additional security warnings may be displayed when you log in to SX II.

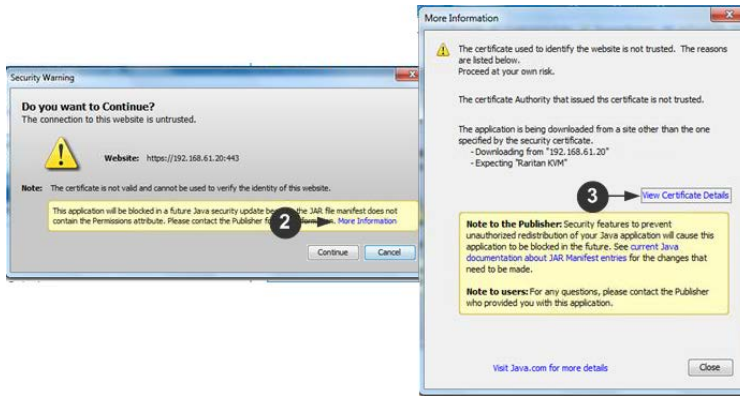
It is necessary to accept these warnings to launch the SX II Remote Console. For more information, see *Security Warnings and Validation Messages* (on page 25).

Two sample methods on how to install an SSL Certificate in the browser are provided here, both using Microsoft Internet Explorer 8® and Windows 7®.

Specific methods and steps depend on your browser and operating system. See your browser and operating system help for details.

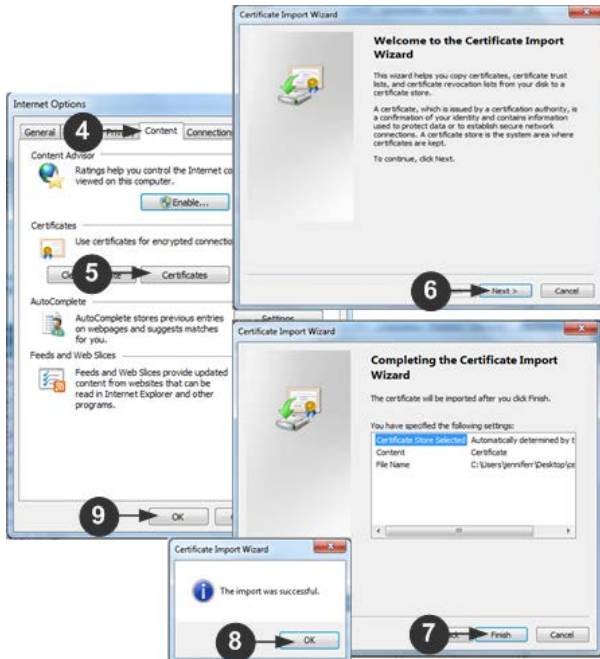
### Example 1: Import the Certificate into the Browser

In this example, you import the Certificate into the browser.



1. Open an IE browser, then log in to SX II.
2. Click More Information on the first Java™ security warning.
3. Click View Certificate Details on the More Information dialog. You are prompted to install the certificate. Follow the wizard steps.

*Note: If you are not prompted by the browser, manually select Tools > Internet Options to open the Internet Options dialog.*



1. Click the Content tab.
2. Click Certificates.

The Certificate Import Wizard opens and walks you through each step.

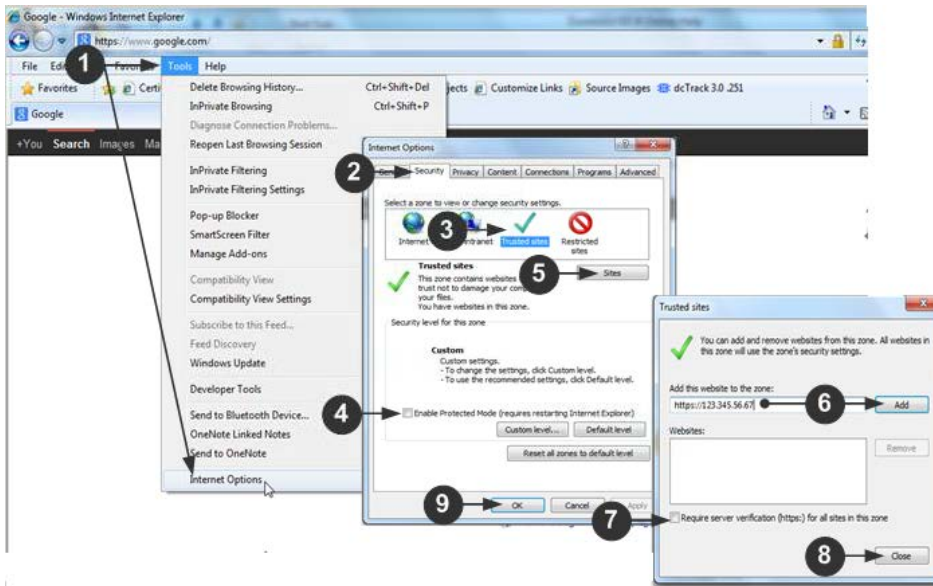
- File to Import - Browse to locate the Certificate
  - Certificate Store - Select the location to store the Certificate
3. Click Finish on the last step of the Wizard.

The Certificate is imported. Close the success message.

4. Click OK on the Internet Options dialog to apply the changes, then close and reopen the browser.

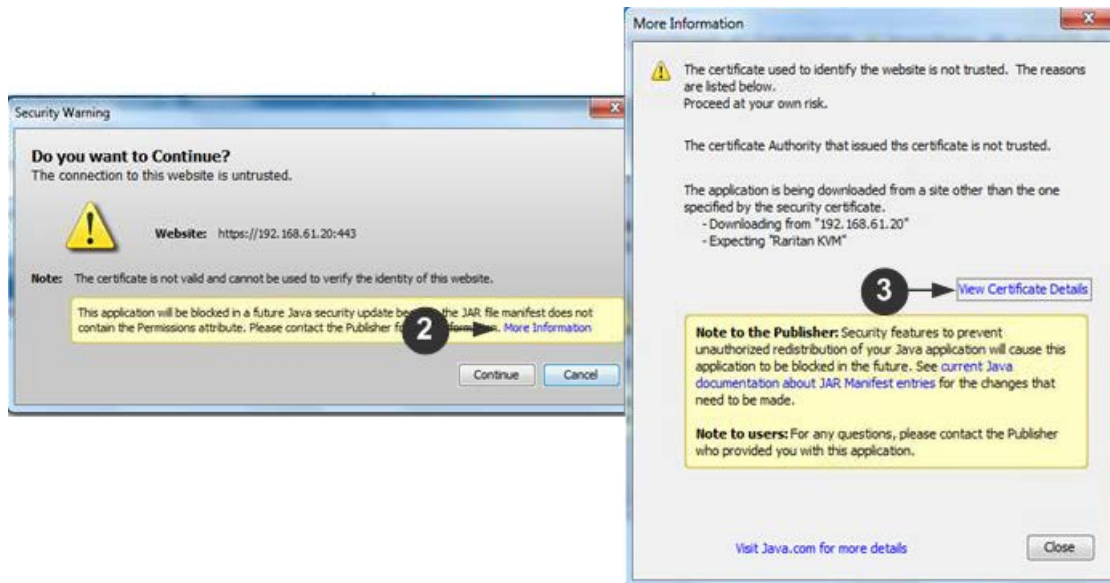
**Example 2: Add the SX II to Trusted Sites and Import the Certificate**

In this example, the SX II's URL is added as a Trusted Site, and the Self Signed Certificate is added as part of the process.



1. Open an IE browser, then select Tools > Internet Options to open the Internet Options dialog
2. Click the Security tab.
3. Click on Trusted Sites.
4. Disable Protected Mode, and accept any warnings.
5. Click Sites to open the Trusted Sites dialog.
6. Enter the SX II URL, then click Add.
7. Deselect server verification for the zone (if applicable).
8. Click Close.
9. Click OK on the Internet Options dialog to apply the changes, then close and reopen the browser.

Next, import the Certificate.



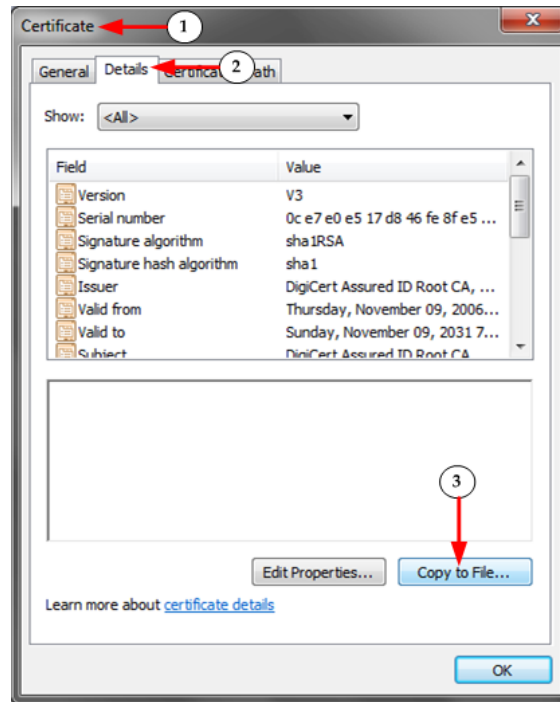
1. Open an IE browser, then log in to SX II.
2. Click More Information on the first Java™ security warning.
3. Click View Certificate Details on the More Information dialog. You are prompted to install the certificate. Follow the wizard steps.

For details see, *Example 1: Import the Certificate into the Browser* (on page 20).

### Converting a Binary Certificate to a Base64-Encoded DER Certificate (Optional)

SX II requires an SSL certificate in either Base64-Encoded DER format or PEM format.

If you are using an SSL certificate in binary format, you cannot install it. However, you can convert your binary SSL certificate.

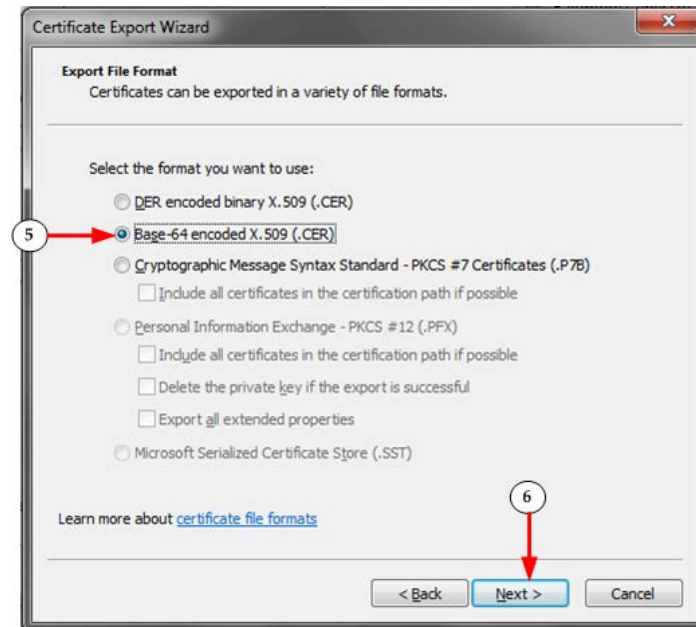


1. Locate the DEGHKVM0001.cer binary file on your Windows machine. Double-click on the DEGHKVM0001.cer file to open its Certificate dialog.
2. Click the Detail tab.

3. Click "Copy to File..."



4. The Certificate Export Wizard opens. Click Next to start the Wizard.



5. Select "Base-64 encoded X.509" in the second Wizard dialog.
6. Click Next to save the file as a Base-64 encoded X.509. You can now install the certificate on your SX II.

---

## Log In to SX II and HSC

This login procedure gives you access to the default HTML Serial Client (HSC) for target connections. If you must use RSC, see ***Log In to SX II and RSC*** (on page 25).

1. Launch a supported web browser.
2. Enter the SX II HTTP, HTTPS or DNS address provided to you by your Administrator.

---

*Note: You are always redirected to the IP address from HTTP to HTTPS.*

---

3. Enter your username and password, then click Login.
4. Accept the user agreement (if applicable).
5. If security warnings appear, accept and/or allow access.

---

## Log In to SX II and RSC

This login procedure gives you access to the Java-based Raritan Serial Console (RSC) for target connections.

1. Launch a supported web browser.
2. Connect to: **https://SX2 IP Address/rsc**

---

*Note: You are always redirected to the IP address from HTTP to HTTPS.*

---

3. Enter your username and password, then click Login.
4. Accept the user agreement (if applicable).
5. If security warnings appear, accept and/or allow access.

---

### Security Warnings and Validation Messages

When logging in to SX II using RSC, security warnings and application validation message may appear.

These include -

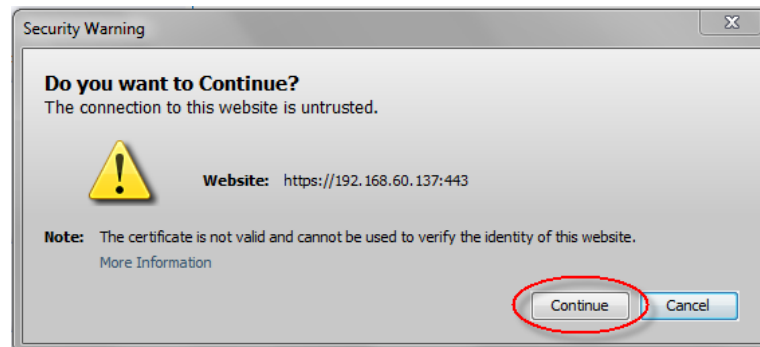
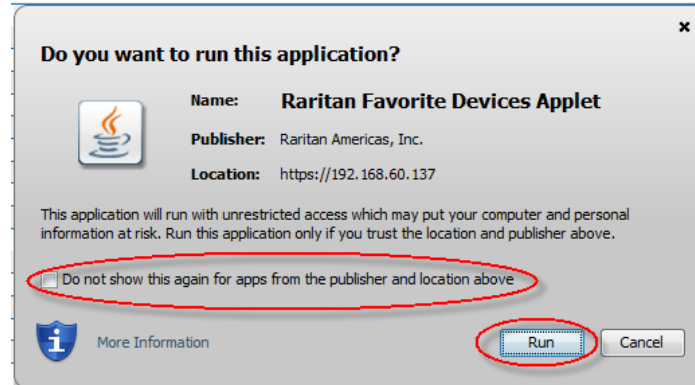
- Java™ security warnings and requests to validate SX II  
See ***Java Validation and Access Warning*** (on page 26) and ***Installing a Certificate*** (on page 19)
- Additional security warnings based on your browser and security settings  
See ***Additional Security Warnings*** (on page 26)

### Java Validation and Access Warning

When logging in to SX II, Java™ prompts you to validate SX II, and to allow access to the application.

Raritan recommends installing an SSL certificate in each SX II device in order to reduce Java warnings, and enhance security.

See SSL Certificates



### Additional Security Warnings

Even after an SSL certificate is installed in the SX II, depending on your browser and security settings, additional security warnings may be displayed when you log in to SX II.

It is necessary to accept these warnings to launch the SX II Remote Console.

Reduce the number of warning messages during subsequent log ins by checking the following options on the security and certificate warning messages:

- In the future, do not show this warning
- Always trust content from this publisher



---

## Standalone RSC Client Launching

Java 1.8.0\_40 is required to use the standalone RSC client (RSCS). Java 7 is not supported, and a Java error displays if you attempt to launch RSCS with JRE 1.7.

If Java is not installed, a prompt is displayed that the file cannot be opened, with an option to search for the program.

---

*Note: RSC cannot be launched from Edge, Chrome 45 or later, Firefox 42 or later. RSCS is recommended for these browsers.*

---

### ► URL Format for RSCS:

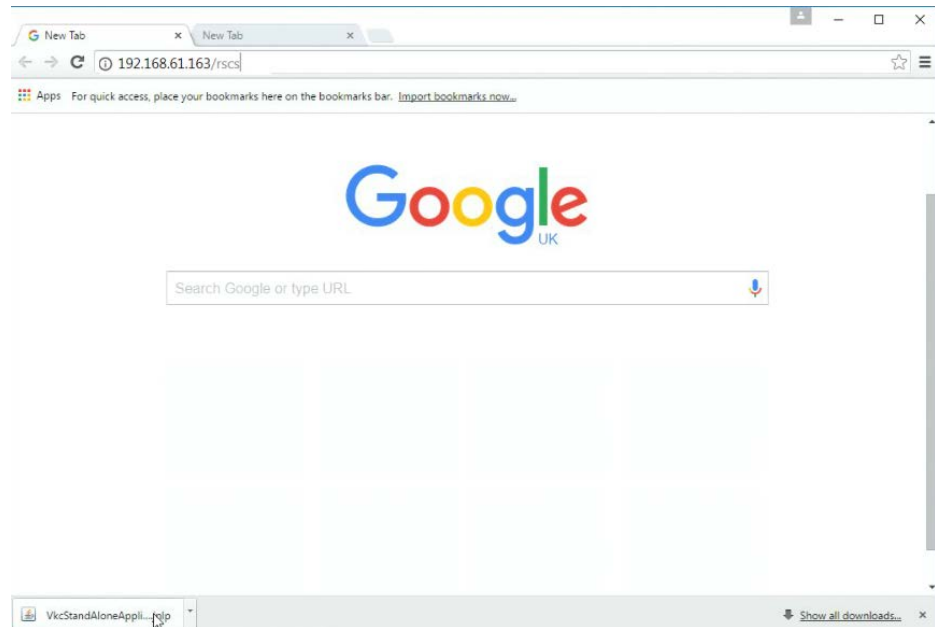
<SX II IP Address>/rscs

For example: 192.168.50.50/rscs

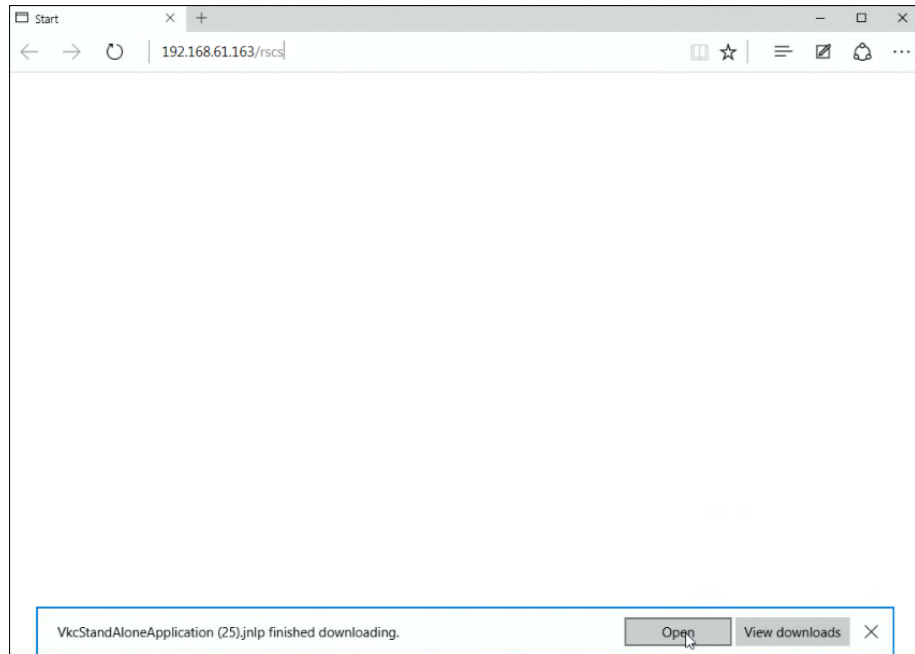
### ► RSCS Launching:

For all browsers, the RSCS standalone application needs to be downloaded everytime you use it.

- Chrome: The downloaded jnlp file must always be clicked at bottom left corner of browser window to launch. The filename is VKCStandAloneApplication.jnlp.



- Edge: You must click Save, then click Open at the bottom of the browser to launch.



- Internet Explorer: Launches automatically.
- Firefox: Use the option "Do this automatically for files like this from now on", when the jnlp file downloads, and it will launch automatically in future.
- Firefox from a Linux PC: Download the RSCS client to a directory on the Linux PC. The filename is VKCStandAloneApplication.jnlp. From a Linux console window, issue the following command to launch the RSCS client from the directory it was saved to: `javaws <VkcStandAloneApplication.jnlp file>`

---

## Log In to SX II Admin-Only Interface

You cannot connect to targets using the admin-only interface.

1. Launch a supported web browser.
2. Enter the SX II HTTP, HTTPS or DNS address provided to you by your Administrator, followed by /admin. For example: IP Address/admin

---

*Note: You are always redirected to the IP address from HTTP to HTTPS.*

---

3. Enter your username and password, then click Login.
4. Accept the user agreement (if applicable).
5. If security warnings appear, accept and/or allow access.

---

## Access SX II Using an iOS Device

You can access SX II using your iOS device when certificates are properly installed on the device. iOS requires that the certificate and all certificates in the certificate chain be installed on the device to connect properly. This can be done by emailing the certificates to the iOS device. When all certificates are installed, the Profile will be listed as Verified. If the profile is "Not Verified" for any reason, or if the certificate is not signed with the IP or DNS entry used to connect to the SX II, the connection will fail.

The following procedure shows how to generate and install valid certificates with openssl.

► **To access SX II using an iOS device:**

1. Create a simple CA.
 

```
openssl genrsa -out localCA.key 2048
openssl req -x509 -sha256 -new -key localCA.key -out localCA.cer -days 356 -subj /CN="Local CA"
```
2. Generate key, CSR, and cer for SX II.
 

```
openssl genrsa -out sx2.key 2048
openssl req -new -out sx2.req -key sx2.key -subj /CN=<SX IP ADDRESS>
openssl x509 -req -sha256 -in sx2.req -out sx2.cer -CAkey localCA.key -CA localCA.cer -days 355 -CAcreateserial -Cserial serial
```
3. Email the localCA.cer and sx2.cer files created to an email account that can be opened on the IOS device.
4. Open the email through the iOS device mail app and click on the localCA.cer to install the certificate. Follow prompts and trust the certificate.
5. Repeat for the sx2.cer.
6. Install the sx2.key and then the sx2.cer onto the SX II.
7. Reboot the SX II.
8. Use any browser on the iOS device to connect to the SX II. If there is any error in the certificate or it is not trusted, the javascript client will immediately disconnect when attempting to connect.

---

## Change Your Password from the Remote Console

---

*Note: You can also update passwords using command line interface. See [Change Your Password Using CLI](#).*

---

- To change your password, open the Change Password page by selecting User Management > Change Password.

A confirmation that the password was successfully changed is displayed after you change it.

If strong passwords are in use, this page displays information about the format required for the passwords.

For more information, see [Strong Passwords](#).

The screenshot shows a web interface with a navigation menu at the top containing 'Port Access', 'Power', 'User Management', and 'Device Settings'. Below the menu is a breadcrumb trail: 'Home > User Management > Change Password'. The main content area has a blue header 'Change Password'. There are three input fields labeled 'Old Password', 'New Password', and 'Confirm New Password'. At the bottom of the form are two buttons: 'OK' and 'Cancel'.

---

**Important: If the administrator password is forgotten, SX II must be reset to the factory default from the Reset button on the rear panel and the initial configuration tasks must be performed again.**

---

## SX II Port Access Page

After a successful login, the Port Access page opens listing all ports along with their status and availability.

Note that target access is not enabled in the Admin-Only Interface version of the Remote Console.

**Raritan**  
A brand of **Legrand**

**Port Access** | Power | User Management | Device Settings | Security | Maintenance | Diagnostics | Help

Home > Ports

**Port Access**

*Click on the individual port name to see allowable operations.*

No.	Name	Type	Status	Availability
1	<a href="#">Serial Port 1</a>	AUTO	down	idle
2	<a href="#">Serial Port 2</a>	AUTO	down	idle
3	<a href="#">Serial Port 3</a>	DTE	up	idle
4	<a href="#">Serial Port 4</a>	PowerStrip	down	idle
5	<a href="#">Serial Port 5</a>	AUTO	down	idle
6	<a href="#">Serial Port 6</a>	AUTO	down	idle
7	<a href="#">Serial Port 7</a>	AUTO	down	idle
8	<a href="#">Serial Port 8</a>	AUTO	down	idle
9	<a href="#">Serial Port 9</a>	DTE	down	idle
10	<a href="#">Serial Port 10</a>	DTE	down	idle

-1/2-page
  Rows per Page

**Time & Session:**  
 August 29, 2017 17:56:12  
 User: admin  
 State: 29 min idle  
 Your IP: 192.168.32.172  
 Last Login: Aug 24, 2017 20:51:10

**Device Information:**  
 Device Name: Annette\_SX2  
 IP Address: 192.168.61.181  
 Firmware: 2.2.0.5.1825  
 Device Model: DSX2-16M  
 Network: LAN1  
 PowerIn1: on  
 PowerIn2: on

**Port States:**  
 1 Port: up  
 15 Ports: down  
 16 Ports: idle

**Connected Users:**  
 admin (192.168.32.172)  
 29 min idle

[Online Help](#)

Ports are numbered from 1 up to the total number of ports available for the SX II. For example, Port\_1 - Port\_48, Port\_1 - Port\_32.

"SerialPort"\_"Port #" are what make up the default name the physical port until a name is configured for the port. Once a name is designated for a port, the name stays with the port until the name is edited or SX II is factory reset.

Port type includes:

- Auto - No target connected
- DTE - DCE target is connected or this port is forced to be configured as DTE.
- DCE - DTE target is connected or this port is forced to be configured as DCE.

Sort by Port Number, Port Name, Status (Up and Down), and Availability (Idle, Connected, Busy, Unavailable, and Connecting) by clicking on the column heading.

Click on any port that listed and marked as Available to open its Port Action menu so you can then manage the target. For more information, see **Port Action Menu Options - Connect, Disconnect, Power On, Power Off and Power Cycle Targets** (on page 34).

Note that in the Remote Console, you can also quickly access a powerstrip's page from the Port Access page by clicking on the Powerstrip link in the Type column.

No.	Name	Type	Status
1	Serial Port 1	AUTO	down
2	LX	DTE	up
3	Powerstrip	PowerStrip	down
4	Serial Port 4	AUTO	down

## SX II Left Panel

The left panel contains the following information.

Note that some information is conditional - meaning it is displayed based on your role, features being used and so on. Conditional information is noted here.

Information	Description	Displayed when?
Time & Session	The date and time the current session started	Always
User	Username	Always

Information	Description	Displayed when?
State	The current state of the application, either idle or active. If idle, the application tracks and displays the amount time the session has been idle.	Always
Your IP	The IP address used to access SX II.	Always
Last Login	The last login date and time.	Always
Under CC-SG Management	The IP address of the CC-SG device managing the SX II.	When SX II is being managed by CC-SG.
Device Information	Information specific to the SX II you are using.	Always
Device Name	Name assigned to the SX II you are accessing.	Always
IP Address	The IP address of the SX II you are accessing.	Always
Firmware	Current version of firmware installing on the SX II.	Always
Device Model	The model of the SX II you are accessing.	Always
Network	LAN1, or LAN1 and LAN2 if you are in dual LAN mode.	Always
PowerIn1	Status of the power 1 outlet connection. Either on or off, or Auto-detect off	Always
PowerIn2	Status of the power 2 outlet connection. Either on or off, or Auto-detect off	Always
Port States	The statuses of the ports being used by SX II - up, down, idle.	Always
Connected Users	The users, identified by their username and IP address, who are currently connected to SX II.	Always
Online Help	Links to online help.	Always
FIPS Mode	FIPS Mode: Enabled SSL Certificate: FIPS Mode Compliant	When FIPS is enabled

## Chapter 4 Access Targets

Target devices can be accessed from the Remote Console's Port Access page using either Serial Client: the default HTML Serial Client (HSC) or RSC, as well as SSH, and at-the-rack via command line interface (CLI).

Targets can also be accessed via Direct Port Access. You are connected directly to the target via SX II and no intermediate steps are needed.

This section describes connecting from the Remote Console using the Serial Clients and CLI.

### In This Chapter

Port Action Menu Options - Connect, Disconnect, Power On, Power Off and Power Cycle Targets .....	34
Connect to Targets Using CLI - Connect, Disconnect, Power On, Power Off and Power Cycle Targets .....	39

---

### Port Action Menu Options - Connect, Disconnect, Power On, Power Off and Power Cycle Targets

Once you log in to SX II via a web browser, the SX II Port Access page displays. For more information on the Port page, see ***SX II Port Access Page*** (on page 31).

From the Port Access page, use the Port Action menu to connect, disconnect, or control power of targets and power strips that are connected to SX II.

Once connected, you can manage a target with either Serial Client, HSC or RSC. See ***HTML Serial Client (HSC) Help*** (see "***HTML Serial Console (HSC) Help***" on page 45) and ***Raritan Serial Console (RSC) Help*** (on page 54).

Note that you must have permissions to a target or power strip in order to access it.

► **To access the Port Action menu for a target or power strip:**

1. Hover your mouse over a target's port name in the list and click on your mouse.

The Port Action menu appears.

Note that only currently available options, depending on the port's status and availability, are listed in the Port Action menu.

2. Choose the desired menu option for that port to execute it.



- **Connect to a Target or Power Strip** (see "**Connect to a Target**" on page 36)
- **Disconnect from a Target or Power Strip** (see "**Disconnect from a Target**" on page 37)
- **Power On a Target** (on page 37)
- **Power Off a Target** (on page 38)
- **Power Cycle a Target** (on page 39)

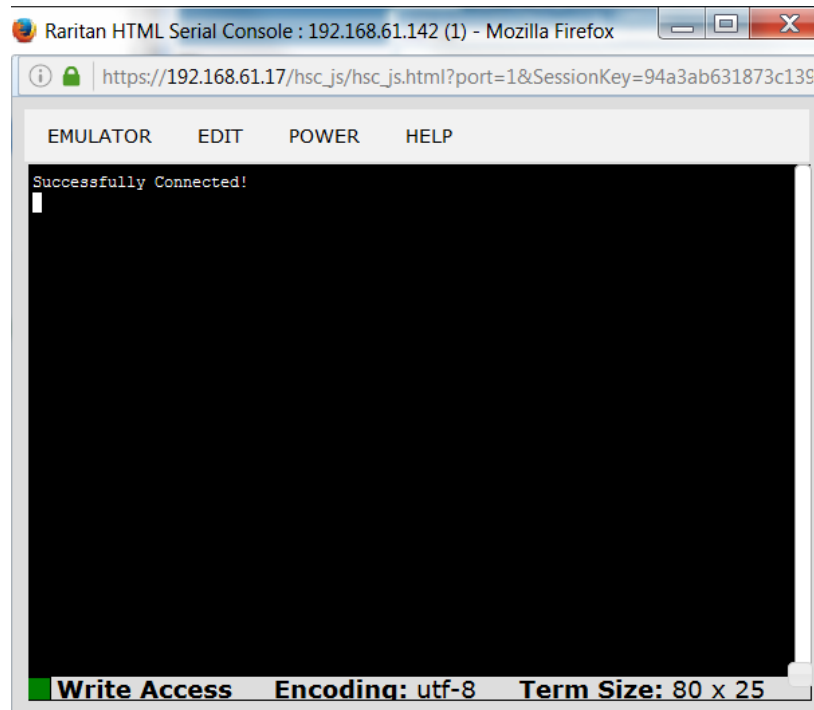
Home > Ports

**Port Access**

Click on the individual port name to see allowable operations.

No.	Name	Type
1	Connect Port 1	AUTO
4	Serial Port 4	AUTO
5	Serial Port 5	AUTO
6	New_Power_Cable	AUTO

You can then connect using the Serial Client. When you connect to a target, the serial client opens in a new window. This screenshot shows an HSC connection.



Alternatively, you can connect via Direct Port Access, if SX II is configured for Direct Port Access.

Note that you can also connect to targets via command line interface. See **Connect to Targets Using CLI - Connect, Disconnect, Power On, Power Off and Power Cycle Targets** (on page 39).

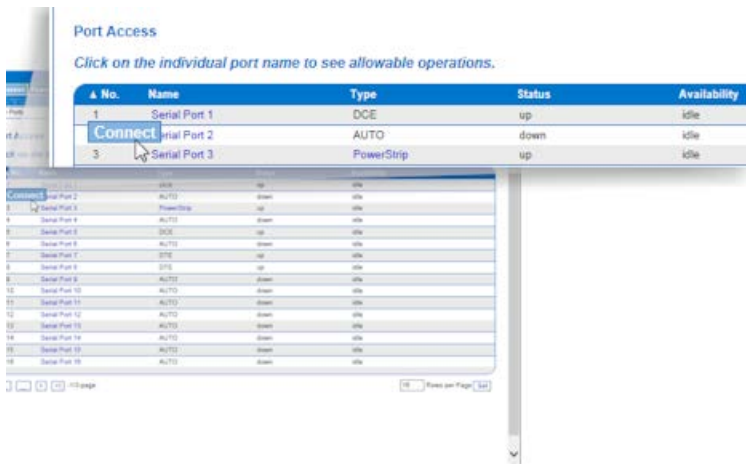
---

### Connect to a Target

Creates a new connection to the target device.

From the SX II Remote Console, HSC or RSC opens in a new window and you manage the target from there.

If you are connected to the target from the Local Console port, you access the target via command line interface. See *Raritan Serial Console (RSC) Help* (on page 54) and *Connect to Targets Using CLI - Connect, Disconnect, Power On, Power Off and Power Cycle Targets* (on page 39).

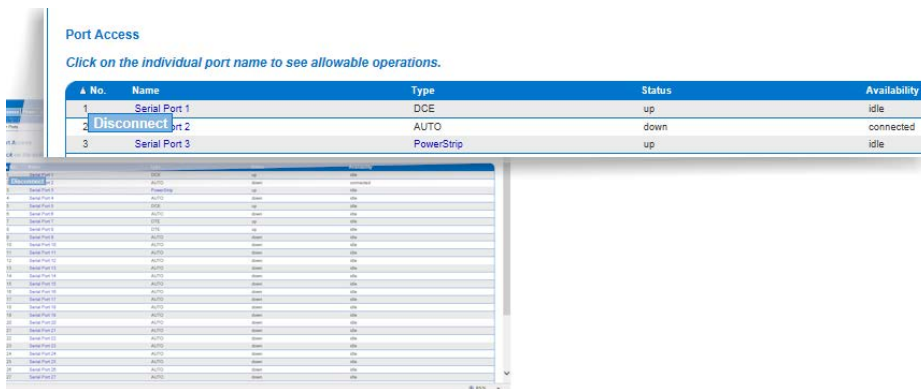


## Disconnect from a Target

Once connected to a target, the Disconnect menu option is available in the Port Action menu.

Clicking on the Disconnect option disconnects from a target, and closes the HSC or RSC window. You can also click the X icon on the window or use the Exit menu option.

See *Connect to Targets Using CLI - Connect, Disconnect, Power On, Power Off and Power Cycle Targets* (on page 39).

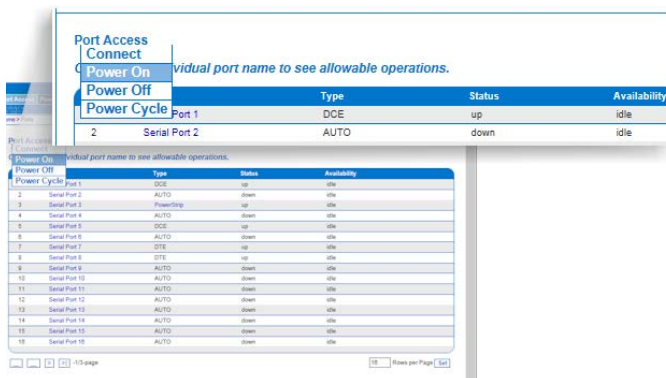


## Power On a Target

Power on the target from the Remote Console through the associated outlet.

This option is visible only when there are one or more power associations to the target, and when you have permission to manage the target's power.

You can also perform these actions through HSC, RSC, and command line interface. See *HTML Serial Client (HSC) Help* (see "*HTML Serial Console (HSC) Help*" on page 45), *Raritan Serial Console (RSC) Help* (on page 54), and *Connect to Targets Using CLI - Connect, Disconnect, Power On, Power Off and Power Cycle Targets* (on page 39).



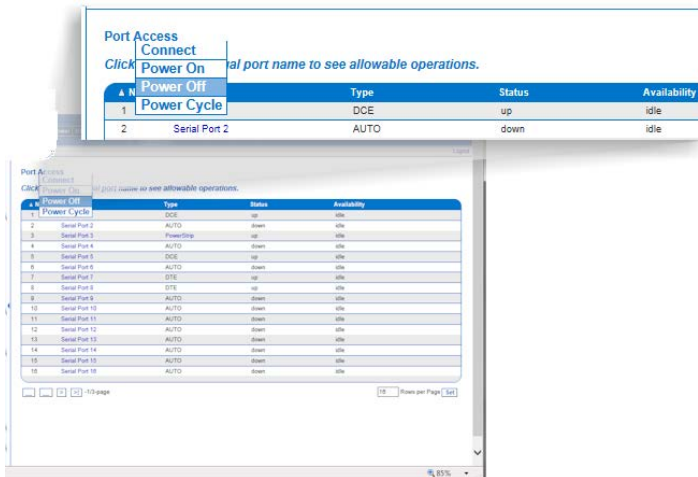
## Power Off a Target

Power off the target through the associated outlet.

This option is visible only when -

- there are one or more power associations to the target or power strip
- you have permission to manage the power

You can also perform these actions through HSC, RSC, and command line interface. See *HTML Serial Client (HSC) Help* (see "*HTML Serial Console (HSC) Help*" on page 45), *Raritan Serial Console (RSC) Help* (on page 54), and *Connect to Targets Using CLI - Connect, Disconnect, Power On, Power Off and Power Cycle Targets* (on page 39).



## Power Cycle a Target

Power cycling allows you to turn a target or power strip off and then back on through the outlet it is plugged into.

This option is visible only when -

- The power strip is connected to SX II and configured properly.
- There are one or more power associations to the target.
- You have permission to manage the power.

You can also perform these actions through HSC, RSC, and command line interface. See *HTML Serial Client (HSC) Help* (see "*HTML Serial Console (HSC) Help*" on page 45), *Raritan Serial Console (RSC) Help* (on page 54), and *Connect to Targets Using CLI - Connect, Disconnect, Power On, Power Off and Power Cycle Targets* (on page 39).



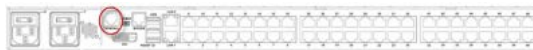
## Connect to Targets Using CLI - Connect, Disconnect, Power On, Power Off and Power Cycle Targets

Before connecting to a target, the terminal emulation and escape sequence must be configured. See *Set Terminal Emulation on a Target* (on page 17) and *Set the CLI Escape Sequence* (on page 17).

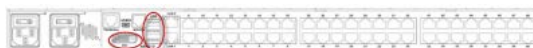
### Connect the SX II While at the Rack

While at the rack, do one of the following depending on your needs -

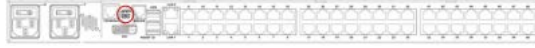
- Connect a computer to the Terminal port with a CAT-5 cable and Raritan Adapter ASCSDB9F.



- Connect a keyboard tray or KVM console to the DVI-D and USB ports.



- Connect a laptop to the Mini-USB Admin port.



Note that connecting to the SX II Local Console via the Local port is an independent access path to each connected target device.

### Video Resolution

The default, Local Console port video resolution is 1024x768@60.

By default, monitors are typically set to the highest resolution they support.

Once a monitor is connected to the SX II Local Port DVI, SX II retrieves EDID information from the monitor, including its native, preferred resolution. SX II uses the monitor's preferred, native resolution as long as it is a resolution that SX II supports. If it is not, SX II switches to a resolution it supports and that most closely matches the monitor's resolution.

For example, if a monitor with a native resolution of 2048x1600@60Hz is connected to SX II, SX II detects that it is not an SX II supported resolution and selects a resolution it does support, such as 1280x1024@60Hz.

Note that you can connect to targets using the Remote Console and manage them using Raritan Serial Console (RSC). See *Raritan Serial Console (RSC) Help* (on page 54) and *Port Action Menu Options - Connect, Disconnect, Power On, Power Off and Power Cycle Targets* (on page 34).

### Connect Commands

Connect to a port using port number or port name. Use double quotes around port names that contain space symbols. For example: "Serial Port 1".

```
admin > connect <port number>
```

OR

```
admin > connect <port name>
```

### Port Sub-Menu Commands

The port sub-menu can be reached using the escape key sequence.

Clear history buffer for this port.

```
admin > [portname] > clearhistory
```

Close this target connection. When a target is disconnected, the appropriate disconnect message appears.

```
admin > [portname] > close, quit, q
```

Display the history buffer for this port.

```
admin > [portname] > gethistory
```

Get write access for the port.

```
admin > [portname] > getwrite
```

Return to the target session.

```
admin > [portname] > return
```

Send a break to the connected target.

```
admin > [portname] > sendbreak
```

Lock write access to this port.

```
admin > [portname] > writelock
```

Unlock write access to this port.

```
admin > [portname] > writeunlock
```

Query Power status of this port.

```
admin > [portname] > powerstatus
```

Toggle Power On/Off of this port.

```
admin > [portname] > powertoggle
```

Power on the target.

```
admin > [portname] > poweron
```

Power off the target.

```
admin > [portname] > poweroff
```

Power cycle the target.

```
admin > [portname] > powercycle
```



---

### Command Line Interface Protocols

- SSH (Secure Shell) via IP connection
- Telnet via IP connection
- Local Console via the Local Port and Mini-USB port
- Terminal port

If SX II has an internal modem and console mode is enabled, the modem interface can also be accessed from CLI.

Many SSH/TELNET applications are available such as PuTTY, SSH Client and OpenSSH Client. These can be located and downloaded from the Internet.

---

### Command Line Interface Partial Searches

Enter the first few characters of command and press the Tab key on your keyboard in order to locate a specific command.

The command line interface (CLI) completes the entry if the characters form an exact match.

For example entering

```
admin > Config > us
```

and then pressing the Tab key, returns the result `users`.

If an exact match is not found, all of the commands at the same level the CLI hierarchy that are potential matches are listed.

For example, entering

```
admin > Config > User > add
```

and then pressing the Tab key, returns results for `addgroup` and `adduser`.

If needed, enter additional text to make the entry unique and press the Tab key to complete the entry. Alternatively, use a command from the list.

---

### Command Line Interface Tips

- When commands are displayed as a list, they are in alphabetical order.
- Commands are not case sensitive.
- Commands without arguments default to show current settings for the command.
- A command's parameters are usually parameter-value pairs in which the parameter name is followed by a space and the value.
- Typing a question mark ( ? ) after a command displays help specific to the command.

---

### Command Line Interface Shortcuts

- Press the Up arrow key to display the last entry.
- Press Backspace to delete the last character typed.
- Press Ctrl + C to terminate a command or cancel a command if you typed the wrong parameters.
- Press Enter on your keyboard to execute the command.
- Press Tab on your keyboard to complete a command. Tab also completes parameters and values (if the value is part of an enumerated set).

---

### Command Line Interface High-Level Commands

The CLI is menu based. Some commands move to a menu with a different command set.

The following common commands can be used at all levels of the command line interface (CLI):

- `top` - Return to the top level of the CLI hierarchy, or the username prompt.
- `history` - Displays the last 200 commands the user entered into the SX II CLI.
- `logout` - Logs the user out of the current session.
- `quit` - Moves the user back one level in the CLI hierarchy.
- `help` - Displays an overview of the CLI syntax.

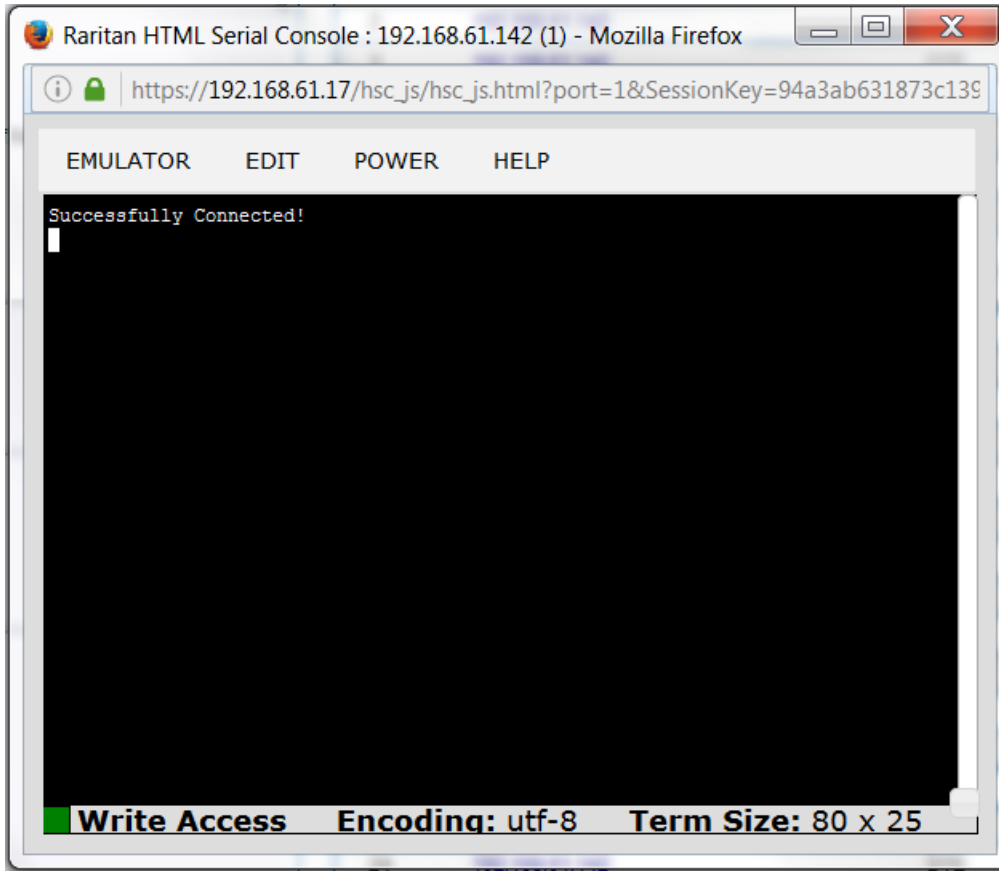
## Chapter 5 HTML Serial Console (HSC) Help

Use HSC to connect to serial targets from SX II. HSC is also launched when accessing SX II targets in CC-SG. **Note:** HSC does not support CC-SG's proxy mode in release 6.2.

---

*Note: You can also access targets via Direct Port Access, command line interface (CLI), local port GUI, and SSH.*

---



### In This Chapter

HSC Functions..... 45

---

### HSC Functions

---

#### Emulator

---

**IMPORTANT:** HSC sessions are affected by the SX II Idle Timeout.

---

---

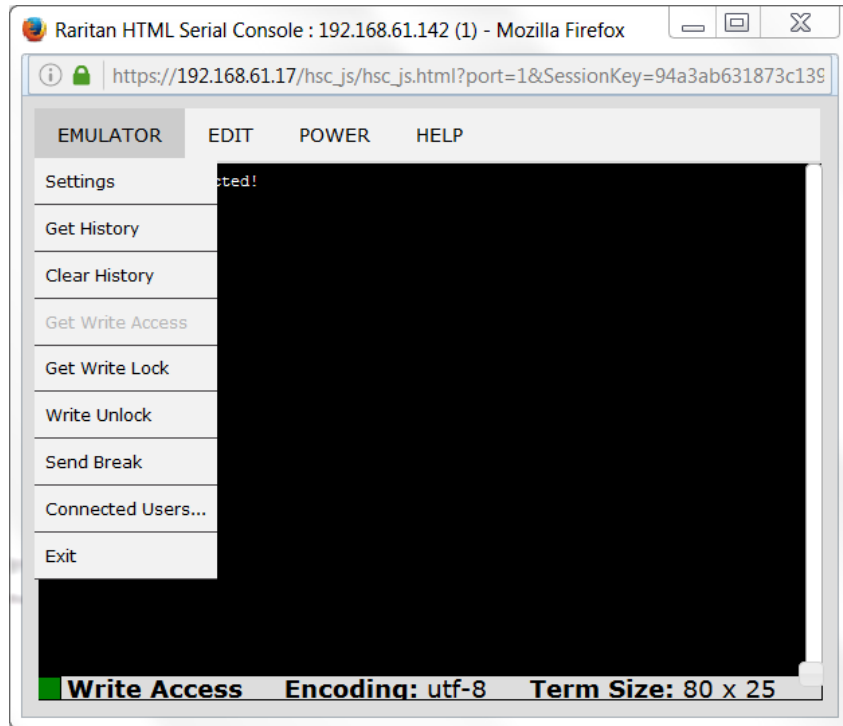
If you have not changed the SX II Idle Timeout setting from the default, your session could be closed automatically if it exceeds the Idle Timeout period.

Change the default Idle Timeout setting and then launch the HSC. See Login Limitations for details on changing the Idle Timeout setting.

---

### Access Emulator Options

1. Select the Emulator drop-down menu to display a list of options.



### Settings

---

*Note: An Administrator can set Terminal emulation settings using Setup > Port Configuration.*

---

1. Choose Emulator > Settings. The Terminal Properties dialog displays the default settings.

**Terminal Properties**

Columns: <input style="width: 40px;" type="text" value="80"/>	Rows: <input style="width: 40px;" type="text" value="25"/>
Foreground: <input style="width: 40px;" type="text"/>	Background: <input style="width: 40px;" type="text"/>
Font size: <input style="width: 40px;" type="text" value="11"/>	Scrollback: <input style="width: 60px;" type="text" value="1000"/>
Encoding: <input style="width: 80px;" type="text" value="utf-8"/>	Language: <input style="width: 80px;" type="text" value="English"/>
Backspace Sends: <input style="width: 80px;" type="text" value="Ctrl-H"/>	

2. Set the terminal size by selecting the number of Columns and Rows. Default is 80 by 25.
3. Set the Foreground and Background colors. Default is white on black.
4. Set the Font size. Default is 11.
5. Set the Scrollback number to indicate the number of lines available for scrolling.
6. Choose one of the following from the Encoding drop-down menu:
  - US-ASCII
  - ISO-8859-1
  - ISO-8859-15
  - UTF-8
  - Shift-JIS
  - EUC-JP
  - EUC-KR
7. Choose one of the following from the Language drop-down menu:
  - English
  - Japanese
  - Korean
  - Chinese
  - Bulgarian
8. The Backspace Sends default is ASCII DEL, or you can choose Control-H from the Backspace Sends drop-down menu.

9. Click OK to save. If you changed the Language setting, the HSC changes to that language when the Display Settings window is closed.

### Get History

History information can be useful when debugging, troubleshooting, or administering a target device. The Get History feature:

- Allows you to view the recent history of console sessions by displaying the console messages to and from the target device.
- Displays up to 512KB of recent console message history. This allows a user to see target device events over time.

When the size limit is reached, the text wraps, overwriting the oldest data with the newest.

---

*Notes: History data is displayed only to the user who requested the history.*

---

To view the Session History, choose Emulator > Get History.

### Clear History

- To clear the history, choose Emulator > Clear History.

### Get Write Access

Only users with permissions to the port get Write Access. The user with Write Access can send commands to the target device. Write Access can be transferred among users working in the HSC via the Get Write Access command.

To enable Write Access, choose Emulator > Click Get Write Access.

- You now have Write Access to the target device.
- When another user assumes Write Access from you:
  - The HSC displays a red block icon before Write Access in the status bar.
  - A message appears to the user who currently has Write Access, alerting that user that another user has taken over access to the console.

### Get Write Lock

Write lock prevents other users from taking the write access while you are using it.

1. To get write lock, choose Emulator > Get Write Lock.
2. If Get Write Lock is not available, a request rejected message appears.

### Write Unlock

To get Write Unlock, choose Emulator > Write Unlock.

### Send Break

Some target systems such as Sun Solaris servers require the transmission of a null character (Break) to generate the OK prompt. This is equivalent to issuing a STOP-A from the Sun keyboard.

Only users with Write Access privileges can send a break.

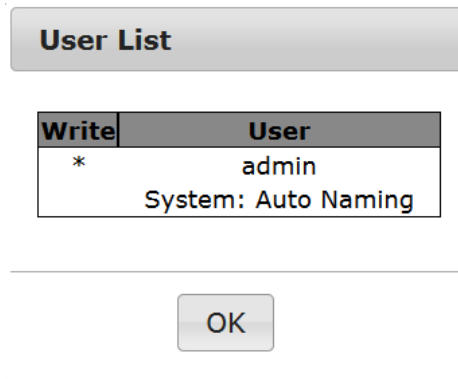
To send an intentional “break” to a Sun Solaris server:

1. Verify that you have Write Access. If not, follow the instructions in the previous section to obtain write access.
2. Choose Emulator > Send Break. A Send Break Ack (Acknowledgement) message appears.
3. Click OK.

### Connected Users

The Connected Users command allows you to view a list of other users who are currently connected on the same port.

1. Choose Emulator > Connected Users.



2. A star appears in the Write column for the User who has Write Access to the console.

### Exit

1. Choose Emulator > Exit to close the HSC.

---

### Copy and Paste

Data on the current visible page can be selected for copying. Copy and Paste are accessible in the HSC by right click in the terminal window. Select Copy or Paste in the context menu that appears.

If you need to paste a large amount of data, it is better to save the data in a file and use the Send a Text File function. Pasting a large amount of data in a browser windows can cause the browser to hang as it processes the data. See *Send a Text File* (see "*Send Text File*" on page 50).

When pasting data to a port, the end of a line is sent as a carriage return. The Cut option on the right-click menu is disabled.

Do not use the Delete option that appears in the right-click menu of IE and some versions of Firefox. This Delete option will remove display lines entirely from the emulator window.

#### ► Browser-specific behaviors

When copying from IE or Edge browsers, there are no end of line characters in the copied data. The pasted data appears to be all in one line and contains many spaces. When pasting back into a HSC window, the data may appear to be misaligned, but the data is complete.

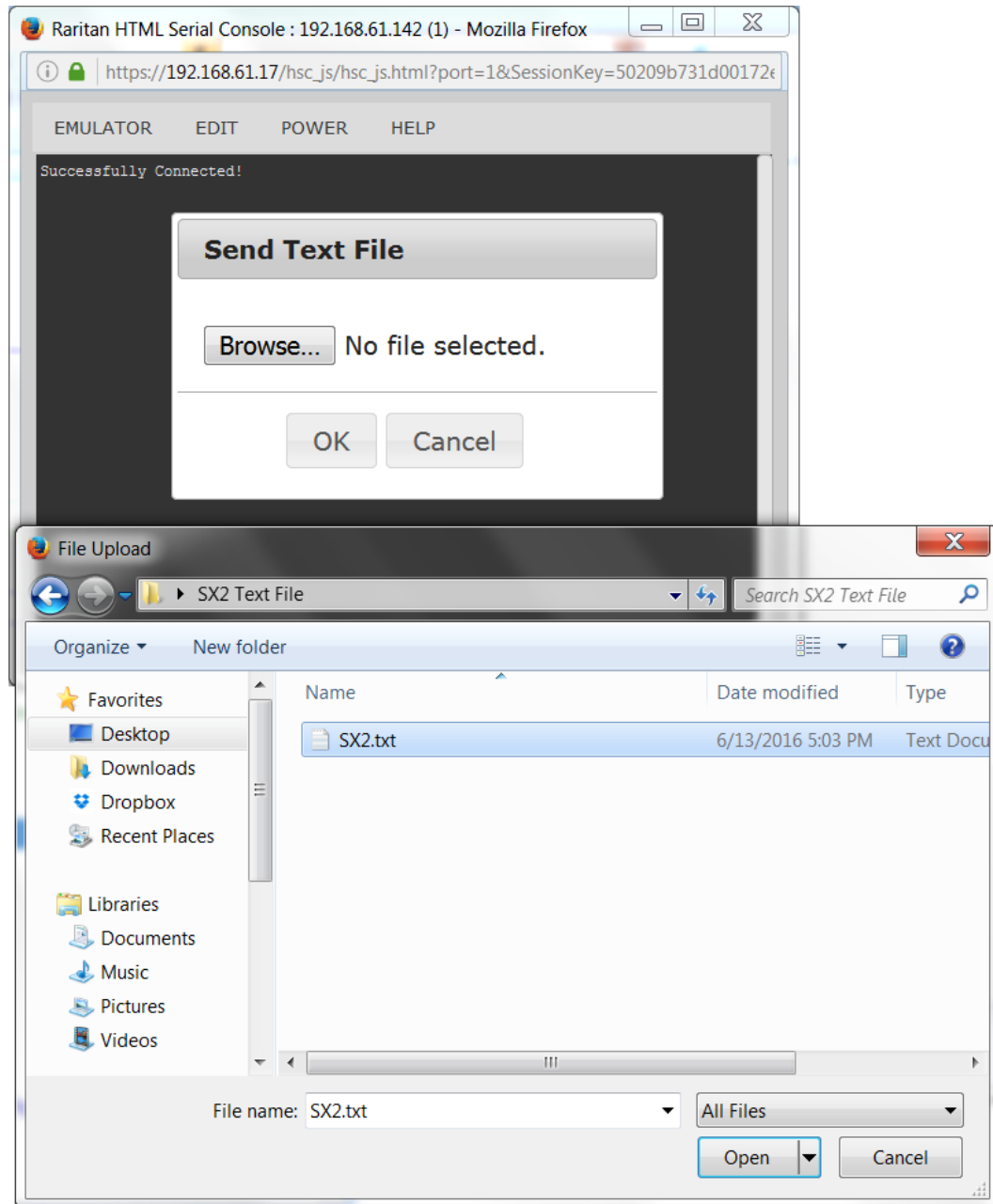
---

### Send Text File

1. Select Edit> Send Text File.
2. In the Send Text File dialog, click Browse to find the text file.
3. Click OK.
  - When you click OK, Raritan Serial Console (RSC) sends whatever file you selected directly to the port.



- If there is currently no target connected, nothing is visible on the screen.



► **Note, if you are using a Mac® and/or Safari®, do the following in order to use this feature:**

1. In Safari, select Preferences.
2. Under the Security tab, select "Manage Website Settings"

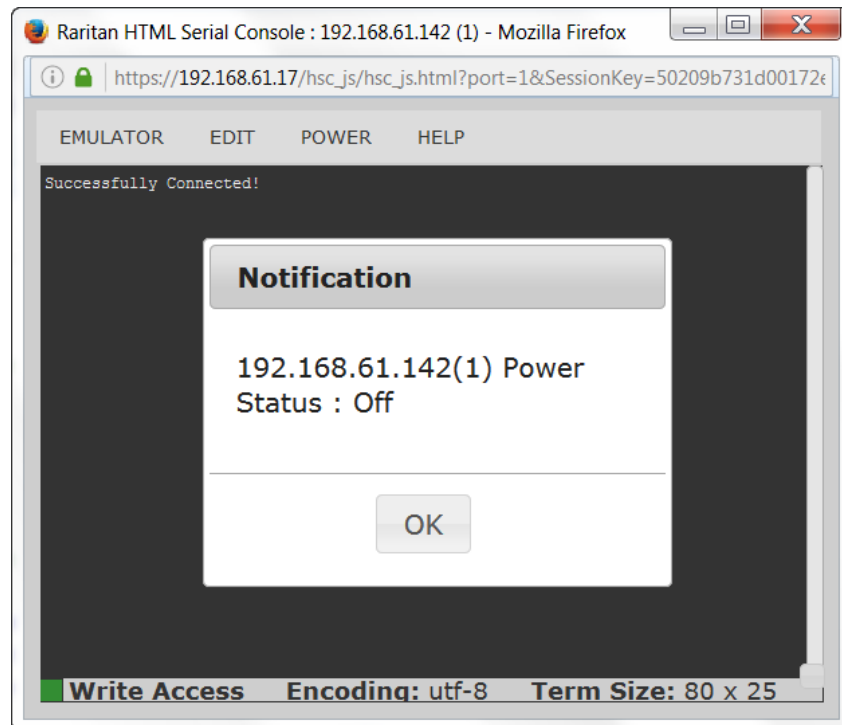
3. Click on the SX II website.
4. Select "Run in unsafe mode" from the drop-down box.
5. Restart Safari.

---

### Power Status

Power Status in HSC shows the status of the outlet the target is plugged into.

1. Choose Power > Power Status.
2. The Notification dialog shows the status of the outlet as ON or OFF.



---

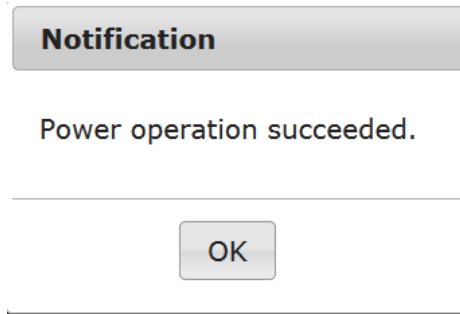
### Power on a Target

Use this option to power on a target from HSC.

This option is visible only when there are one or more power associations to the target, and when you have permission to manage the target's power.

1. Select Power> Power On.

- Click OK in the success message.



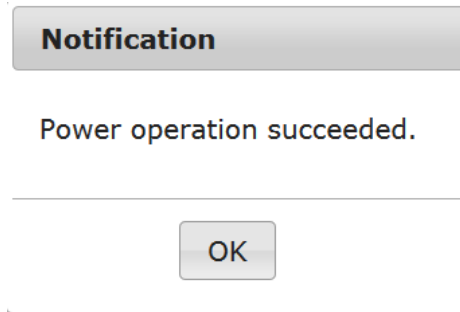

---

### Power Off a Target

Use this option to power off a target from HSC.

This option is visible only when there are one or more power associations to the target, and when you have permission to manage the target's power.

- Select Power> Power Off.
- Click OK in the success message.




---

### Power Cycle a Target

Power cycling allows you to turn a target off and then back on through the outlet it is plugged into.

This option is visible only when -

- there are one or more power associations to the target
- the target is already powered on (the port status is Up)
- you have permission to manage the target's power

- Choose Power> Power Cycle.
- Click OK in the success message.

# Chapter 6 Raritan Serial Console (RSC) Help

To use RSC, connect to: **https://SX II IP Address/rsc**

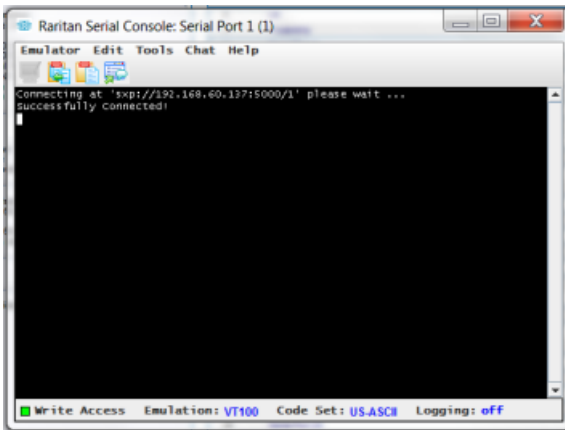
Use Raritan Serial Console (RSC) to connect to serial targets from the SX II Remote Console.

Alternatively, install RSC as a standalone-client.

The RSC stand-alone client uses the SX II IP address and the target's port number to connect directly to the target, so you do not have to connect to the Remote Console and then connect to the target. For details, see Standalone Raritan Serial Console Installation.

Download the standalone RSC from the Raritan support web site at <http://www.raritan.com/support>

*Note: You can also access targets via Direct Port Access and command line interface (CLI).*



## In This Chapter

Raritan Serial Console (RSC) Functions .....	54
Browser Limitations for RSC .....	66
Standalone Raritan Serial Console Requirements.....	66

---

## Raritan Serial Console (RSC) Functions

The following functions are available when accessing targets via Raritan Serial Console (RSC) from the SX II Remote Console and when accessing targets via standalone RSC.

You can access RSC by connecting to **<SX II IP Address>/rsc**

---

## Emulator

---

**IMPORTANT:** Raritan Serial Console (RSC) sessions are affected by the SX II Idle Timeout.

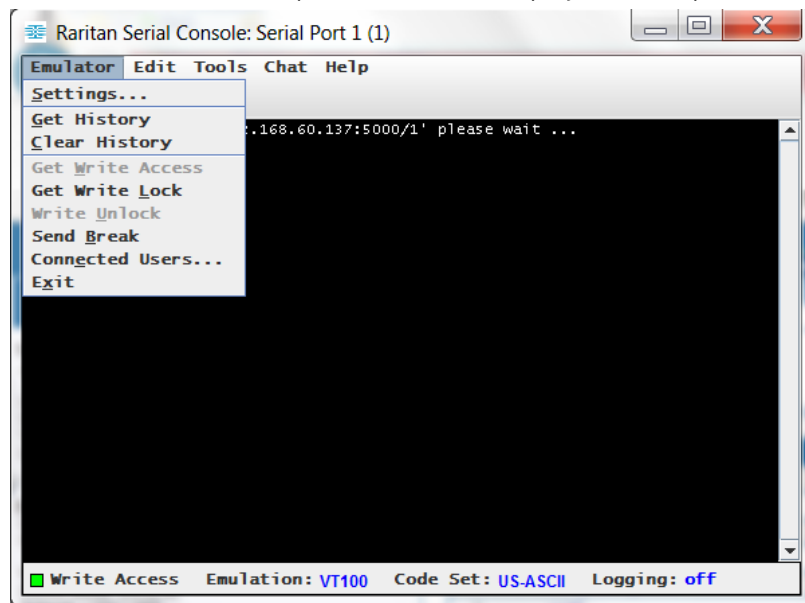
If you have not changed the SX II Idle Timeout setting from the default, your RSC session could be closed automatically if it exceeds the Idle Timeout period.

Change the default Idle Timeout setting and then launch the RSC. See Login Limitations for details on changing the Idle Timeout setting.

---

### Access Emulator Options

1. Select the Emulator drop-down menu to display a list of options.



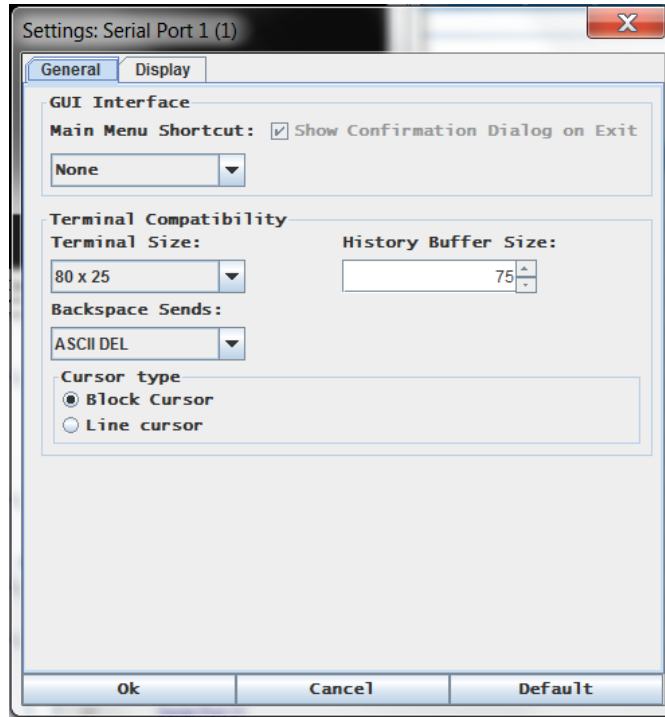
### Settings

---

*Note: An Administrator can set Terminal emulation settings using Setup > Port Configuration.*

---

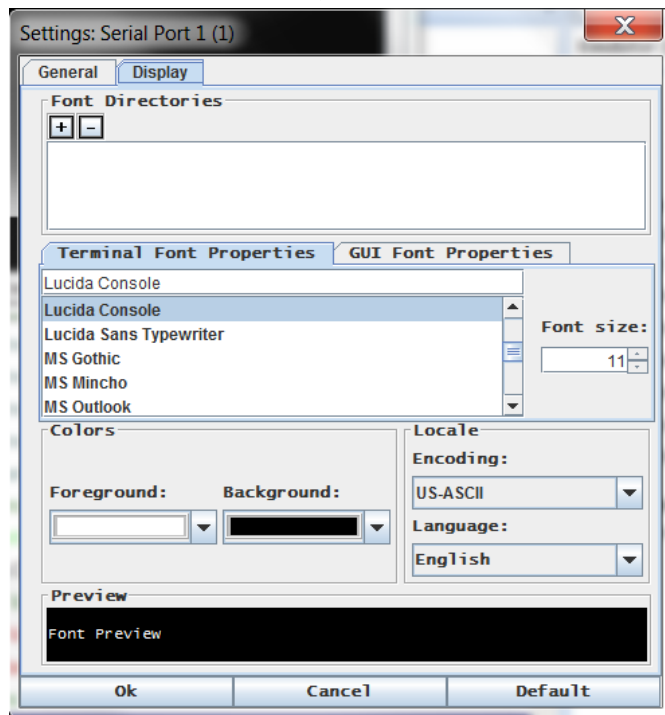
1. Choose Emulator > Settings. The Settings screen displays the General tab with the default settings.



2. The Main Menu Shortcut default is None; accept this, or choose one of the following from the Main Menu Shortcut drop-down menu:
  - F10
  - Alt
3. The Show Confirmation Dialog on Exit checkbox is selected by default, but you can deselect it based on preference.
4. The Terminal Size default is selected, or you can choose a different size from the drop-down menu.
5. The Backspace Sends default is ASCII DEL, or you can choose Control-H from the Backspace Sends drop-down menu.
6. The History Buffer Size default is 75. Type a value or use the arrows to change the buffer size.
7. The Cursor type default is Block Cursor, or you can select the Line Cursor radio button.
8. Click OK.

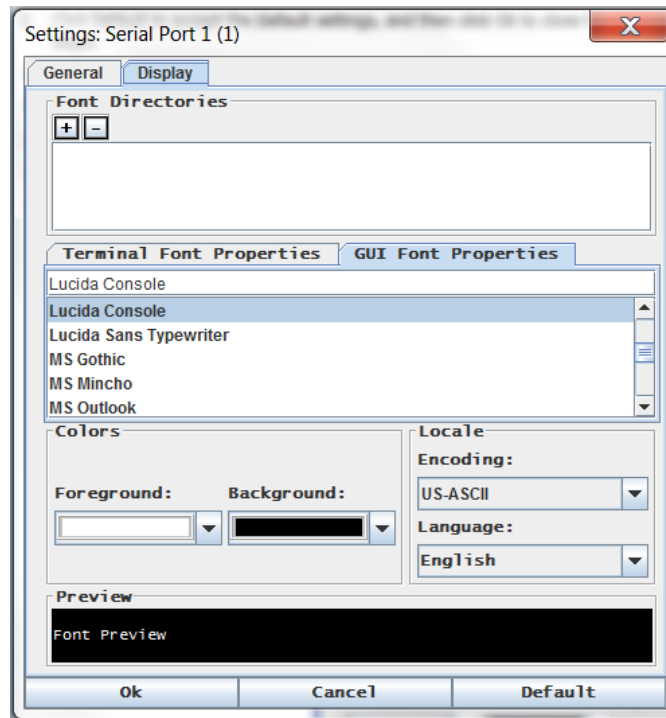
### Display Settings

1. Choose Emulator > Settings and click the Display tab.



2. Click Default to accept the Default settings, and then click Ok to close the Display Settings window. To change the settings, follow these steps:
  - a. The Terminal Font Properties default is Arial, or you can choose a font from the Terminal Font Properties scrolling list.
  - b. Click the GUI Font Properties tab.

- c. The default font property is Monospace, or you can choose a font from the GUI Font Properties scrolling list.



---

*Note: For Simplified Chinese characters, RSC supports EUC-CN encoding system.*

---

3. Choose the following from their respective drop-down menus:
  - Foreground Color
  - Background Color
4. Choose one of the following from the Encoding drop-down menu:
  - US-ASCII
  - ISO-8859-1
  - ISO-8859-15
  - UTF-8
  - Shift-JIS
  - EUC-CN
  - EUC-JP
  - EUC-KR
5. Choose one of the following from the Language drop-down menu:
  - English
  - Japanese
  - Korean



- Chinese
  - Bulgarian
6. Click Ok to close the Display Settings window. If you changed the Language setting, the RSC changes to that language when the Display Settings window is closed.

---

*Note: In case of unrecognized characters or blurry screens that might appear when RSC is launched, due to localization support, try changing the font to Courier New.*

---

### Get History

History information can be useful when debugging, troubleshooting, or administering a target device. The Get History feature:

- Allows you to view the recent history of console sessions by displaying the console messages to and from the target device.
- Displays up to 512KB of recent console message history. This allows a user to see target device events over time.

When the size limit is reached, the text wraps, overwriting the oldest data with the newest.

---

*Notes: History data is displayed only to the user who requested the history.*

---

To view the Session History, choose Emulator > Get History.

### Clear History

- To clear the history, choose Emulator > Clear History.

### Get Write Access

Only users with permissions to the port get Write Access. The user with Write Access can send commands to the target device. Write Access can be transferred among users working in the RSC via the Get Write Access command.

To enable Write Access, choose Emulator > Click Get Write Access.

- You now have Write Access to the target device.
- When another user assumes Write Access from you:
  - The RSC displays a red block icon before Write Access in the status bar.
  - A message appears to the user who currently has Write Access, alerting that user that another user has taken over access to the console.

### Get Write Lock

Write lock prevents other users from taking the write access while you are using it.

1. To get write lock, choose Emulator > Get Write Lock.
2. If Get Write Lock is not available, a request rejected message appears.

### Write Unlock

To get Write Unlock, choose Emulator > Write Unlock.

### Send Break

Some target systems such as Sun Solaris servers require the transmission of a null character (Break) to generate the OK prompt. This is equivalent to issuing a STOP-A from the Sun keyboard.

Only users with Write Access privileges can send a break.

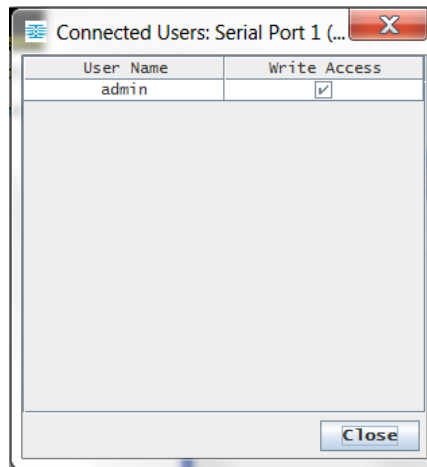
To send an intentional “break” to a Sun Solaris server:

1. Verify that you have Write Access. If not, follow the instructions in the previous section to obtain write access.
2. Choose Emulator > Send Break. A Send Break Ack (Acknowledgement) message appears.
3. Click OK.

### Connected Users

The Connected Users command allows you to view a list of other users who are currently connected on the same port.

1. Choose Emulator > Connected Users.



2. A check mark appears in the Write Access column after the name of the User who has Write Access to the console.
3. Click Close to close the Connected Users window.

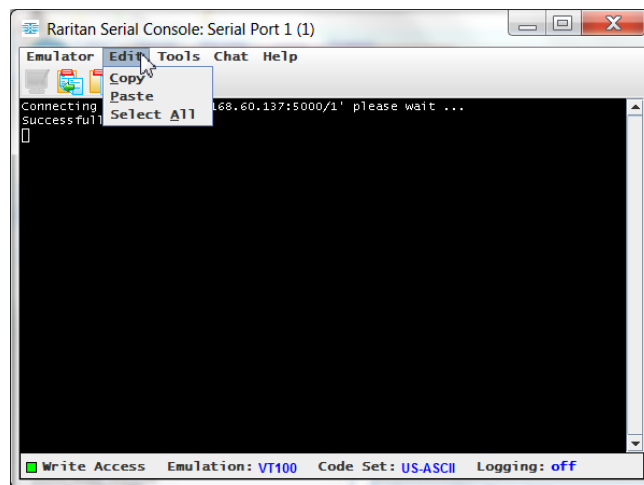
### Exit

1. Choose Emulator > Exit to close the RSC. The Exit Confirmation dialog appears.
2. Click Yes.

---

### Edit

Use the Copy, Paste, and Select All text commands to relocate and/or re-use important text.



#### ► To copy and paste all text:

1. Choose Edit > Select All.
2. Choose Edit > Copy.
3. Position the cursor at the location where you want to paste the text.
4. Click once to make that location active.
5. Choose Edit > Paste.

---

*Note: The copy-paste limit of text in RSC is 9999 lines.*

---

Keyboard shortcuts to highlight, copy, and paste all or partial lines of text:

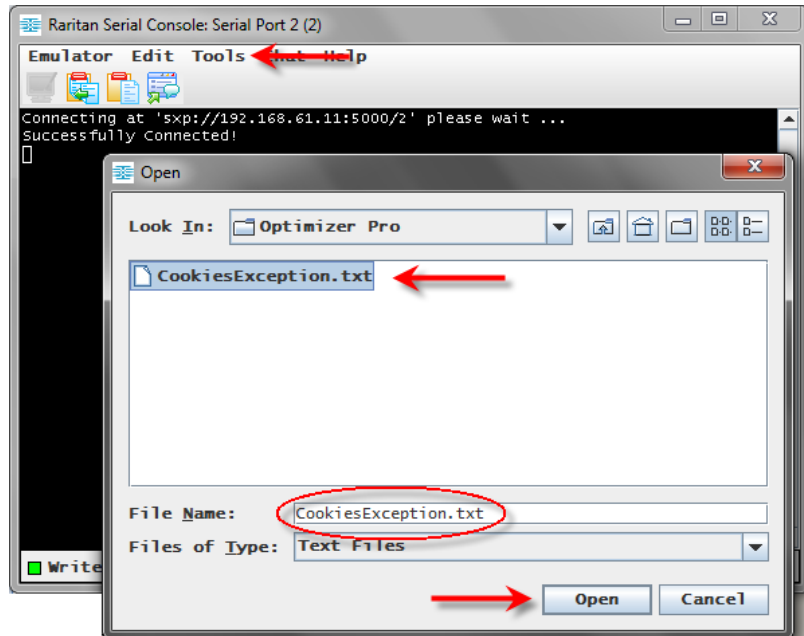
- Click and drag your mouse over the text you wish to copy.
- Use Ctrl+C to copy text.
- Position the cursor where you want to paste the text and click in that location to make it active.
- Use Ctrl+V to paste text.

---

### Send a Text File

1. Select Tools > Send Text File. A Send Text File screen appears.

2. Open the directory of the Text file.
3. Click on or enter the file name of the text file.
4. Click Open.



- When you click Open, Raritan Serial Console (RSC) sends whatever file you selected directly to the port.
- If there is currently no target connected, nothing is visible on the screen.

► **Note, if you are using a Mac® and/or Safari®, do the following in order to use this feature:**

1. In Safari, select Preferences.
2. Under the Security tab, select "Manage Website Settings"
3. Click on the SX II website.
4. Select "Run in unsafe mode" from the drop-down box.
5. Restart Safari.

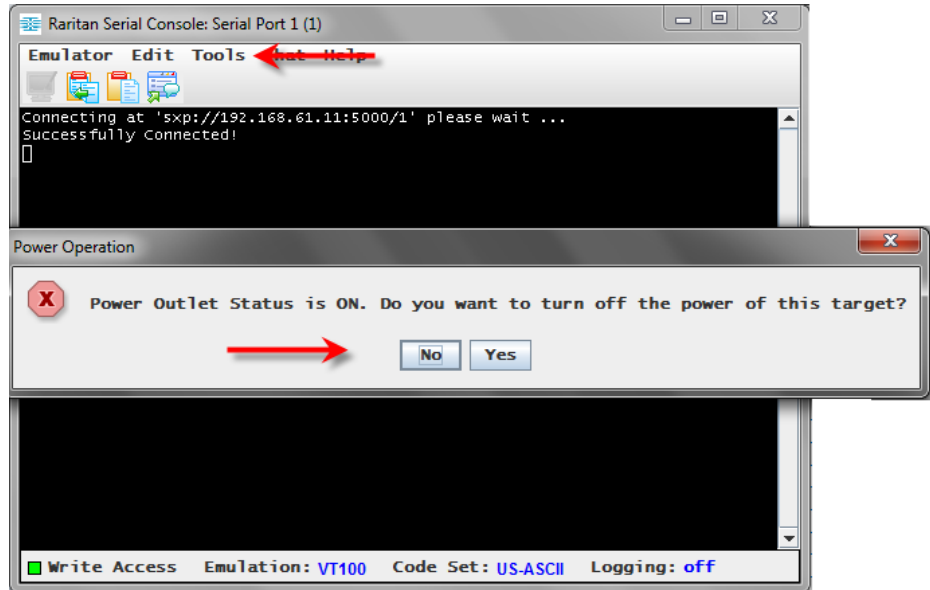
## Toggle Power

The Toggle Power function lets you power on or off the device that is connected to the associated outlet on a Power Distribution Unit (PDU). For example, if a router is connected to one of the outlets on the PDU, you can toggle the router's power on or off.

You must configure the association of outlets to the target port of the device before you can use the Toggle Power feature. Assign a power port to the serial target from the Device Settings > Port Configuration tab of the device. If you have not done this, the system displays a message stating that the target is not associated with a power outlet.

You must have power control permissions to the port to perform these functions.

1. Select Toggle Power to turn the device (router) on or off. A prompt appears displaying the current status of the outlet(s). You can turn the device on or off depending on its current status.
2. If you select No, the system returns you to the RSC screen.
3. If you select Yes, the system sends the power command to either turn on or off the outlets associated to the target port of the device.



If you receive a hardware error message, this means the PDU command failed.

If you receive a software error message, this means another user is controlling the power outlet and the power control command cannot be sent.

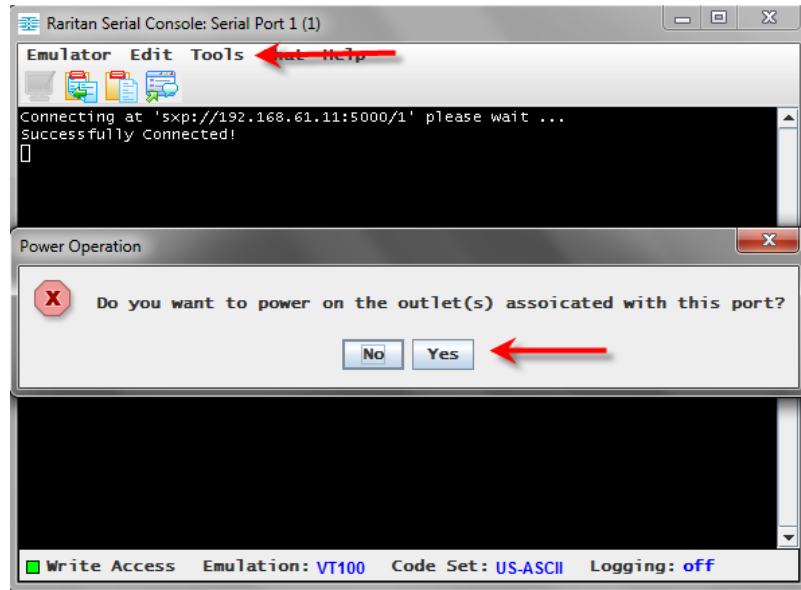
---

### Power On a Target

Use this option to power on a target from Raritan Serial Console (RSC).

This option is visible only when there are one or more power associations to the target, and when you have permission to manage the target's power.

1. Select Tools > Power On.
2. Click Yes when prompted to confirm.



---

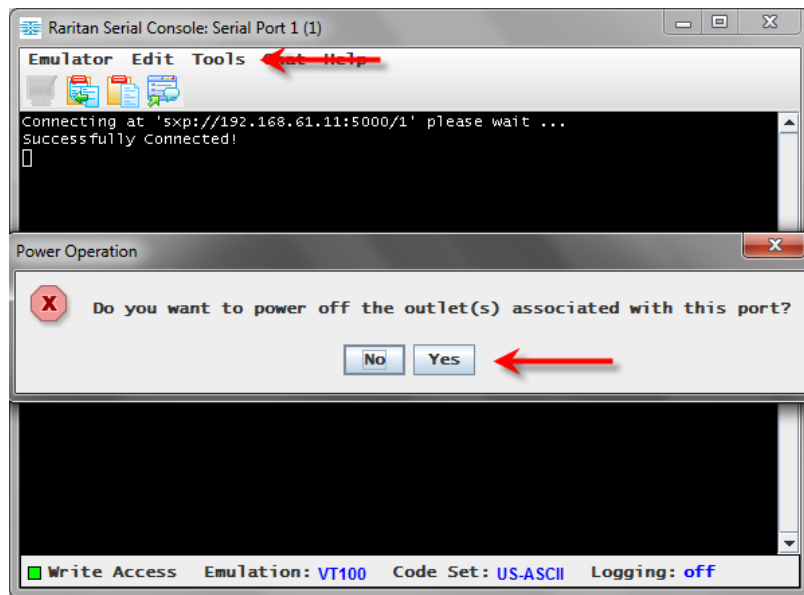
### Power Off a Target

Use this option to power off a target from Raritan Serial Console (RSC).

This option is visible only when there are one or more power associations to the target, and when you have permission to manage the target's power.

1. Select Tools > Power Off.

2. Click Yes when prompted to confirm.



---

### Power Cycle a Target

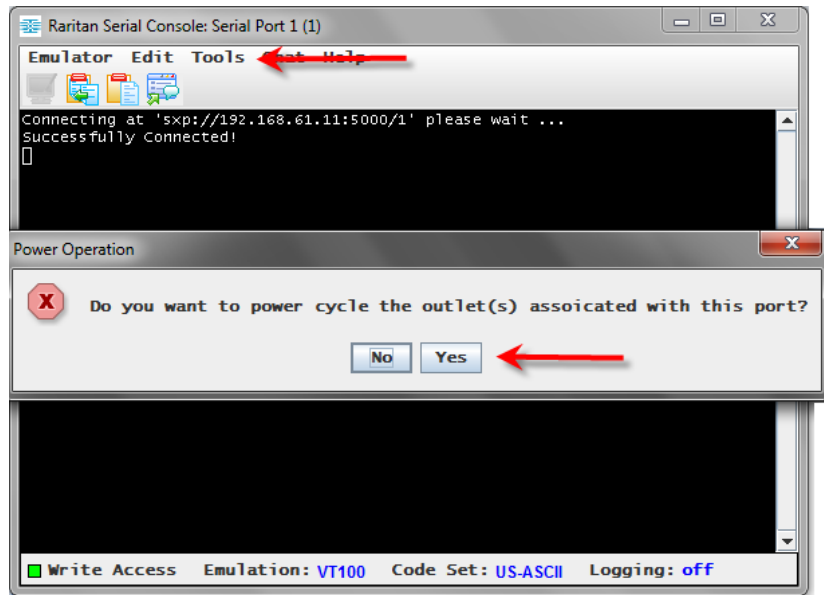
Power cycling allows you to turn a target off and then back on through the outlet it is plugged into.

This option is visible only when -

- there are one or more power associations to the target
- the target is already powered on (the port status us Up)
- you have permission to manage the target's power

1. Select Tools > Power Cycle.

2. Click Yes when prompted to confirm.



---

## Browser Limitations for RSC

Some browsers have limitations that affect RSC.

- Internet Explorer has an internal limitation on the number of websockets that are allowed to be created to a single server (6). This can be changed by modifying a registry variable as shown here : [https://msdn.microsoft.com/en-us/library/ee330736\(v=vs.85\).aspx#websocket\\_maxconn](https://msdn.microsoft.com/en-us/library/ee330736(v=vs.85).aspx#websocket_maxconn).
- Internet Explorer 11, Safari, and Edge have a limitation when connecting to IPv6 devices. Using the numerical URL will not work when it attempts to establish a websocket connection. In these browsers, use the device hostname or literal IPv6 as UNC to connect to the SX II. See [https://en.wikipedia.org/wiki/IPv6\\_address#Literal\\_IPv6\\_addresses\\_in\\_UNC\\_path\\_names](https://en.wikipedia.org/wiki/IPv6_address#Literal_IPv6_addresses_in_UNC_path_names)
- Microsoft Edge Window prohibits triggering a resize manually, so the rescaling option in the RSC Settings menu is locked.

---

## Standalone Raritan Serial Console Requirements

The following requirements must be met to support the Raritan Serial Console (RSC):

- Minimum 1 GHz PC with 512 MB RAM.
- Java™

See SX II release notes for the required version.



If you do not have a compatible version of the JRE, go to <http://www.java.com> (<http://www.java.com>) and click the Download Now button.

Your system may require configuration adjustments depending on the operating system and browser. The JRE provides configuration instructions with the JRE download. See <http://www.java.com/en/download/help/testvm.xml> (<http://www.java.com/en/download/help/testvm.xml> | <http://www.java.com/en/download/help/testvm.xml>) to determine the JRE version currently installed on your system.

Ensure that Java can be started from the command line.

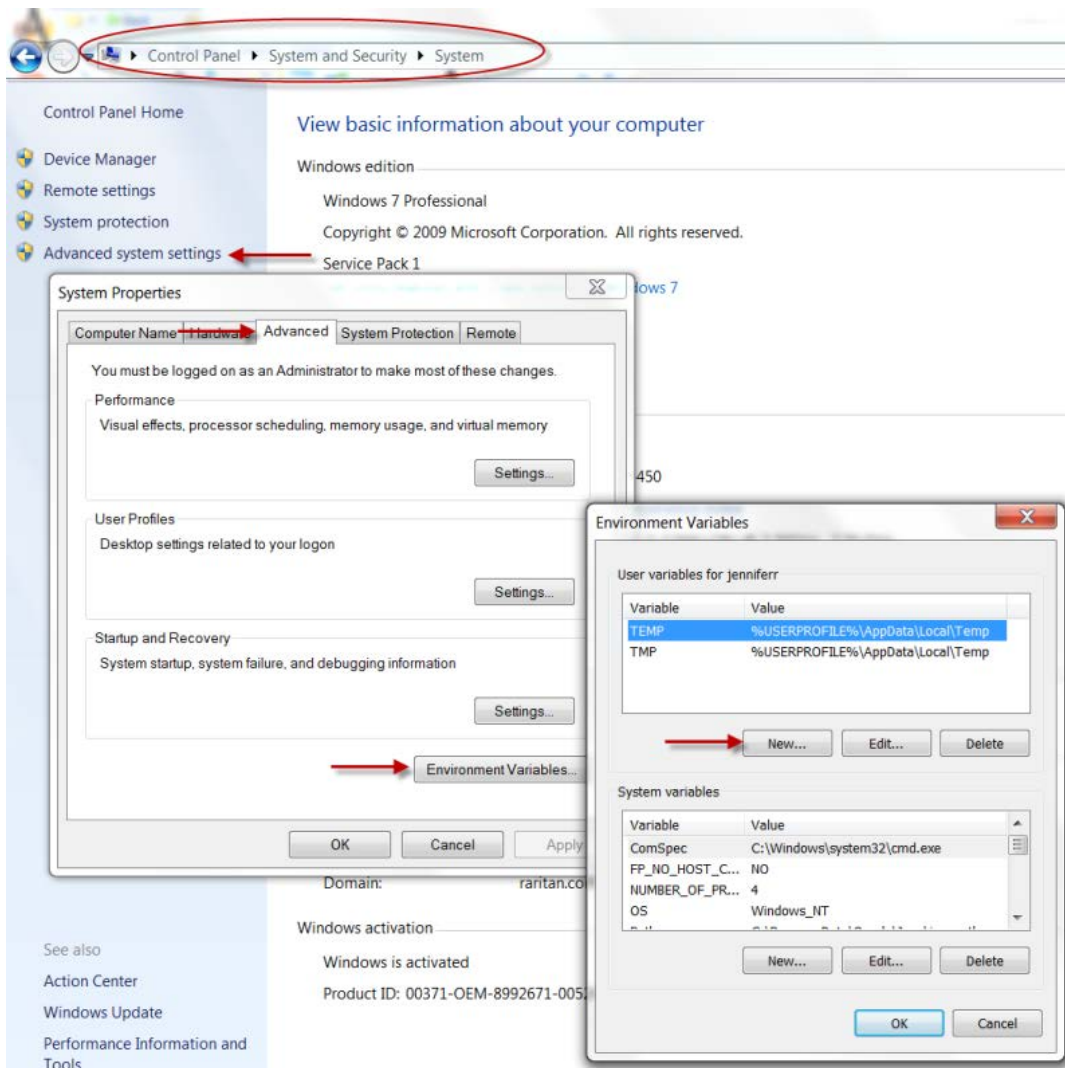
To do this, you must configure environment variables. Make a note of the exact path where Java was installed (the path information is used later).

---

### **Set Windows OS Variables and Install Standalone Raritan Serial Console (RSC)**

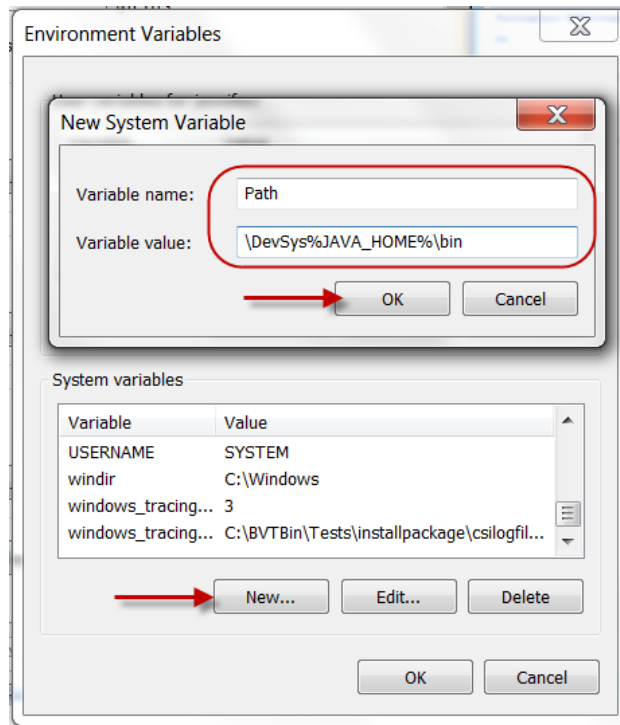
1. Choose Start > Control Panel > System.
2. Click the Advanced tab and then click Environment Variables.

3. In the System variables section, click New.



4. Write down the installed Java path.
5. In the Variable value block field of the New System Variable dialog, add JAVA\_HOME to the Variable name block and the Java path you wrote down earlier.
6. Click OK.
7. Select the PATH variable and click Edit.
8. Add %JAVA\_HOME%\bin to the end of the current Variable value. Ensure a semicolon (;) separates the new value from the last value in the string.

- Click OK.



- Select the CLASSPATH variable and click Edit.
- Ensure the CLASSPATH Variable value is configured properly; that is, its value must have a period (.) in it. If, for any reason, there is no CLASSPATH variable defined, create one.

Next, install Raritan Serial Console (RSC) on your Windows OS.

You must have administrative privileges to install RSC.

- Log in to a Windows® machine.
- Download, or copy from a known location, the RSC-installer.jar installation file.
- Double-click on the executable file to start the installer program. The splash page opens.
- Click Next. The installation path page opens.
- Change the path, if desired.
- Click Next. The installation progress page opens.

---

*Note: The standalone version of RSC is available from the Raritan Support website:*

**[http://www.raritan.com/support/sup\\_upgrades.aspx](http://www.raritan.com/support/sup_upgrades.aspx)**  
**[http://www.raritan.com/support/sup\\_upgrades.aspx/](http://www.raritan.com/support/sup_upgrades.aspx/)**

---

- Click Next. The Windows shortcut page opens.

8. Select the Program Group for the Shortcut.
9. Click Next. The installation finished page opens.
10. Click Done.

---

### Set Linux OS Variables and Install Standalone Raritan Serial Console (RSC) for Linux

To set Java™ for a specific user, open and edit the .profile file located in the /home/Username folder.

To set Java for all users, open the .profile file in your /etc folder:

1. Find the line where you set your path:

```
export
PATH=$PATH:/home/username/somefolder
```

2. Before that line you must set your JAVA\_HOME and then modify your PATH to include it by adding the following lines:

```
export
JAVA_HOME=/home/username/j2sdk1.6/
export PATH=$PATH:$JAVA_HOME/bin
```

3. Save the file.

You must have administrative privileges to install Raritan Serial Console (RSC).

1. Log in to your Linux™ machine.
2. Download, or copy from a known location, the RSC-installer.jar installation file.
3. Open a terminal window and change to the directory where the installer is saved.
4. Type `java -jar RSC-installer.jar` and press Enter to run the installer.
5. Click Next after the initial page loads. The Set Installation Path page opens.
  - a. Select the directory where you want to install RSC and click Next.
  - b. Click Browse to navigate to a non-default directory.
  - c. Click Next when the installation is complete.
  - d. Click Next again. The installation is complete. The final page indicates where you can find an uninstaller program and provides the option to generate an automatic installation script.
6. Click Done to close the Installation dialog.

---

## Setting UNIX OS Variables

To check the latest JRE™ version on Sun Solaris™:

1. Launch a terminal window on the Sun Solaris desktop.
2. Type `java-version` in the command line and press Enter. The currently-installed version of Java™ Runtime Environment (JRE) appears.
  - If your path variable is not set to where the Java binaries have been installed, you may not be able to see the JRE version.
  - Assuming JRE is installed in `/usr/local/java`: you must set your PATH variable.
  - To set a path for the bash shell:

```
export
PATH=$PATH:/usr/local/java/j2re1.6/bin
```

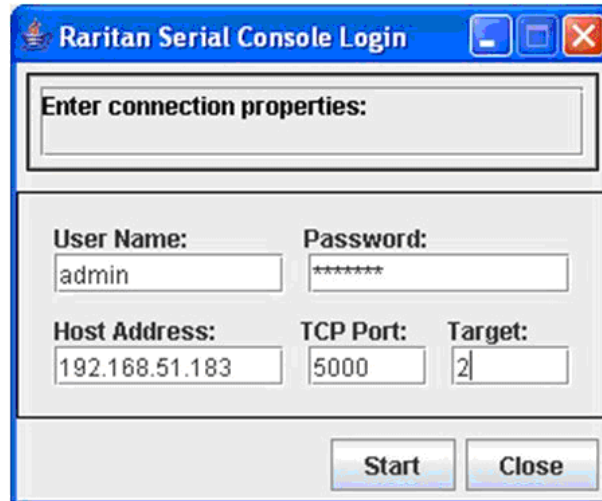
- To set path for tcsh or csh:

```
set
PATH = ($PATH /usr/local/java/j2re1.6/bin)
```
  - These commands can either be typed at the terminal each time you log in, or add them to your `.bashrc` for bash shell or `.cshrc` for csh and tcsh so that each time you log in, the path is already set. See your shell documentation if you encounter problems.
3. If the JRE is installed, proceed with the RSC installation; download JRE if it is not, and then install RSC.

---

### Launching RSC on Windows Systems

1. Double-click the shortcut or use Start Programs to launch the standalone Raritan Serial Console (RSC). The RSC Login connection properties dialog appears.



2. Enter the Dominion SX II IP address, account information, and the desired target (port).
3. Click Start. RSC opens with a connection to the port.

---

*Note: In case of unrecognized characters or blurry screens in RSC window due to localization support, try changing the font to Courier New. Choose Emulator > Settings > Display, and select Courier New for Terminal Font Properties or GUI Font Properties.*

---

# Chapter 7 Connect a Rack PDU to SX II and Configure Power Control Options

SX II provides the following options when connecting a PX2 to a SX II:

- Connect SX II to the PX2 Serial port.  
In this configuration, access to the PX2 is done through the PX2 command line interface (CLI).
- Connect the SX II to the Feature port on the PX2.  
In this configuration, the PX2 is managed from the SX II interface like any other power strip.

See the **PX2 Help** for information on using the PX2 appliance.

## In This Chapter

Connecting the SX II to the PX2 Serial Port .....	73
Connecting the SX II to the PX2 FEATURE Port .....	74

---

## Connecting the SX II to the PX2 Serial Port

In this configuration, after the PX is connected to the SX II, *access the PX using the PX CLI.*

Note that the appliances used in the diagram may not match your specific models. However, the connections and ports used are the same across models.

### ► To connect the SX II to the PX:

1. Connect an ASCSDB9F adapter to the PX2 DB9 console/modem port.

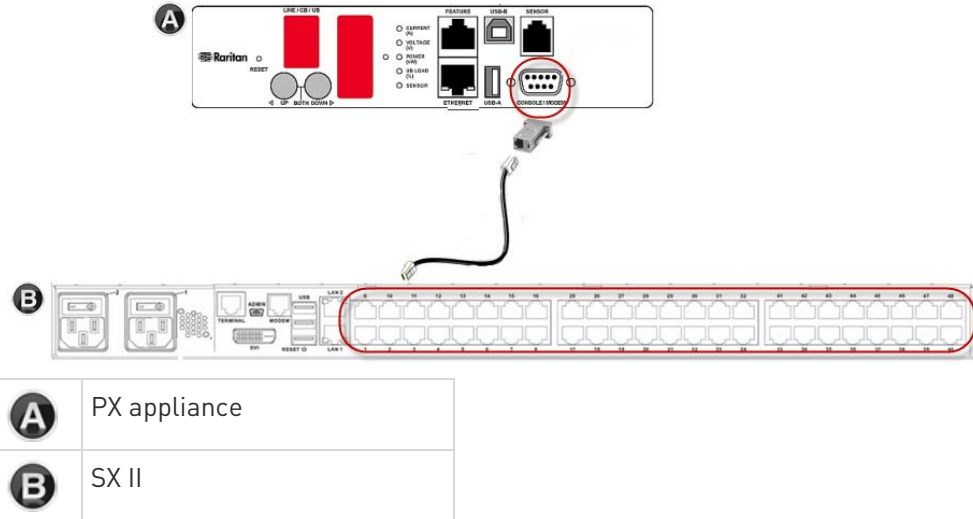
---

*Note: The adapter is purchased from Raritan. It does not come with PX or SX II appliances.*

---

2. Plug a Cat5 cable into the ASCSDB9F adapter, then plug the other end of the cable in to the  port on the SX II.

3. Power on the PX2 (if it is not already). The command line interface (CLI) interface appears.



## Connecting the SX II to the PX2 FEATURE Port

In this configuration, the PX is managed from the SX II interface like any other powerstrip. See Power Control.

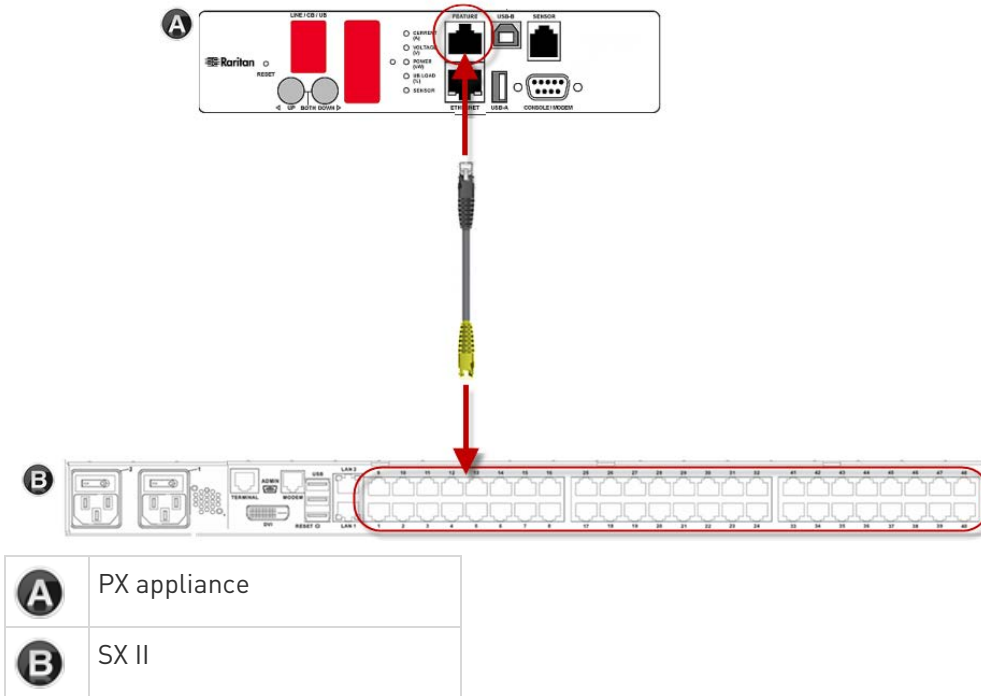
Note that the appliances used in the diagram may not match your specific models. However, the connections and ports used are the same across models.

► **To connect the SX II to the Feature port on the PX:**

1. Connect the gray end of the CSCSPCS crossover Cat5 cable into the Feature port on the PX.
2. Connect the yellow end of the CSCSPCS crossover Cat5 cable into a port on the SX II.
3. Power on the PX (if it is not already).



You can now add the PX as a managed power strip to the SX II. See [Configure Power Strips from the Remote Console](#) or [Configure Power Strips Using CLI](#).



# Appendix A Specifications

## In This Chapter

SX II Dimensions and Physical Specifications .....	76
Supported Remote Connections .....	76
Supported Number of Ports and Remote Users per SX II Model.....	77
Maximum Number of Users Session .....	77
Maximum Number of Support Users Per Port .....	77
Port Access Protocol Requirements.....	78
SX II Port Pins.....	80
Port Ranges .....	81
Network Speed Settings.....	81
Default User Session Timeouts .....	83
SX II Supported Local Port DVI Resolutions .....	83
SX II Appliance LED Status Indicators .....	83
Target Cable Connection Distances and Rates .....	84

---

## SX II Dimensions and Physical Specifications

<b>Form factor</b>	1U, rack mountable
<b>Dimensions</b>	17.3" W x 13.15" D x 1.73'H '; (440mm x 334mm x 44mm)
<b>Weight</b>	9.08 lbs; (4.12 kg)
<b>Power</b>	100/240VAC auto-switching: 50-60 Hz, .35A, 36-72VDC auto-switching
<b>Max power consumption</b>	4-Port SX: 21W   8-port SX: 21W   16-port SX: 22W   32-port SX: 23W   48-port SX: 25W
<b>Temperatures</b>	Operating: 0°C – 50°C. Non-Operating: 0°C – 55°C
<b>Humidity</b>	Operating: 20% – 85%. Non-Operating: 10% – 90%
<b>Altitude</b>	Operates properly at any altitude from 0 to 2,000 meters

---

## Supported Remote Connections

Network

- 10BASE-T
- 100BASE-T
- 1000BASE-T (Gigabit) Ethernet

Protocols

- TCP/IP
- HTTP
- HTTPS
- RADIUS
- LDAP/LDAPS
- SSH
- Telnet
- TACACS+
- UDP
- SNTP

---

### Supported Number of Ports and Remote Users per SX II Model

Model	Number of ports
SX2-04 and SX2-04M	4
SX2-08 and SX2-08M	8
SX2-16 and SX2-16M	16
SX2-32 and SX2-32M	32
SX2-48 and SX2-48M	48

---

### Maximum Number of Users Session

A maximum of 200 users can access a single SX II at the same time.

This applies to the Remote Console access, Direct Port Access and command line interface access via SSH/Telnet.

---

### Maximum Number of Support Users Per Port

A maximum of 10 users can access the same port and the same time.

This applies to the Remote Console access, Direct Port Access and command line interface access via SSH/Telnet.

## Port Access Protocol Requirements

Protocol	Port	Communication direction
HTTP	<p>Ports 80, 443 and 5000 must be open in the firewall for the appliance to operate.</p> <p><b>Port 80</b> This port can be configured as needed. See HTTP and HTTPS Port Settings. By default, all requests received by the SX II via HTTP (port 80) are automatically forwarded to HTTPS for complete security. The SX II responds to Port 80 for user convenience, relieving users from having to explicitly type in the URL field to access the SX II, while still preserving complete security.</p> <p><b>Port 443</b> This port can be configured as needed. See HTTP and HTTPS Port Settings. By default, this port is used for multiple purposes, including the web server for the HTML client, the download of client software onto the client's host, and the transfer of data streams to the client.</p> <p><b>Port 5000</b> This port is used to discover other Dominion devices and for communication between Raritan devices and systems, including CC-SG for devices that CC-SG management is available. By default, this is set to Port 5000, but you may configure it to use any TCP port not currently in use. For details on how to configure this setting, see Network Settings.</p>	Both
HTTPS SSL only	<p><b>Port 443</b> TCP port 443 must be open. Port 80 can be closed.</p>	Both
SSH	<p><b>Port 22</b> TCP port 22 must be open. Port 22 is used for the SX II command line interface (CLI).</p>	Both
Telnet	<p><b>Port 23</b> TCP port 23 must be open.</p>	Both

Protocol	Port	Communication direction
TACACS+	<b>Port 49</b> Port 49 must be open.	Outgoing
RADIUS	<b>Port 1812</b> If SX II is configured to remotely authenticate user logins via the RADIUS protocol, port 1812 is used and must be open. However, but the system can also be configured to use any port of your designation. <b>Optional</b> <b>Port 1813</b> If the SX II is configured to remotely authenticate user logins via the RADIUS protocol, and it also employs RADIUS accounting for event logging, port 1813 or an additional port of your designation is used to transfer log notifications.	Outgoing
LDAP	<b>Ports 389 and 636</b> Port 389 or 636 must be open. If the SX II is configured to remotely authenticate user logins via the LDAP/LDAPS protocol, ports 389 or 636 will be used, but the system can also be configured to use any port of your designation. <b>Optional</b>	Outgoing
SNMP	<b>Ports 161 and 162</b> Port 161 is used for inbound/outbound read/write SNMP access. Port 162 must be open. Port 162 is used for outbound traffic for SNMP traps.	Both (Port 161) Outgoing (Port 162)
For FTP upgrades	<b>Port 21</b> Port 21 must be open.	Outgoing
SYSLOG on Configurable UDP Port	<b>Port 514</b> UDP port 514 must be open. If SX II is configured to send messages to a Syslog server, UDP Port 514 is used for communication.	Outgoing
SNTP (Time Server) on Configurable UDP	<b>Port 123</b> The SX II offers the optional capability to synchronize its internal clock to a central time server. This function requires the use of UDP Port 123 (the standard for SNTP), but can also be configured to use any port of your designation. <b>Optional</b>	Both

You may have to open additional ports when NFS logging, using LDAP servers, and so forth.

These ports may vary from installation-to-installation depending on network topologies, virtual Local Area Networks (VLANs), and firewall configurations.

Contact your network administrator for site-specific information and settings.

---

## SX II Port Pins

Local Terminal Port		
pin	Definition	Direction
pin 1	RTS	Output
pin 2	N/A	
pin 3	TXD	Output
pin 4	Ground	
pin 5	Ground	
pin 6	RXD	Input
pin 7	N/A	
pin 8	CTS	Input

DTE Mode on Server Port		
pin	Definition	Direction
pin 1	RTS	Output
pin 2	DTR	Output
pin 3	TXD	Output
pin 4	Ground	
pin 5	Ground	
pin 6	RXD	Input
pin 7	DSR	Input
pin 8	CTS	Input

DCE Mode on Server Port		
pin	Definition	Direction
pin 1	CTS	Input
pin 2	DSR	Input
pin 3	RXD	Input
pin 4	Ground	
pin 5	Ground	
pin 6	TXD	Output
pin 7	DTR	Output
pin 8	RTS	Output

### Port Ranges

The port range for internal port configuration - CSC, HTTP, HTTPS, SSH, Telnet, DPA SSH , DPA Telnet - is 1 to 64510. The configurable port range for socket creation is limited to 1024 to 64510.

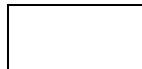
External port configuration - LDAP, RADIUS, TACACS+ and SNMP - is not affected by a port range limitation.

### Network Speed Settings


SX II network speed setting						
Network switch port setting	Auto	1000/Full	100/Full	100/Half	10/Full	10/Half
Auto	Highest Available Speed	1000/Full	SX II: 100/Full Switch: 100/Half	100/Half	SX II: 10/Full Switch: 10/Half	10/Half
1000/Full	1000/Full	1000/Full	No Communication	No Communication	No Communication	No Communication
100/Full	SX II: 100/Half Switch: 100/Full	SX II: 100/Half Switch: 100/Full	100/Full	SX II: 100/Half Switch: 100/Full	No Communication	No Communication


SX II network speed setting						
100/Half	100/Half	100/Half	SX II: 100/Full Switch: 100/Half	100/Half	No Communica tion	No Communica tion
10/Full	SX II: 10/Half Switch: 10/Full	No Communica tion	No Communica tion	No Communica tion	10/Full	SX II: 10/Half Switch: 10/Full
10/Half	10/Half	No Communica tion	No Communica tion	No Communica tion	SX II: 10/Full Switch: 10/Half	10/Half

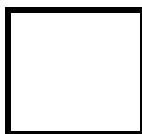
Legend:

 Does not function as expected

 Supported

 Functions; not recommended

 NOT supported by Ethernet specification; product will communicate, but collisions will occur

 Per Ethernet specification, these should be “no communication,” however, note that the SX II behavior deviates from expected behavior

---

*Note: For reliable network communication, configure the SX II and the LAN switch to the same LAN Interface Speed and Duplex. For example, configure the SX II and LAN Switch to Autodetect (recommended), or set both to a fixed speed/duplex such as 100MB/s/Full.*

---



---

## Default User Session Timeouts

- SX II interface - 5 minutes (to change this, select Security > Settings and update the "Idle Timeout (minutes)" field)
- SSH - 16 minutes
- Telnet - 2 hours

---

## SX II Supported Local Port DVI Resolutions

Following are the resolutions supported when connecting to a DVI monitor from the SX II local port.

- 1920x1080@60Hz
- 1280x720@60Hz
- 1024x768@60Hz (default)
- 1024x768@75Hz
- 1280x1024@60Hz
- 1280x1024@75Hz
- 1600x1200@60Hz
- 800x480@60Hz
- 1280x768@60Hz
- 1366x768@60Hz
- 1360x768@60Hz
- 1680x1050@60Hz
- 1440x900@60Hz

---

## SX II Appliance LED Status Indicators

LEDs are used to indicate power status, appliance status and target connection status.

**There are LEDs located on the front panel and rear panel of the SX II.**

### Front Panel LED Status Indicators

- When SX II boots up, only the Power LED turns on. The power LED turns both red and blue.
- Port Channel LEDs are off the whole time SX II boots up.
- Once SX II is fully powered on, the Power LED remains on.
  - If a single power supply is plugged in, the Power LED is **Red**.
  - If both power supplies are plugged in, the Power LED is **Blue**.

- When you physically connect a powered-on target to a port on SX II via a CAT5 cable, the Port channel's LED turns on.  
The LED remains on until the target is disconnected.

---

*Note: The target must be powered on in order for the SX II Port channel LED to turn on and the SX II to detect the target.*

---

- When you physically disconnect a target from a port on an SX II, the port channel's LED turns off.
- When you log in to SX II and connect to a target via either Raritan Serial Console (RSC), SSH or the Local Console, the port channel's LED blinks.  
The LED blinks until you end your connection to the target.  
If you are connected to more than one target at the same time, all LEDs blink in unison.
- When you press the SX II's Reset button to reset the appliance or when you perform a reboot from the SX II GUI, the Power LED(s) blinks as the appliance powers down and turns off.  
While the appliance powers back up, the Power LED(s) continue to blink.  
Once the appliance is powered on, the Power LED(s) stop blinking and the LED remains on.

---

## Target Cable Connection Distances and Rates

SX II supports the following connection distances using a CAT5 cable between its Serial port and a target.

Distance	Bits per second
300ft/91m	1,200
300ft/91m	1,800
300ft/91m	2,400
200ft/60m	4,800
100ft/30m	9,600
50ft/15m	19,200
25ft/7.5m	38,400
16ft/5m	57,600
8ft/2.5m	115,200
4ft/1.2m	230,400



# Appendix B FAQs

## Dominion SX II Overview

## Dominion SX II Overview

### What is the Dominion SX II?

The Dominion SX II is Raritan's next-generation Serial Console Server that provides IP access and control of serial devices, anytime, anywhere. The new SX II is the most powerful, secure, reliable, easy-to-use and manageable serial-over-IP console server on the market. SX II provides convenient and productive access to networking devices, servers, PDUs, telecommunications and other serial devices.

### How is SX II different from the current SX?

The SX II is the next-generation version of the current SX. SX II has an entirely new hardware and software design that is substantially more powerful and capable than the current SX. The SX II provides virtually all of the features of the SX, plus exciting new capabilities. Unlike the current SX, all SX models come with dual power supplies, dual LAN connections and multiple local connection options. The SX II comes in 4, 8, 16, 32 and 48 models, available with and without an internal telephone modem. Many of the management features are the same as those on the Dominion KX III.

### What are the SX II's new features?

New features include: Gigabit Ethernet, IPv6 networking, direct connection to Cisco devices with no rollover cables, FIPS 140-2 encryption, automatic configuration via USB stick or TFTP, 3G/4G cellular modem support, up to 8 gigabytes of flash space, multiple at the rack access options and Dominion compatible user interfaces and management.

### Does the SX II have all of the current SX's features?

Virtually all of the current SX's features are included in the SX II. Several features (firmware update, fixed user groups) have been replaced by more powerful Dominion style features and a few infrequently used features have been removed.

### What is the pricing for SX II?

While you might expect a significant price increase for the SX II, it is priced similarly to the current SX. The exact price difference varies model by model. Some SX II models are even less expensive than the current SX models!

## Dominion SX II Overview

### What are the end-of-life plans (lifecycle) for the current SX?

The Dominion SX II will replace the current Dominion SX. In the 4th quarter of 2015, Raritan will announce the end-of-sales for the current SX models, with opportunities for last-time-buys for a few months. Raritan will continue software support for the current SX for two years from the end-of-sales announcement date; after that there will be no more firmware releases for the current SX. CommandCenter support will likely continue past the end-of-support date. Existing hardware warranties will be honored.

### Is there a trade-in program for the SX II?

Yes, you will have the opportunity to trade in the current SX and/or competitor serial console servers.

## Dominion SX II Hardware Platform

**What are some of the hardware improvements?**

There are many: more powerful CPU, memory and flash space, dual power supplies (AC & DC), dual gigabit LAN ports, port status LED's, 4 USB ports, autosensing DTE/DCE ports, USB laptop access, DVI/USB access, and modem option for all models.

**How does the SX II's performance compared to the current SX?**

The SX II hardware platform is substantially more powerful with a 1GHz CPU, an 8-fold increase RAM, and up to 8 Gb of flash space. SX II supports up to 10 sessions per port and up to 200 total serial sessions. Port configuration is 15 to 23 times faster, with order of magnitude improvements in simultaneous connections, connection speed and serial processing.

**What type of network connections does the SX II have?**

The SX II has two Gigabit Ethernet LAN ports that are auto-sensing to support 10/100/1000 Megabit connections. These LAN ports can be configured for (1) single LAN connection, or (2) dual LAN connections; the latter with (a) failover or (b) simultaneous operation. Both IPv4 and IPv6 are supported.

**Are all SX II models 1U? Even the 48 port model?**

Yes, all models are 1U and include a rackmount kit. Like, the current SX, the 48 port model has 48 ports on the back panel; to make room for this, the dual power outlets are on the front panel.

**How much flash space is available for logs?**

More than you could ever possibly use!! Four and eight port SX II's have 2 Gigabits of flash space. The other models have 8 Gigabits of flash space.

**Does the SX II support remote power control?**

Yes, the SX II supports remote power control for serial devices via connection to Raritan PX intelligent rack PDU's.

**What is the pin definition for the SX II's local admin port?**

The SX II local admin port is an RJ-45 port with the following DTE pinout (Pin/ Signal): 1/RTS, 3/TXD, 4/GND, 5/GND, 6/RXD, 8/CTS. You can connect to a DB9 port on a laptop using the Raritan ASCSDB9F RJ-45(female) to DB9 (female) adapter with a Cat5 cable.

**Does Dominion SX include a 19" rack mount kit?**

Yes. Dominion SX II comes standard with a complete ready-to-install 19" rack mount kit.

## Serial-over-IP Sessions and Access



## Serial-over-IP Sessions and Access

### What types of serial access are available?

The SX II has the widest variety of serial access. This includes: SSH, Telnet and web browser serial connections. Web browser access is available via the Raritan Serial Client and through Raritan CommandCenter. Convenient Direct Port Access (DPA) methods are available. At-the-rack access is available via serial cable, USB and via a KVM console. Emergency modem access is available via optional internal modem or external 3G/4G cellular modem.

### What is Direct Port Access ?

Direct Port Access provides direct and convenient access to a specific serial device connected to the SX II. Multiple Direct Port Access (DPA) methods are available via SSH, Telnet and HTTP/URL.

### Does the SX II support TELNET?

TELNET is supported, but is disabled by default for security reasons as TELNET does not support encrypted sessions. We recommend that SSH is used instead of TELNET.

### What about emergency access via modem?

There are two types of modem access supported. First, an internal telephone modem is optional for each SX II model (DSX2-...M models). Second, for 3G/4G cellular modem access, you can connect one of the supported Sierra Wireless modems to the SX II's USB port and access the SX II via the modem's IP address.

### How can I secure the Sierra Wireless modem?

You can use the SX II's Firewall feature to create Linux-style "iptables" rules to secure the connection to the wireless modem. In addition the modem itself has a firewall capability.

### How can I access the SX II when I am in the data center?

The Dominion SX II provides multiple types of at-the-rack access. To connect to a laptop or PC you can connect to its RJ45 serial port or USB mini-B port. You can connect a crash cart or rackmount keyboard tray to the SX II's DVI and USB KVM ports. To access the SX II's web-based user interface, connect a crossover Ethernet cable to the SX II's LAN port.

## Serial-over-IP Sessions and Access

**How can I get consolidated access to the local ports of multiple SX II's?**

There are two ways to do this. First you can connect the serial admin ports of multiple SX II's to another SX II with straight Cat5 cables. Second you can connect the DVI/USB local ports of the SX II's to a KVM switch like the Dominion KX III. This can give you access to multiple SX II's in and around the data center.

**What baud rates are supported?**

Multiple baud rates are supported: 1200, 1800, 2400, 4800, 9600 (default), 19200, 38400, 57600, 115200, and 230400 bits per second. Can set this on a per port basis from the Port Configuration page or CLI.

**What code-sets does the terminal emulator in Dominion SX II support?**

Dominion SX release 3.0 or higher supports VT100/VT220/VT320 and ANSI with the following code-sets: default, US-ASCII, ISO-8859-1, ISO-8859-15, UTF-8, Shift-JIS, EUC-JP, EUC-CN, and EUC-KR.

**How many serial devices can be simultaneously accessed through a given SX II?**

A group of users can simultaneously access all the serial devices connected to a SX II. For example, with a 48 port SX II, users can simultaneously connect to and access all 48 serial devices connected to it!

**How many users can simultaneously access a single serial device connected to a SX II**

Up to ten users can access a single serial device at the same time, up to a limit of two hundred simultaneous accesses per SX II. For example, on a 32 port SX II, six users could each simultaneous access each of the 32 serial devices connected to it for a total of 192 user sessions. This would not be a typical user scenario, but illustrates the powerful serial processing capacity of the SX II.

**Is the Dominion SX unit SUN® "break-safe"**

All Dominion SX units are SUN "break-safe" for use with SUN Solaris.

## Connecting to Serial Devices

## Connecting to Serial Devices

### What type of devices can the SX II connect to?

The SX II can connect to a wide variety of serial devices including network routers, Ethernet switches, firewalls, UNIX/LINUX servers, Windows Servers, virtual hosts, rack PDU's, UPS systems and telecom/wireless gear. The SX II connects via Cat5 cable to these device's RJ-45, DB9 or DB25 serial console ports.

### Are rollover cables required?

No. SX II serial connections are auto-sensing, so that they can connect to both DTE (data terminal equipment) and DCE (data communications equipment) console ports without rollover cables. The SX II can connect to Cisco and other compatible devices with RJ-45 console ports without rollover cables.

### What is DTE/DCE and why is it important?

An RS-232 serial port is either DTE or DCE. DTE ports are typically used on a computer or terminal, i.e. male DB9 COM port. And DCE is used on a modem, CSU/DSU, multiplexer or peripheral. A DTE port is typically cabled to a DCE port. Connections between like ports must be connected by a specific rollover cable. Since SX II is auto-sensing, it can connect to either DTE or DCE ports.

### Are adapters required?

To connect to RJ45 console ports, a regular Cat5 cable can be used with no adapter. Raritan also sells male and female DB9 and DB25 adapters for devices with these types of serial ports. Adapters are also available to connect to Raritan PX intelligent Rack PDU's.

### What is the maximum distance from the SX II to a serial device?

The distance varies according to the baud rate that is used. This can range from 4 feet for 230K baud to over 300 feet for 2.4K baud.

### What are some sample connections to serial devices?

The below table shows how to connect the SX II to standard networking and computer equipment. This is based on the type of serial port (RJ45, DB9 & DB25) and its gender (male or female). The required Raritan adapter is shown.

Vendor	Models	Serial Port	How to Connect
Cisco	Catalyst	RJ45	Cat5 cable
Cisco	Catalyst	DB25F	ASCSD25M adapter and CAT5 cable
Cisco	Router	RJ45	Cat5 cable
Cisco	Router	DB25F	ASCSD25M adapter and CAT5 cable
Cisco	UCS	RJ45	Cat5 cable
Cisco	PIX Firewall	DB9M	ASCSD9F adapter and CAT5 cable
HP	Servers	DB9M	ASCSD9F adapter and CAT5 cable
Dell	Servers	DB9M	ASCSD9F adapter and CAT5 cable
IBM	Servers	RJ45	Cat5 cable
Checkpoint	Firewall	DB9M	ASCSD9F adapter and CAT5 cable
Silicon Graphics	Origin	DB9M	ASCSD9F adapter and CAT5 cable
Sun	SPARCStation	DB25F	ASCSD25M adapter and CAT5 cable
Sun	Netra T1	RJ45	Cat5 cable
Sun	Cobalt	DB9M	ASCSD9F adapter and CAT5 cable
Various	Windows	DB9M	ASCSD9F adapter and CAT5 cable
Raritan	PX	RJ45	CSCSPCS-1 or CSCSPCS-10 cable

Installation, Management & Configuration

## Installation, Management & Configuration

**How do I initially configure the SX II?**

Initial configuration can be done manually from the SX II local console or automatically via USB stick or TFTP server. Manual configuration can be done via CLI by connecting your laptop via (1) USB, (2) serial cable, or (3) by connecting a KVM console. You can also (4) use the web GUI connecting a laptop via a crossover cable. A Quick Setup Guide (QSG) is included.

**Can the SX II be completely managed by CLI? Where is the CLI defined?**

Yes, the SX II can be completely managed via CLI commands. The CLI is defined in the on-line help, user guide and available from the CLI itself.

**Tell me more about the automatic configuration options.**

There are two ways to automatically configure the SX II. First, it can be configured by a script of CLI commands, plugged into a USB port on the SX II. Second, a script of CLI commands can be stored on a TFTP server available via DHCP Server or configured into the SX. For security, both of these automatic configuration methods must be enabled by the administrator.

**Does the SX II require a FTP Server for firmware upgrades like the current SX?**

No, the SX II firmware upgrade process is like that of the KX III. No FTP server is required. The user browses to an encrypted firmware file downloaded from the Raritan website. Many of the management functions are the same as with the KX III. Note that the FTP option still exists via CLI to upgrade the device in this manner.

**Can I copy my current SX configuration to the new SX II?"**

With the extensive software and hardware changes, the configuration backups of the current SX are unfortunately not compatible with the new SX II.

**Where can I get a copy of the SNMP MIB for Dominion SX?**

The SX II SNMP MIB is available from the Dominion SX II Support Page on raritan.com. It is also available from the Event Management - Settings page on the web GUI.

**Does the SX II work with Raritan's Command Center?**

Yes. The Dominion SX II requires CommandCenter Secure Gateway Release 6.1 and above, available in September 2015. Using CommandCenter, users can connect to thousands of serial (and KVM) devices, connected to the Dominion SX, SX II, KX III and other Raritan

**Installation, Management & Configuration**  
devices.

**Security**

## Security

### Is the Dominion SX II secure?

Yes, the Dominion SX II has rock-solid security with military grade security features such as 256 bit AES encryption with a FIPS 140-2 mode and encryption module. The SX II has a long list of security features and each release is tested with a vulnerability scanner. Security patches will be made available from the Raritan website.

### Is the Dominion SX II FIPS 140-2 certified?

The Dominion SX II uses an embedded FIPS 140-2 validated cryptographic module running on a Linux platform per FIPS 140-2 implementation guidelines. This cryptographic module is used for encryption of serial sessions when using the Raritan Serial Client (RSC).

### Is ActiveDirectory authentication supported?

Yes, ActiveDirectory, LDAP, Radius and TACACS authentication are supported. In addition the SX II administrator can create local users with their passwords.

### Which ports need to be open for SX II connections?

Port 443 (for https); optionally port 80 (http) for user sessions. When using SSH, port 22 needs to be open. The TCP ports for HTTP, HTTPS, Telnet, SSH are all user configurable. These user configured ports will need to be open for access. Also, TCP port 5000.

### What type of logging is available?

The SX II supports many types of events generated for user access, security events as well as administrative actions. Multiple logging methods are available including SNMP, Syslog, Email, NFS and internal log file.

### Is the serial port data logged?

Yes, data from the serial devices can be logged to a local file on the SX II, Syslog or NFS server.

### What is the default login and default password?

The default login is "admin" and the default password is "raritan". You are forced to change the password when you first log in to the SX II. We recommend that you also change the default "admin" name for security reasons. Also recommended is strong passwords for your local accounts, which can be enabled on the Security Settings panel.

## Security

**I have lost the Admin password to the Dominion SX. What can I do?**

You can restore the unit to its factory default settings. A factory reset function to restore the unit to factory default settings is provided. This reset function has several configurable options.

## User Interface & Documentation

**What type of web-based user interface does the Dominion SX II have?**

The Dominion SX II Graphical User Interface is similar to the other Dominion products, providing a common look-and-feel across the Dominion SX II, KX, KSX and KX2-101-V2. In addition, similar management features are available including firmware update, backup and restore, security options and diagnostics.

**Does the SX II require Java?**

For web browser access by the Raritan Serial Console software, Java is required. Java is not required for CLI access to the SX II via SSH, Telnet or an at-the-rack connection.

**Where can I get documentation (user guide, etc.) for the Dominion SX II?**

The Data Sheet, available on the SX II Product Page, provides a good overview of the SX showing the available models, adapters and features. The Features and Benefits document, also available on the SX II Product Page, provides a list of the SX II features. The SX II Support Page provides detailed technical information including the Release Notes, User Manual, On-line Help, SX II MIB and firmware releases.



# Appendix C SX II Support

In addition to Raritan Technical Support and Customer Support, the following resources are available.

## In This Chapter

SX II Release Notes and Help.....	99
Contact the Documentation Team with Feedback.....	100

---

## SX II Release Notes and Help

### SX II Release Notes

Release notes come with the SX II appliance and are available on the Support page of *Raritan's website* (<http://www.raritan.com/support/firmware-and-documentation>).

Review the release notes for important information before you begin using the appliance.

### SX II Quick Setup Guide

Online help is accompanied by the **SX II Quick Setup Guide**, which is included with your SX II and can be found on the Support page of *Raritan's website* (<http://www.raritan.com/support/firmware-and-documentation>).

### SX II Online Help

SX II online help is considered your primary help resource.

Raritan Serial Console (RSC) help is provided as part of SX II online help.

To use online help, Active Content must be enabled in your browser.

### SX II Users Guide and Administrators Guide

A PDF version of help topics specific to end users is contained in the SX II User Guide and topics specific to SX II administrators are contained in the SX Administrators Guide.

Both PDFs are available on the Support page of *Raritan's website* (<http://www.raritan.com/support/firmware-and-documentation>).

---

## Contact the Documentation Team with Feedback

Contact the Documentation directly with any questions or feedback related to the online help or user guides .

Email us at **documentation@raritan.com**, or directly from online help by doing one of the following -

▶ **Use the "Send Feedback" feature in online help:**

- Open online help and click the "Send Feedback" icon in the toolbar. An email addressed to the team opens in your default email client.

▶ **Email the Documentation Team a specific topic from the online help:**

- Open to the topic in online help, then click on the "Email this Page" icon in the toolbar in online help.

An email addressed to the team opens in your default email client.

---

*Note: Feedback via this method is for online help content only and not for technical support, sales, website or product information. See the Contact Us page on Raritan's website for additional contact information.*

---

設備名稱： KVM Equipment name		，型號（型式）：DSX2系列(系列型號參見次頁) Type designation (Type)				
單元 Unit	限用物質及其化學符號 Restricted substances and its chemical symbols					
	鉛Lead (Pb)	汞Mercury (Hg)	鎘Cadmium (Cd)	六價鉻 Hexavalent chromium (Cr <sup>+6</sup> )	多溴聯苯 Polybrominated biphenyls (PBB)	多溴二苯醚 Polybrominated diphenyl ethers (PBDE)
電路板	—	○	○	○	○	○
電源供應器	—	○	○	○	○	○
機殼	○	○	○	○	○	○
面板	○	○	○	○	○	○
其他配件	○	○	○	○	○	○
<p>備考1. “超出0.1 wt %” 及 “超出0.01 wt %” 係指限用物質之百分比含量超出百分比含量基準值。</p> <p>Note 1 : “Exceeding 0.1 wt %” and “exceeding 0.01 wt %” indicate that the percentage content of the restricted substance exceeds the reference percentage value of presence condition.</p> <p>備考2. “○” 係指該項限用物質之百分比含量未超出百分比含量基準值。</p> <p>Note 2 : “○” indicates that the percentage content of the restricted substance does not exceed the percentage of reference value of presence.</p> <p>備考3. “—” 係指該項限用物質為排除項目。</p> <p>Note 3 : The “—” indicates that the restricted substance corresponds to the exemption.</p>						

# Index

## A

- Access and Use Remote Console Features • 18
- Access SX II Using an iOS Device • 12, 29
- Access Targets • 34
- Additional Security Warnings • 25, 26
- Allow Pop-Ups • 19

## B

- Browser Limitations for RSC • 66

## C

- Change Your Password from the Remote Console • 30
- Command Line Interface High-Level Commands • 44
- Command Line Interface Partial Searches • 43
- Command Line Interface Protocols • 43
- Command Line Interface Shortcuts • 44
- Command Line Interface Tips • 44
- Configure SX II for the First Time • 13
- Connect a Laptop to SX II Using a Cross-Over Cable (Optional) • 14
- Connect a Rack PDU to SX II and Configure Power Control Options • 73
- Connect to a Target • 35, 36
- Connect to Targets Using CLI - Connect, Disconnect, Power On, Power Off and Power Cycle Targets • 35, 36, 37, 38, 39
- Connecting the SX II to the PX2 FEATURE Port • 74
- Connecting the SX II to the PX2 Serial Port • 73
- Contact the Documentation Team with Feedback • 100
- Converting a Binary Certificate to a Base64-Encoded DER Certificate (Optional) • 23
- Copy and Paste • 50
- CS03 Certification - DSX2-16 and DSX2-48 • vi

## D

- Default Login Information • 13
- Default User Session Timeouts • 83
- Disconnect from a Target • 35, 37

## E

- Edit • 61
- Emulator • 45, 55
- Example 1
  - Import the Certificate into the Browser • 20, 22
- Example 2
  - Add the SX II to Trusted Sites and Import the Certificate • 21

## F

- FAQs • 86
- Features and Benefits • 1, 10

## H

- HSC Functions • 45
- HTML Serial Console (HSC) Help • 12, 18, 34, 37, 38, 39, 45

## I

- Initial SX II Configuration from the Remote Console • 13
- Initial SX II Configuration Using Command Line Interface (Optional) • 14
- Installing a Certificate • 19, 25
- iOS Support • 12

## J

- Java Validation and Access Warning • 25, 26

## L

- Launching RSC on Windows Systems • 72
- Log In to SX II Admin-Only Interface • 18, 28
- Log In to SX II and HSC • 18, 25
- Log In to SX II and RSC • 25

## M

- Maximum Number of Support Users Per Port • 77
- Maximum Number of Users Session • 77

## N

- Network Speed Settings • 81

## P

- Package Contents • 10
- Port Access Protocol Requirements • 78
- Port Action Menu Options - Connect, Disconnect, Power On, Power Off and Power Cycle Targets • 32, 34, 41
- Port Ranges • 81
- Power Cycle a Target • 35, 39, 53, 65
- Power Off a Target • 35, 38, 53, 64
- Power on a Target • 52
- Power On a Target • 35, 37, 64
- Power Status • 52

## R

- Raritan Serial Console (RSC) Functions • 54
- Raritan Serial Console (RSC) Help • 12, 18, 34, 36, 37, 38, 39, 41, 54

## S

- Security Warnings and Validation Messages • 19, 25
- Send a Text File • 61
- Send Text File • 50
- Set Linux OS Variables and Install Standalone Raritan Serial Console (RSC) for Linux • 70
- Set Terminal Emulation on a Target • 17, 39
- Set the CLI Escape Sequence • 17, 39
- Set Windows OS Variables and Install Standalone Raritan Serial Console (RSC) • 67
- Setting UNIX OS Variables • 71
- Specifications • 76
- Standalone Raritan Serial Console Requirements • 66
- Standalone RSC Client Launching • 27

- Supported Number of Ports and Remote Users per SX II Model • 77
- Supported Remote Connections • 76
- Supported Serial Devices • 11
- SX II Access Clients • 12
- SX II Appliance Diagram • 10
- SX II Appliance LED Status Indicators • 83
- SX II Dimensions and Physical Specifications • 10, 76
- SX II Left Panel • 32
- SX II Models • 10
- SX II Port Access Page • 31, 34
- SX II Port Pins • 80
- SX II Release Notes and Help • 99
- SX II Support • 99
- SX II Supported Local Port DVI Resolutions • 83

## T

- Target Cable Connection Distances and Rates • 84
- Toggle Power • 63