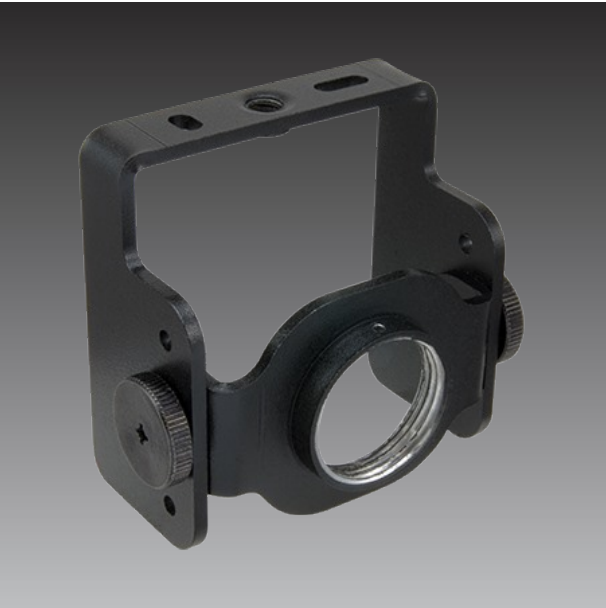


PMAX-1108




Bracket for all Covert Cameras (except L-Shape Pinhole)

► Specifications

Device	
Product Type	Camera Mount
Application Environment	Indoor
Description	Bracket for all Covert Cameras (except L-Shape Pinhole)
General	
Weight	107.5g (0.237lb)
Color	Black
Material	Aluminum
Warranty	1 Year(s)

► Related Products

Covert - Covert	
Q12	 2MP Indoor Covert with Basic WDR, SLLS, Fixed lens, f2.55mm/F2.2 (HOV:110.3°), H.264, 1080p/30fps, 2D+3D DNR, Audio, MicroSDHC/MicroSDXC, PoE/DC12V, EN50155, DI/DO, RS-232



Covert - Pinhole Covert

Q112



5MP Indoor Pinhole Covert with Basic WDR, Fixed lens, f3.7mm/F2.5 (HOV:70.2°), H.264, 1080p/30fps, DNR, Audio, MicroSDHC/MicroSDXC, PoE/DC12V, EN50155, DI/DO, RS-232