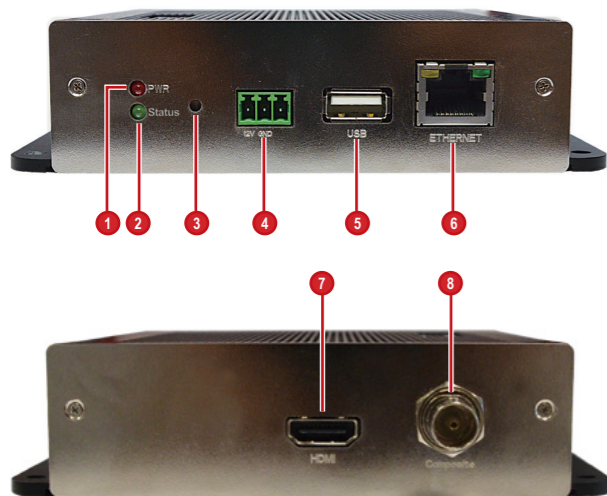


Device Overview



1	Power LED	5	USB Port
2	System Ready LED	6	Ethernet Port
3	Reset Button / NTSC and PAL Switch	7	HDMI Port
4	DC 12V Power Connector	8	Composite Port

Before You Start

This guide contains all the information you need to quickly setup the Video Decoder via local display interface. For detailed information on installations or operations, please refer to the Hardware Manual or User's Manual on the ACTi website (www.acti.com).

Before installation, prepare the following equipment:

1. Monitor (HDMI or Composite input)
2. HDMI cable or video cable with BNC connector
3. RJ-45 network cable
4. Network switch
5. USB mouse
6. USB keyboard (optional)
7. Screwdriver

Step 1: Unpack the Device

Check if the package comes with the following items:

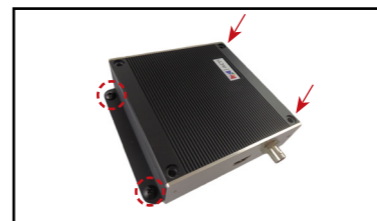
1. Video Decoder
2. Screw Pack
3. Cable Straps
4. Mounting Bracket
5. Power Adaptor
6. Terminal Block

Step 2: Mount the Device

The device can be mounted in three ways: Surface mount, Pole Mount or VESA Mount.

How to Surface Mount?

1. Using the supplied drill template, drill 4 holes on the surface.
2. Attach the 4 supplied screws to secure the device.



How to Use VESA Mount?

1. Place the device in between a VESA mount (10 x 10) and the monitor, with the top side of the device facing the monitor while the bottom side facing the VESA mount.
2. Attach the 4 supplied bolts to secure the device.

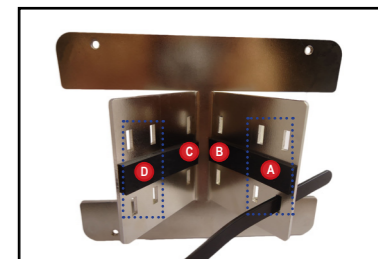


How to Use the Pole Mount?

1. With the smooth side outwards, insert the cable straps through the holes (A-B-C-D).

NOTE:

- Use the inner A and D holes if mounting on a pole with 1" diameter or the outer holes for a 2" diameter pole.



2. Align the pole mount to the pole.

3. Insert the cables through the latches and push all the way until they fit snugly to the pole.



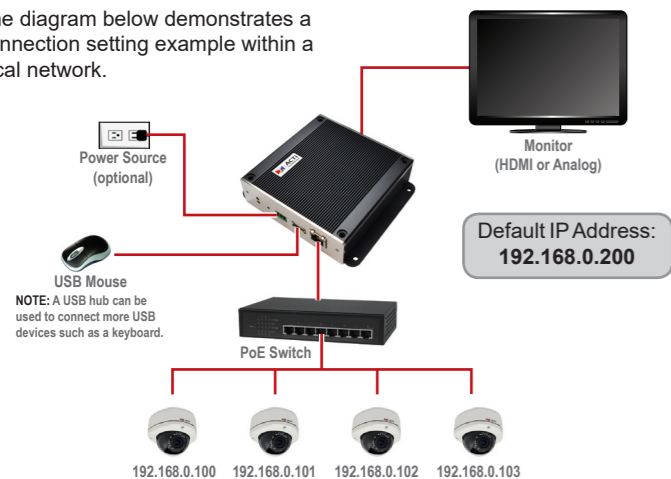
4. Align the device to the mount with the Ethernet port side up and HDMI port side down.

5. Secure the 4 supplied bolts to attach the device to the mount.



Step 3: Connect the Device

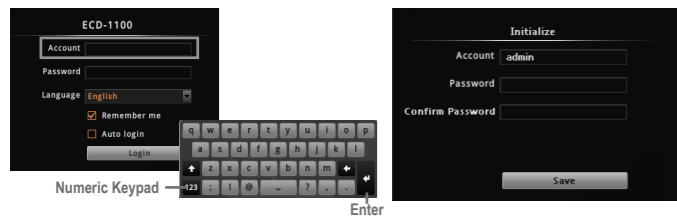
The diagram below demonstrates a connection setting example within a local network.



Step 4: Initialize the Device

Once all devices are connected, turn on the monitor to see Login screen.

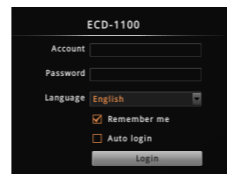
1. For first time login, type the default account, "admin", then click **Login**.
2. Then, configure the desired administrator Password.



Step 5: Login

When prompted, enter the **Account** and **Password**, then click **Login**.

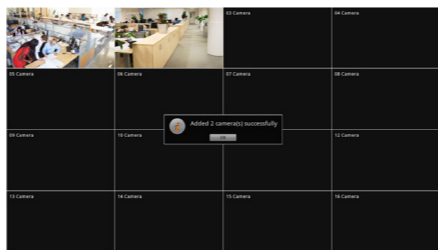
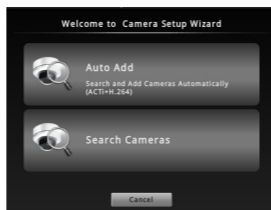
Default Account: admin
Password: user-defined



Step 6: Add Cameras

After the initial login, a setup wizard will appear.

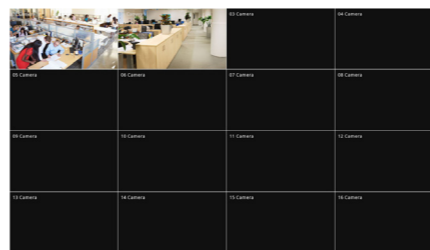
1. Follow the setup wizard to add cameras.
 - **Auto Add:** Search and automatically add cameras with the provided account and password.
 - **Search Cameras:** Cameras in the network will be listed. Then, manually select the cameras to be added.
2. A camera **Account/Password** prompt may appear; enter the corresponding account and password to add the camera.
3. The added camera(s) will be shown on the Live View window.



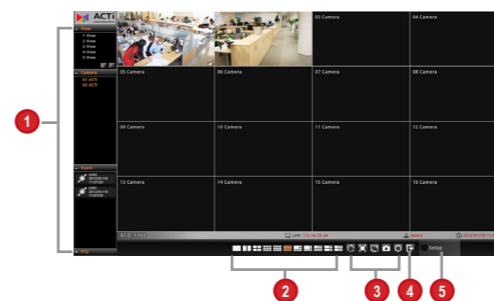
Step 7: Operate the Device

LIVE VIEW Full Screen

By default, the screen is in full screen mode. To view the main screen with controls, right-click on the mouse then, click **EXIT FULL SCREEN**.



MAIN Screen



Double-click on channel to view full screen

1	Layout View / Camera List / Event Panel / PTZ Panel		
2	Display Layout Mode		
3	Sequence Patrol / Stretch Video / Full Screen / Snapshot / Reset Channel Position		
4	Logout	5	Setup Menu

Quick Installation Guide ECD-1100

