

# Quick Installation Guide

## **ENR-010P**

4-Channel 1-Bay Mini Standalone NVR with 4-port PoE Connectors

## **ENR-020P**

9-Channel 1-Bay Mini Standalone NVR with 8-port PoE Connectors

# BEFORE YOU START

Thank you for purchasing ACTi ENR Standalone Network Video Recorder. This guide contains all the information you need to quickly set up ACTi ENR server system via local interface. For detailed instructions on installation, operation and how to log in to ENR as a web client, please refer to the product manuals provided on ACTi corporate website.

The items below are prerequisite for installation:

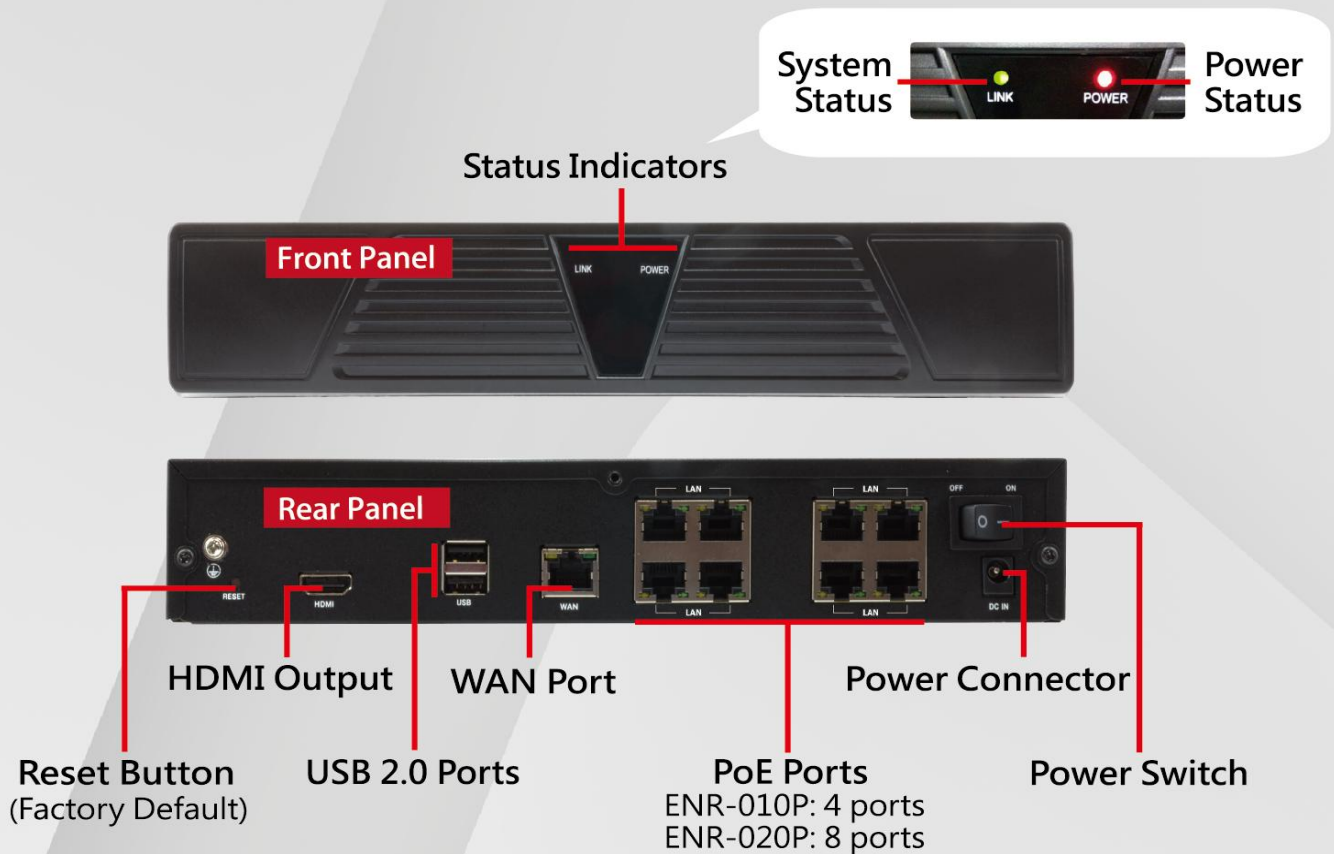
- Network cameras
- RJ-45 network cables
- USB mouse
- Monitor (1080p, HDMI input) with HDMI cable
- One ACTi-certified 3.5-inch SATA hard disk. You may find the certified disk models at <http://www.acti.com/hddselector>

## 01 UNPACK

The package includes the following items:

- ENR x 1
- Adapter converter x 1
- Power cord x 1
- Warranty card x 1
- Quick installation guide x 1
- USB mouse x 1
- Accessories pack x 1

## 02 AT A GLANCE



## 03 HARD DISK INSTALLATION

Follow the procedures below to install the hard disk before powering on this unit.

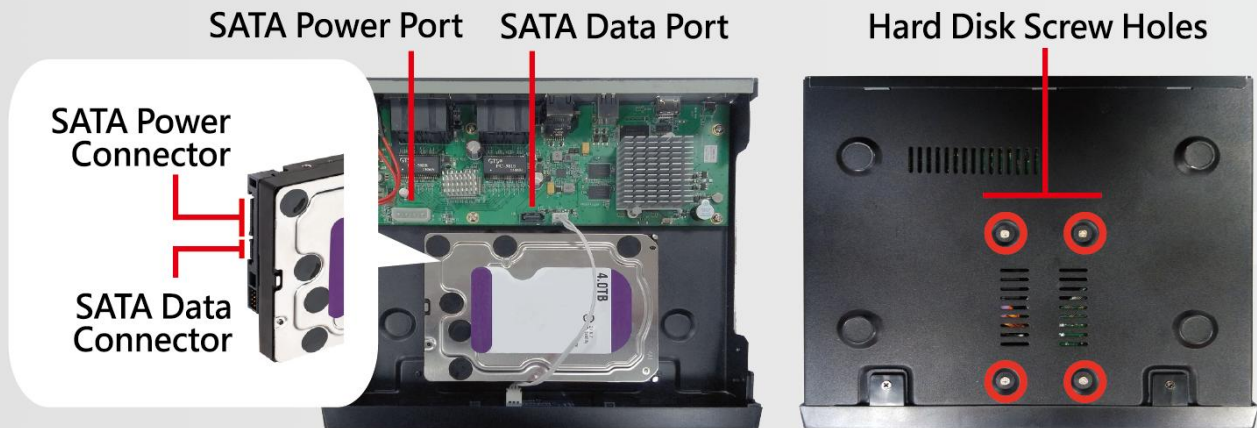
### Step 1

Loosen the five screws that fix the chassis (one on both the left and the right sides and three on the rear side) and remove the chassis cover.



### Step 2

Align the hard disk to the four holes on the bottom of the unit, and secure the disk with the provided disk screws.



### Step 3

Connect the provided SATA power cable from the SATA power port on the motherboard to the hard disk's power connector. And connect the SATA data cable from the SATA data port on the motherboard to the hard disk's data connector.



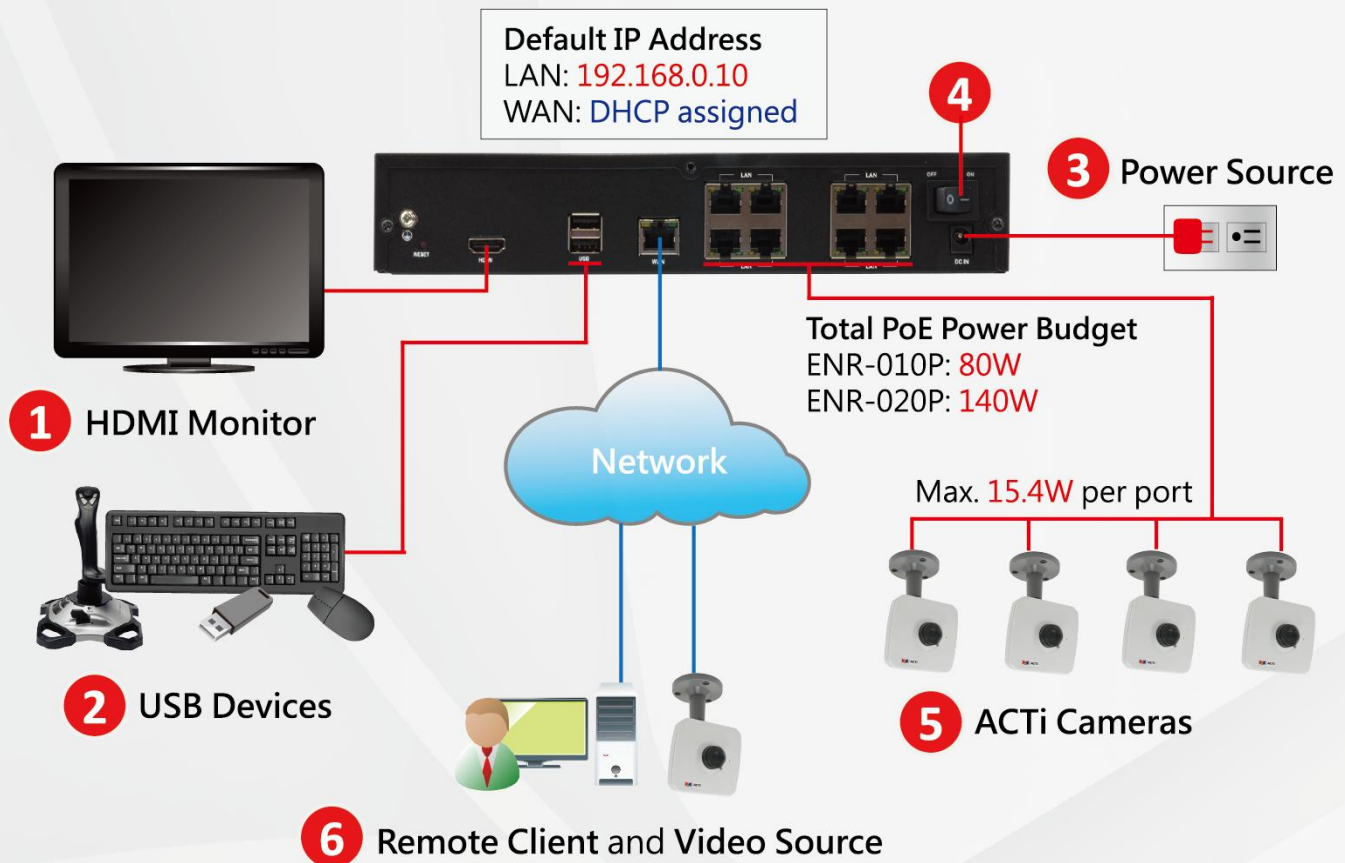
SATA Power Cable      SATA Data Cable

### Step 4

Replace the chassis cover and fix it with the five chassis screws.

## 04 CONNECTIONS

Follow the procedures to connect the devices. These devices are supposed to be connected in the sequence shown below:



1. Connect the HDMI monitor.
2. Connect the USB devices.
3. Plug the power adapter into ENR and the electricity outlet.
4. On the unit's rear panel, press down Power Switch to the side with "I" mark, and the Power Status Indicator on the front panel will turn solid red.



5. Configure the network setting of the cameras to DHCP-enabled mode, and connect them to the PoE Ports with network cables. ENR will automatically assign IP addresses to these connected cameras. It is essential that your power plan take ENR's total power budget and each connected device's power requirements into consideration.
6. Attach the network cable to WAN Port (optional, required for remote client connection or another remote video source from another network).



## 05 LOGIN



ENR-020P

Account:

Password:

Language:

Remember me

Auto login

On Login window, input Account and Password on virtual keypad, and then click "Login".

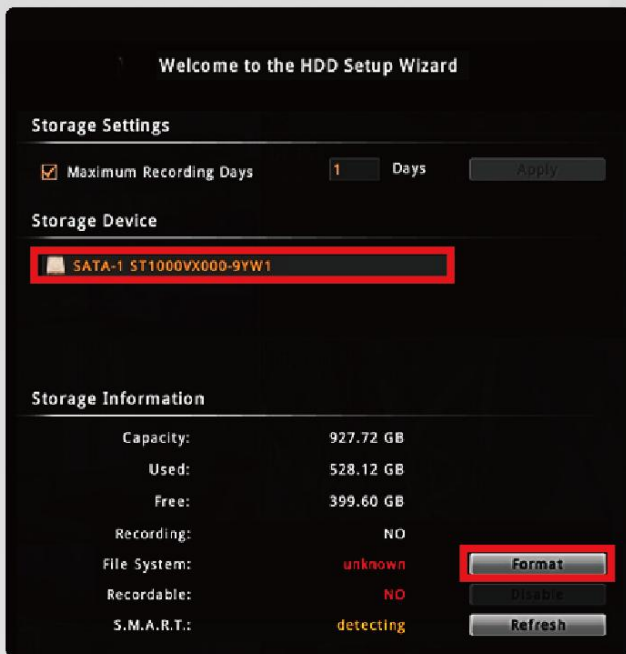
- Account: **admin**
- Password: **123456**



Numeric Keypad

Enter

## 06 FORMAT DISKS



Welcome to the HDD Setup Wizard

Storage Settings

Maximum Recording Days:  Days

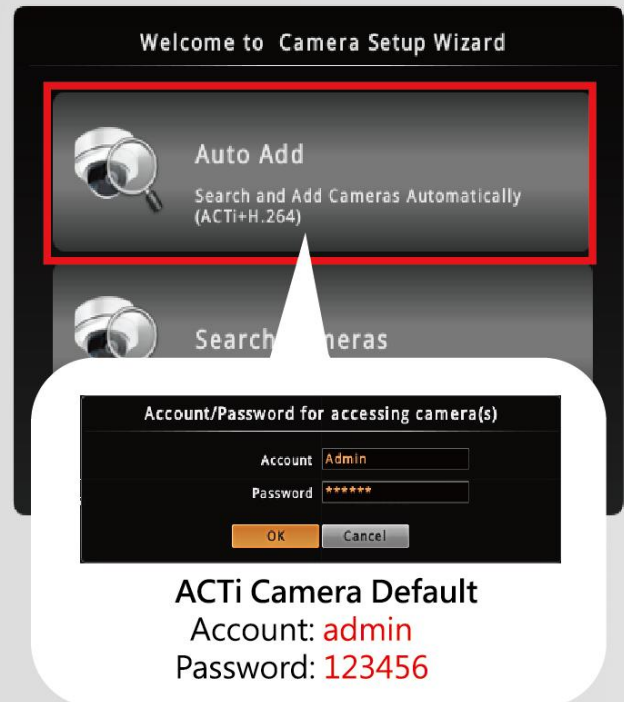
Storage Device

Storage Information

Capacity:	927.72 GB
Used:	528.12 GB
Free:	399.60 GB
Recording:	NO
File System:	unknown
Recordable:	NO
S.M.A.R.T.:	detecting

On HDD Setup Wizard window, select the unformatted disk and click "Format". Repeat this step to format other disks, and then click "OK".

## 07 ADD CAMERAS



Welcome to Camera Setup Wizard

Search and Add Cameras Automatically (ACTi+H.264)

Account/Password for accessing camera(s)

Account:

Password:

**ACTi Camera Default**  
Account: **admin**  
Password: **123456**

On Camera Setup Wizard window, click "Auto Add", input the Account and Password to access the cameras, and they will be added to the system.

### What's ENR's IP Address?

After logging in to ENR, you can find its local IP address and DHCP-assigned IP address shown on the bottom of Live View screen.

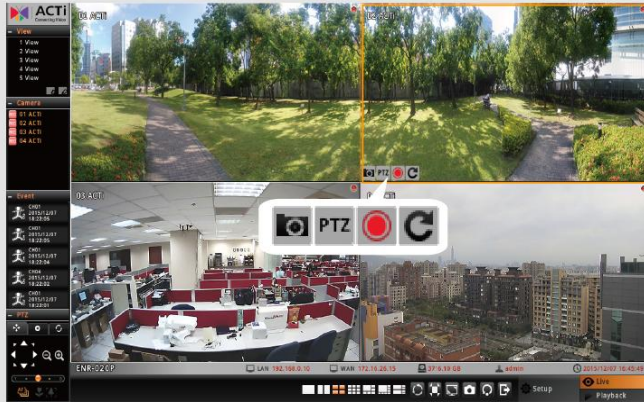
LAN 192.168.0.10 WAN 172.16.26.15

### Technical Support

If you have any question during system installation, please feel free to contact our engineers via:

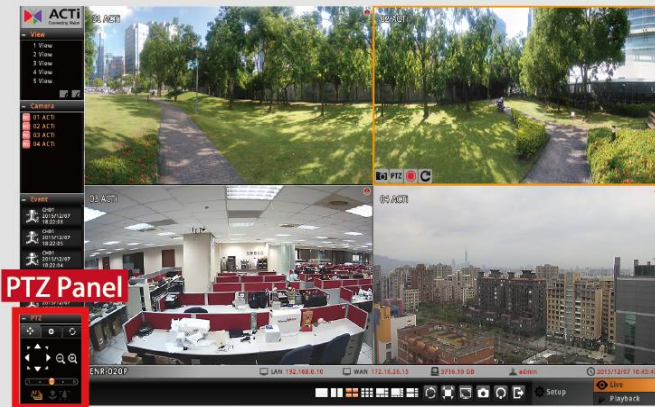
- Customer Help Desk platform: <http://www.acti.com/CHD>
- US/Canada toll-free number: 1-866-410-2284 (ACTi)

## 08 CHECK LIVE VIEW



After the cameras are added, you will immediately see live streams on Live View screen.

- To take a snapshot, select the channel and then click on
- To view a single channel in 1x1(full screen) layout, double-click on the channel.

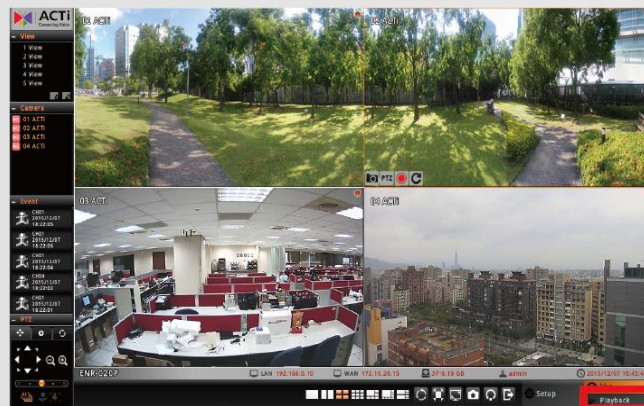


To validate PTZ operations:

- (1) Select a PTZ camera channel.
- (2) Click in the bottom left corner to open PTZ panel, and use the on-screen buttons to manipulate the camera.

Please note that the available layout options vary by your ENR model.

## 09 CHECK RECORDINGS



On Live View screen, click on in the bottom right corner to enter Playback screen.



On the time bar, drag the current-time indicator to your desired position, and click on on Playback control panel to play.

- To export video, select the channel and then click on