

User Manual

IP-S101

IP Combo KVM Extender



751

Designed and manufactured by Austin Hughes

Legal Information

First English printing, October 2002

Information in this document has been carefully checked for accuracy; however, no guarantee is given to the correctness of the contents. The information in this document is subject to change without notice. We are not liable for any injury or loss that results from the use of this equipment.

Safety Instructions

Please read all of these instructions carefully before you use the device. Save this manual for future reference.

- Unplug equipment before cleaning. Don't use liquid or spray detergent; use a moist cloth.
- Keep equipment away from excessive humidity and heat. Preferably, keep it in an air-conditioned environment with temperatures not exceeding 40° Celsius (104° Fahrenheit).
- When installing, place the equipment on a sturdy, level surface to prevent it from accidentally falling and causing damage to other equipment or injury to persons nearby.
- When the equipment is in an open position, do not cover, block or in any way obstruct the gap between it and the power supply. Proper air convection is necessary to keep it from overheating.
- Arrange the equipment's power cord in such a way that others won't trip or fall over it.
- If you are using a power cord that didn't ship with the equipment, ensure that it is rated for the voltage and current labeled on the equipment's electrical ratings label. The voltage rating on the cord should be higher than the one listed on the equipment's ratings label.
- Observe all precautions and warnings attached to the equipment.
- If you don't intend on using the equipment for a long time, disconnect it from the power outlet to prevent being damaged by transient over-voltage.
- Keep all liquids away from the equipment to minimize the risk of accidental spillage. Liquid spilled on to the power supply or on other hardware may cause damage, fire or electrical shock.
- Only qualified service personnel should open the chassis. Opening it yourself could damage the equipment and invalidate its warranty.
- If any part of the equipment becomes damaged or stops functioning, have it checked by qualified service personnel.

What the warranty does not cover

- Any product, on which the serial number has been defaced, modified or removed.
- Damage, deterioration or malfunction resulting from:
 - Accident, misuse, neglect, fire, water, lightning, or other acts of nature, unauthorized product modification, or failure to follow instructions supplied with the product.
 - Repair or attempted repair by anyone not authorized by us.
 - Any damage of the product due to shipment.
 - Removal or installation of the product.
 - Causes external to the product, such as electric power fluctuation or failure.
 - Use of supplies or parts not meeting our specifications.
 - Normal wear and tear.
 - Any other causes which does not relate to a product defect.
- Removal, installation, and set-up service charges.

Regulatory Notices Federal Communications Commission (FCC)

This equipment has been tested and found to comply with the limits for a Class B digital device, pursuant to Part 15 of the FCC rules. These limits are designed to provide reasonable protection against harmful interference in a residential installation.

Any changes or modifications made to this equipment may void the user's authority to operate this equipment. This equipment generates, uses, and can radiate radio frequency energy and, if not installed and used in accordance with the instructions, may cause harmful interference to radio communications.

However, there is no guarantee that interference will not occur in a particular installation. If this equipment does cause harmful interference to radio or television reception, which can be determined by turning the equipment off and on, the user is encouraged to try to correct the interference by one or more of the following measures:

- Re-position or relocate the receiving antenna.
- Increase the separation between the equipment and receiver.
- Connect the equipment into an outlet on a circuit different from that to which the receiver is connected.

Contents

< Part. 1 > IP-S101

1.1	Package Contents	P.1
1.2	Specification	P.2

< Part. 2 > Application

2.1	Connection to KVM console port over IP	P.3
2.2	Connection to computer over IP	P.4

< Part. 3 > IP Initial Setup P.5 - 8

Before Installation

- It is very important to mount the equipment in a suitable cabinet or on a stable surface.
- Make sure the place has a good ventilation, is out of direct sunlight, away from sources of excessive dust, dirt, heat, water, moisture and vibration.

Unpacking

The equipment comes with the standard parts shown in package content. Check and make sure they are included and in good condition. If anything is missing, or damaged, contact the supplier immediately.

< Part 1 >

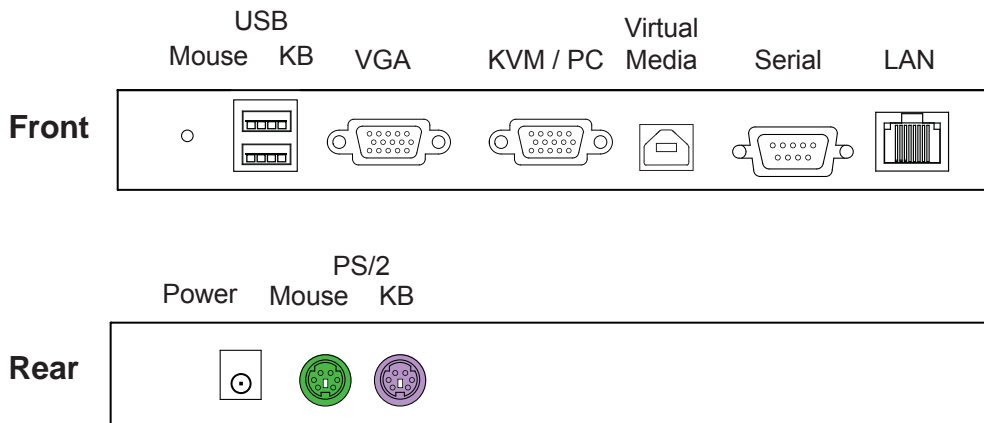
IP-S101

< 1.1 > Package Contents



IP-S101 unit X 1

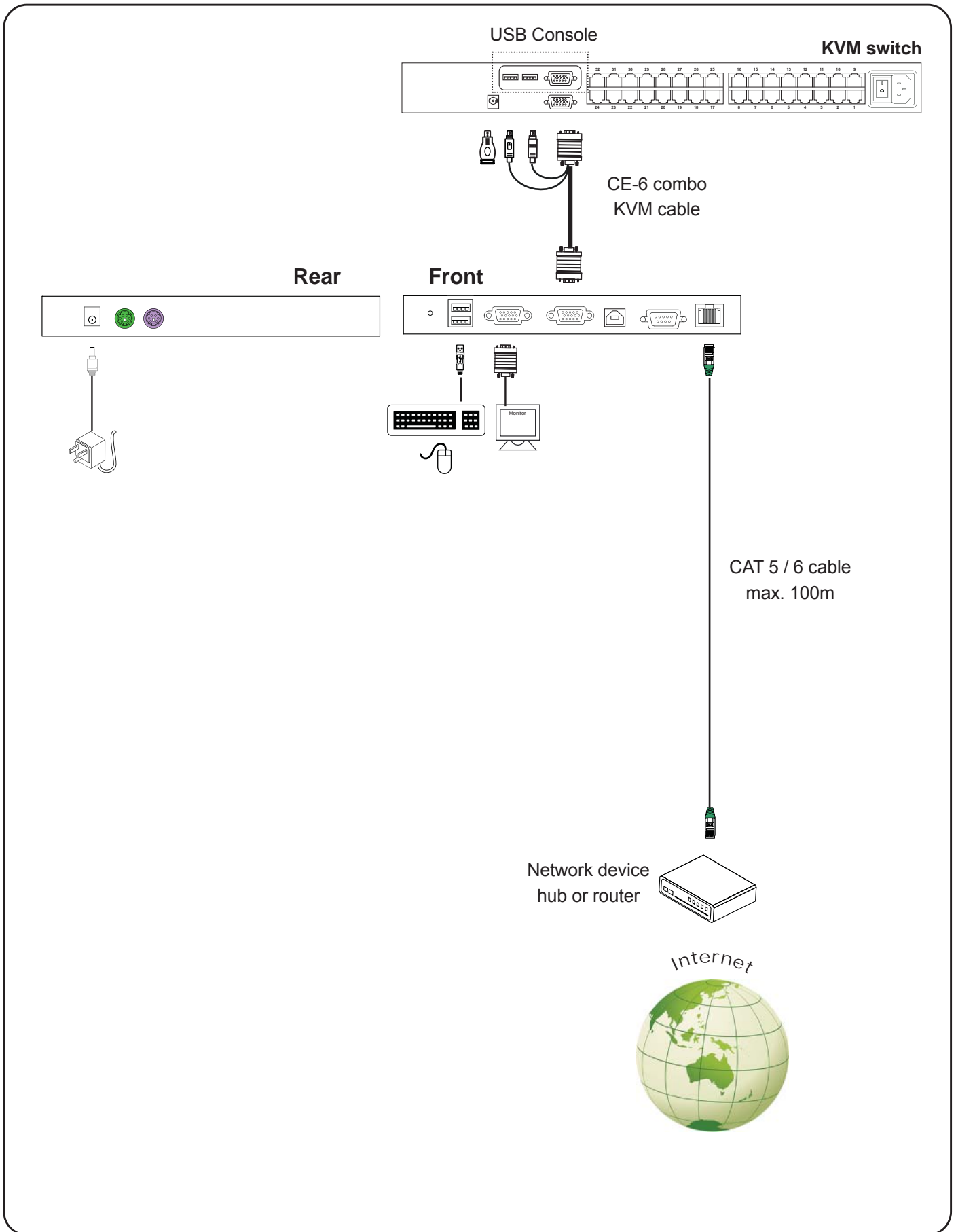
- CE-6 6ft Combo KVM cable X 1
- Power adapter w/ power cord (for receiver) X 1

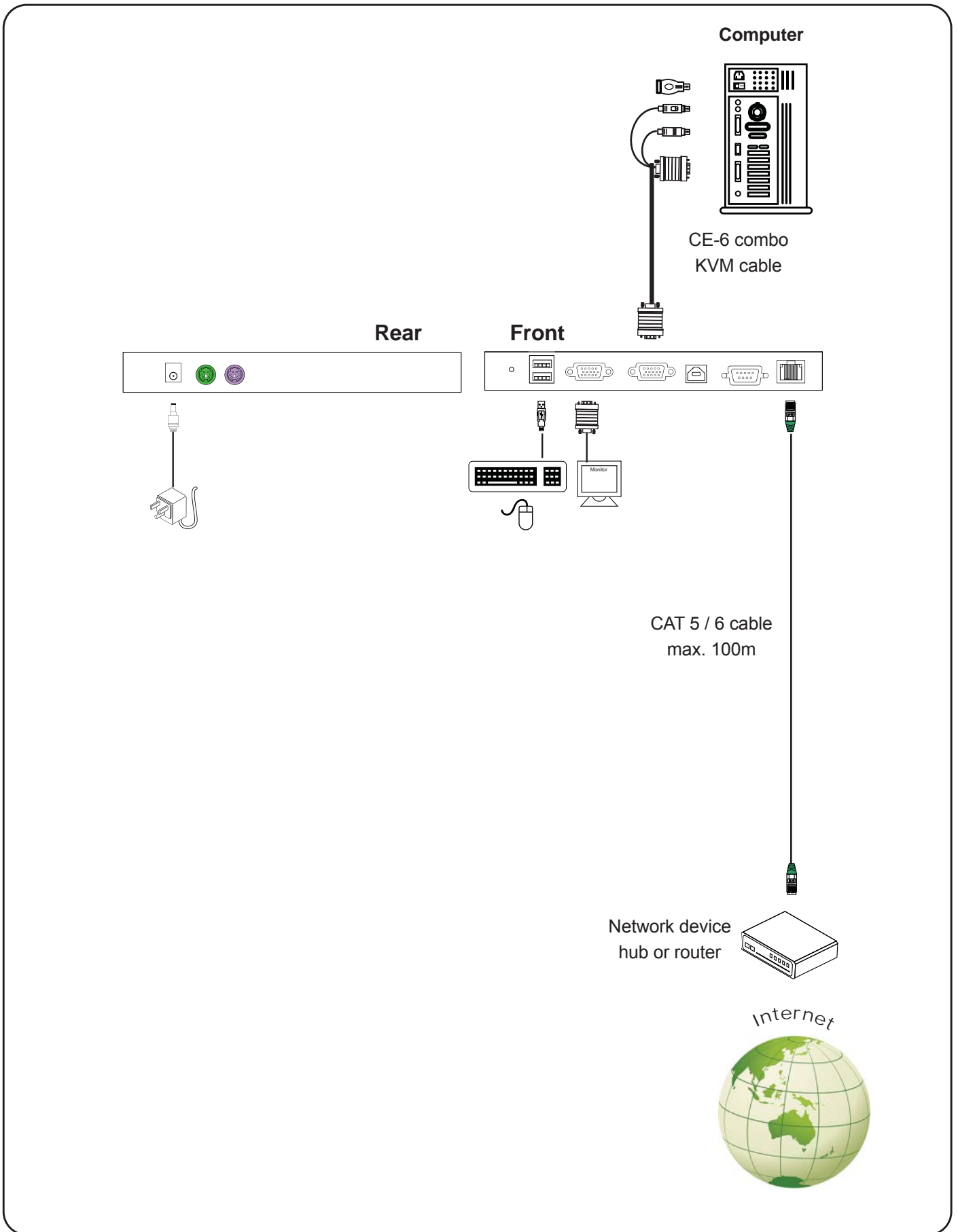


IP-S101 Specification

IP Connection	1 x RJ-45 Ethernet 10/100
Console Connection	1 x DB-15 VGA, up to 1600 x 1200 2 x USB type connector for keyboard & mouse 2 x PS/2 mini Din 6-pin for keyboard & mouse
PC Connection	1 x DB-15 combo KVM port
Virtual Media	USB type B receptacle
Serial	1 x DB9 male
Power Input	12V power adapter
Power Consumption	Max. 11W
Operating Temperature	0 to 55°C degree
Storage Temperature	-20 to 60°C degree
Operating Humidity	20~90%, non-condensing
Storage Humidity	5 ~90%, non-condensing
Operating Altitude	16,000 ft
Non-operating Altitude	40,000 ft
Shock	10G acceleration (11ms duration)
Vibration	5~500Hz 1G RMS random
Dimension	203.5W x 113.3D x 27.3H mm
Weight	1.7 kg / 3.74 lb
Environmental	RoHS2 & REACH compliant

< 2.1 > Connection to KVM console port over IP



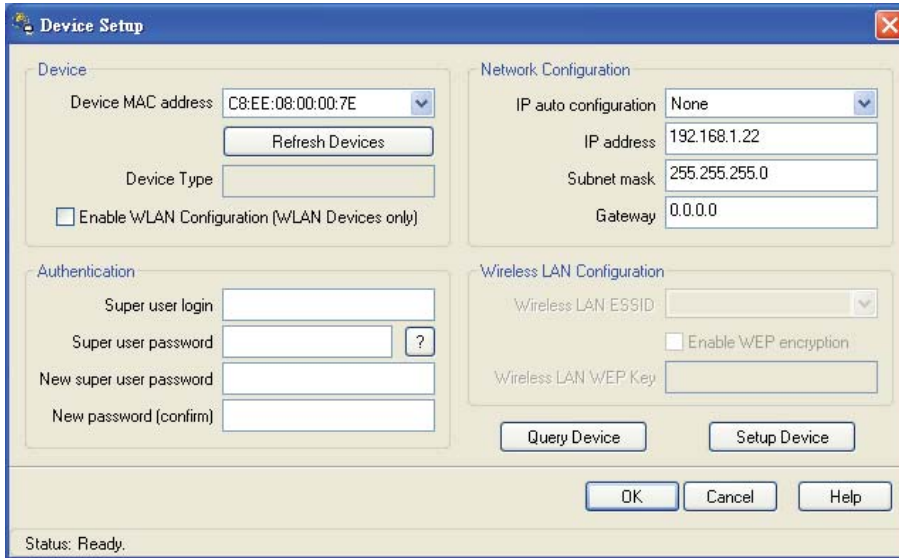


After the cable connection, please take the following steps to configure the IP KVM Extender :

1. Download IPKVMsetup.exe from the link:

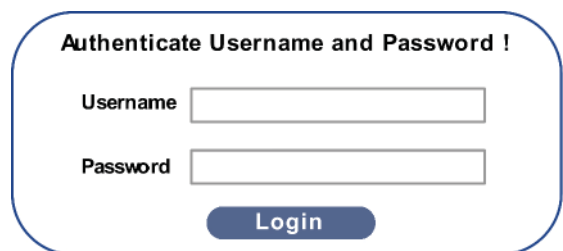
www.austin-hughes.com/support/utilities/cyberview/IPKVMsetup.exe

2. Double click **IPKVMsetup.exe** to configure the IP KVM Extender by device setup as below.



3. Click **Refresh Device** to search the connected IP KVM Extender
4. Select the M.A.C. address, which you want to setup, then click **Query Device**
5. Enter Super user login. **The default is super**
6. Enter Super user password. **The default is pass**
7. Enter the new super user password
8. Re-enter the new password
9. Change the desired IP address / Subnet mask / Gateway, then click **Setup Device** to confirm the setting to IP KVM Extender
10. The default address is http://192.168.1.22

11. Open Internet Explorer (I.E.), version 6.0 or above
12. Enter the IP KVM Extender address into the address bar
- For Single IP - http://192.168.1.22
13. Enter username (default is super)
Password (default is pass)



14. After successful login to IP KVM Extender, the user will enter the main page of IP KVM Extender



The setting is enough for intranet.

If the users access KVM GUI via internet, please ask MIS for assistance and download IP KVM user manual from the link :

www.austin-hughes.com/support/usermanual/cyberview/UM-CV-IP.pdf



You must complete the following tasks after the IP console setting is performed.

(1) TARGET SERVER SETUP **Servers connected to KVM

Resolution

The IP KVM remote console recognizes several varieties of video display formats with resolutions up to 1600 x 1200 @60Hz. (Refer to the User Manual for a list of supported video formats). Minimize bandwidth by setting the target server's video resolution to the minimum setting required for your remote monitoring application.

The following video modes are recommended:

- (i) 1024 x 768 @ 60Hz
- (ii) 1280 x 1024 @ 60Hz

On a Windows target server system, select Control Panel > Display > Settings.
Modify the screen resolution value as necessary.

Mouse

Use generic mouse drivers for optimum mouse control during remote sessions. Set the mouse pointer speed to a middle setting with no acceleration or snap-to effects.

On a Windows target server system, select Control Panel > Mouse > Pointer Options
Set the pointer speed to medium and disable Enhanced pointer precision

For Linux GUIs, set the mouse acceleration to exactly 1 and the threshold to exactly 1.



If your keyboard keeps repeating keys when it is plugged into the KVM. Please follow either one below :

(a.)

Enable key release timeout if you experience duplicated keystrokes during poor network performance.

- login to IP KVM remote console
- go to Interfaces KVM settings > Keyboard / Mouse
- click the Key Release Timeout
- adjust Timeout after if necessary

(b.)

Reduce video bandwidth usage if you experience duplicated keystrokes during poor network

- login to IP KVM remote console
- go to Interfaces KVM Settings > User Console > Transmission Encoding,
- select Manually
- adjust Compression to [0-none] and Color depth to [8-bit – 256 col]

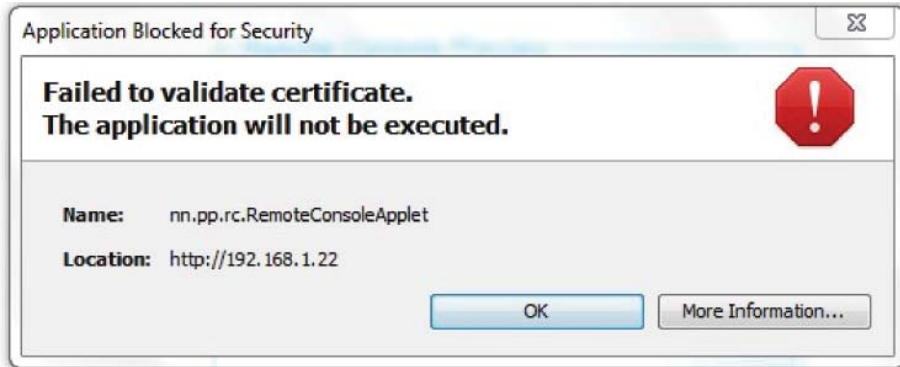
(2) REMOTE CLIENT COMPUTER SETUP

The remote client computer must have a web browser (such as Microsoft Internet Explorer, Mozilla Firefox, and Netscape Navigator) and a Java Virtual Machine (version 1.4 or higher) installed. Enable Java on the web browser.



JAVA Update for IP KVM

Due to the latest update from Java security, customer may face the "JAVA Block" message while accessing the remote console over IP as below :

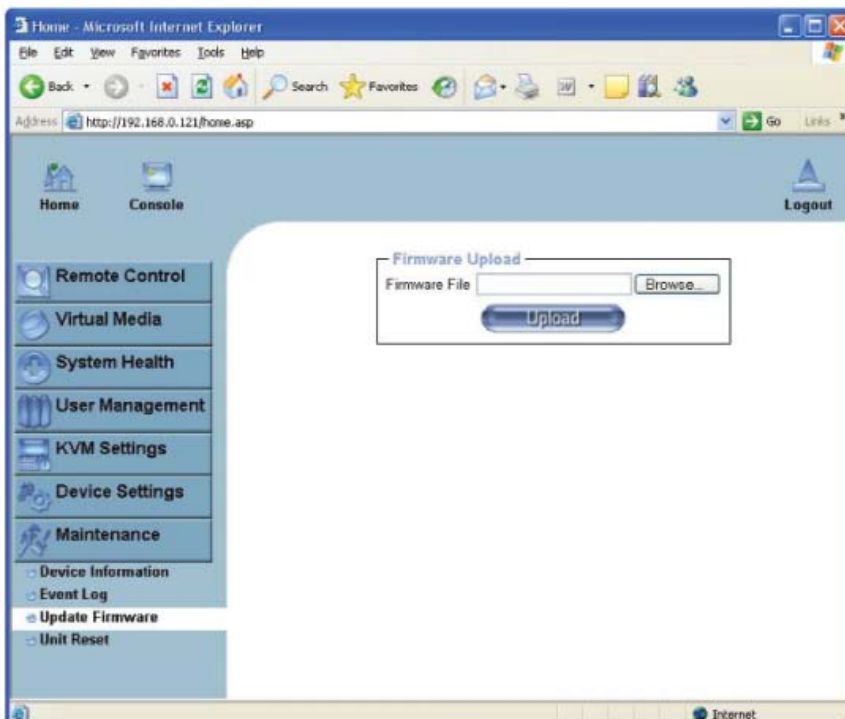


If it said so, please download the latest IP KVM firmware (version aust-i11-150608) from the link below : <http://www.austin-hughes.com/resources/software/kvm-switch>

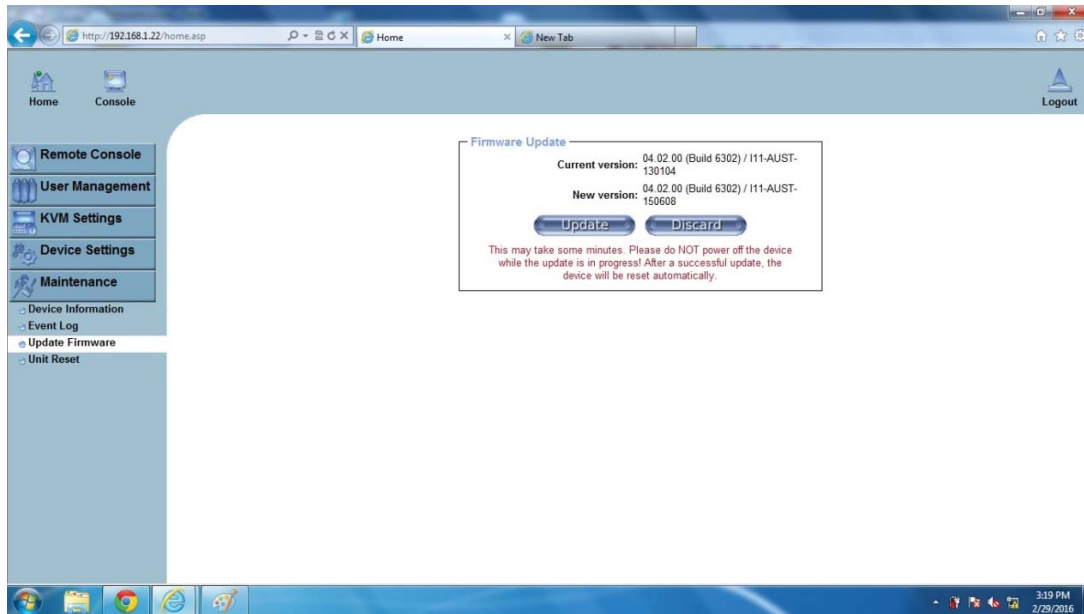
Then follow the attached steps to update the firmware.

Firmware Update Steps

- 1) Download the latest IP KVM firmware (version aust-i11-150608) from the link <http://www.austin-hughes.com/resources/software/kvm-switch>
- 2) Login the IP KVM
- 3) Click < Update Firmware >
- 4) Click < Browse > to select the firmware file
- 5) Click < Upload >

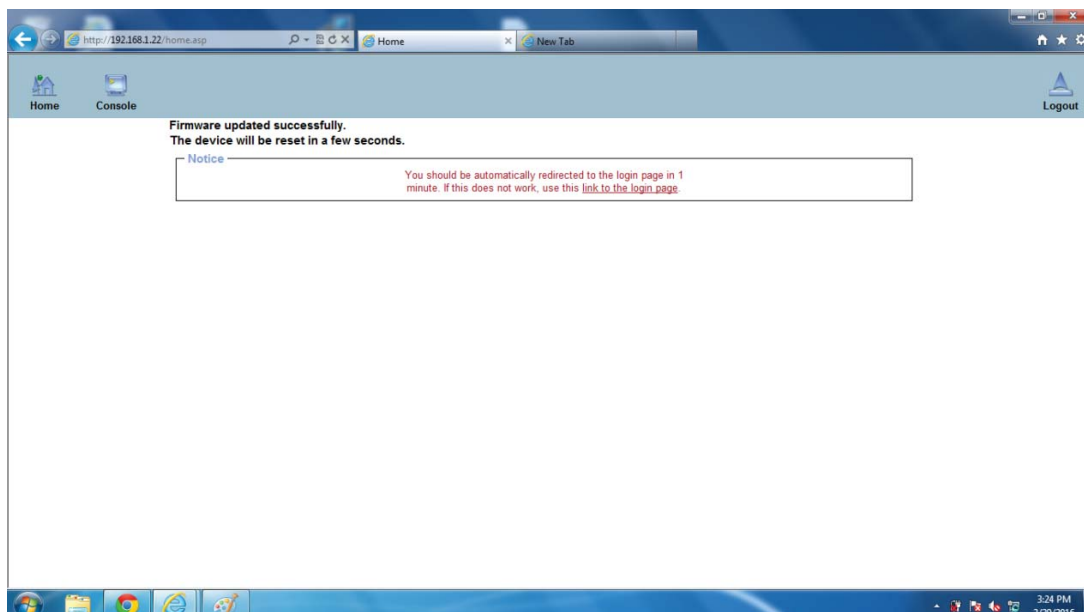


6) Click < Update >



After the firmware has been updated, IP KVM will reset automatically.

After one minute, you will be redirected to the Login page and requested to login again.



- Completed

The company reserves the right to modify product specifications without prior notice and assumes no responsibility for any error which may appear in this publication.

All brand names, logo and registered trademarks are properties of their respective owners.

Copyright 2016 Austin Hughes Electronics Ltd. All rights reserved.