

Intelligent Power Panel

IPP-M Series

More convenient, More information, Less cost

IPP series gain multi-circuits power information from remote site



IPP series is a single/three phase remotely monitored power meter, built-in 12 independent measurement modules. User may select any one phase of the input voltage as a measurement reference. It supports the monitoring of twelve loops of 1P2W, or four loops of 3P3W/3P4W, or a hybrid combination, providing flexible application.

Each built-in power measurement module supports to monitor voltage, current, power, power factor, kWh and other information in real time. All information can be displayed sequentially on LED monitor by manual and communicated with monitoring device via web browser. SNMP utility is free bundled in the IPP series.

IPP series built-in three groups isolated PT and 12 sets of removable external isolated CT, supports the most secure way to indirectly measure branches of power information in the power distribution panel. IPP series is small and may be easily surface mounted on anywhere you prefer.



Digipower Manufacturing Inc.

IPP-M Series

Intelligent Power Panel

Features

Cost saving for software installation

IPP series provides free central management utility to monitor group of IPP series, saving a lot time and cost to build up management system.

Various method to manage power information

User may monitor power consumption on web, utility and APP.

Hot line installation

IPP series provide CT clamps for installation on the monitored circuit. The installation could be executed under power-on status.

Dedicated Loops Measurement

There are 12 built-in measurement modules. Each module with independent and complete power measurement capabilities, provides real time measurement data.

Flexibility

12 measurement modules may be configured optionally as single-phase, three-phase power or a combination of hybrid.

Multi-functions

Each loop may measure single and three-phase of the real time voltage (V), current (A), power (W), power factor (PF) and the totalization of kWh, kVARh, kVAh.

Full Range

The voltage range is 60V-440V (50 / 60Hz.); the current range is 0.5A-50A and maximum to 200A.

High Resolution

Active power measurement shows 0.001kW-50kW; energy measurement displays 0.001kWh-99999kWh.

Safety

IPP series adopts U.S. high-precision industrial microprocessor with a ferroelectric memory (FRAM), being free from power outages and restriction of erase/write cycles. It is highly anti-noise and reliable on saving data.

High Precision

The accuracy rate of kWh measurement is within $\pm 1.0\%$ (@PF=1.0, Rated Current), and W, V, A, VA, PF within $\pm 1.0\%$ (@Rated Current).

Remote Monitor

IPP series may remotely monitor power consumption Via TCP/IP and SNMP; it reads complete power information of each loop once a second.

Reliability

IPP series adopts indirect measurement through PT and CT, isolated from measurement device. After installation all wiring and terminals are protected by terminal cover. IPP series also grants FCC & CE EMC certification.

Low power consumption

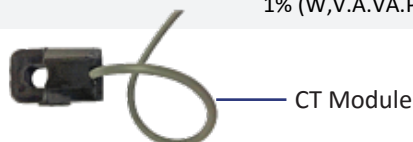
The power consumption of IPP series is less than 3W.

Specification

Model	IPP-M series
Phase& Wire	1P2W / 1P3W / 3P3W / 3P4W
Module	12 power monitoring modules with 1P2W
Communication	
Display	5 digits LED display power information and IP address
	1 digit LED load number
Ethernet	RJ45 / Wi-fi (USB dongle)
Temperature & Humidity	RJ11x2 (ENV Probe option)
Comm. Protocols	ICMP,ARP,IP,TCP,UDP,DHCP,HTTP(S),SNMPv1,v2,v3
Operation	
Power Usage	lower than 3W, AC 115V/230V
Certification	FCC & CE
Operation Temperature	-20~+60 Celsius degree
Operation Humidity	20%~95% RH
Size	192x253x42 mm
Weight	1 kg

IPP series can work with the following current transducer

CT inner diameter(mm)	25∅	16∅	10∅
Rated. Current (Max.)	50 (200) A	30 (120) A	15 (60) A
Rated Voltage		220V / 60Hz	
Measurement			
Voltage		60.00V～440.00V	
Current	0.5A～200A	0.2A～120A	0.1A～60A
Active Power	0.001kW～50kW	0.001kW～30kW	0.001kW～15kW
Apparent Power	0.001kVA～50kVA	0.001kVA～30kVA	0.001kVA～15kVA
PF		0～1.00	
kWH		0.001kWh～99999kWh	
Active Power		0.001kVARh～99999kVARh	
Apparent Power		0.001kVAh～99999kVAh	
Precision			
kW		1% (PF=1.0 ， rated current)	
Power		1% (W,V.A.VA.PF ， rated current)	

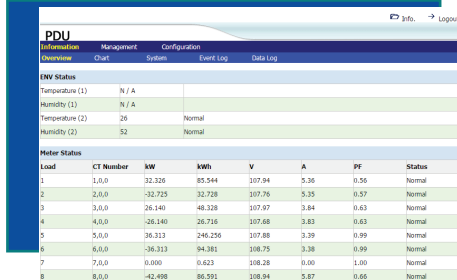


IPP-M Series

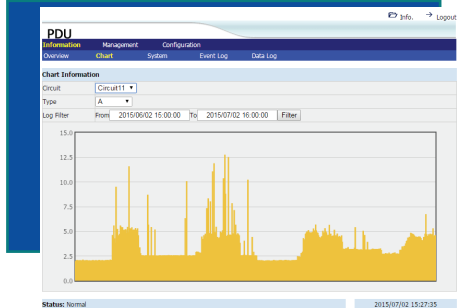
Intelligent Power Panel

Web Interfaces

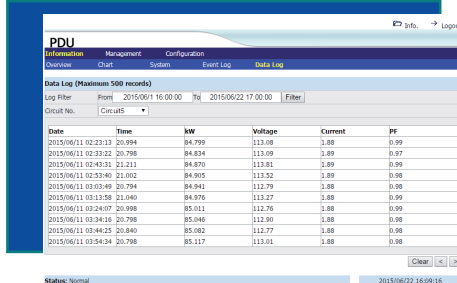
Real time monitor of power information



Historical chart query



Historical data query

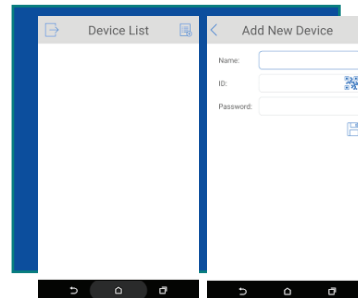


Model

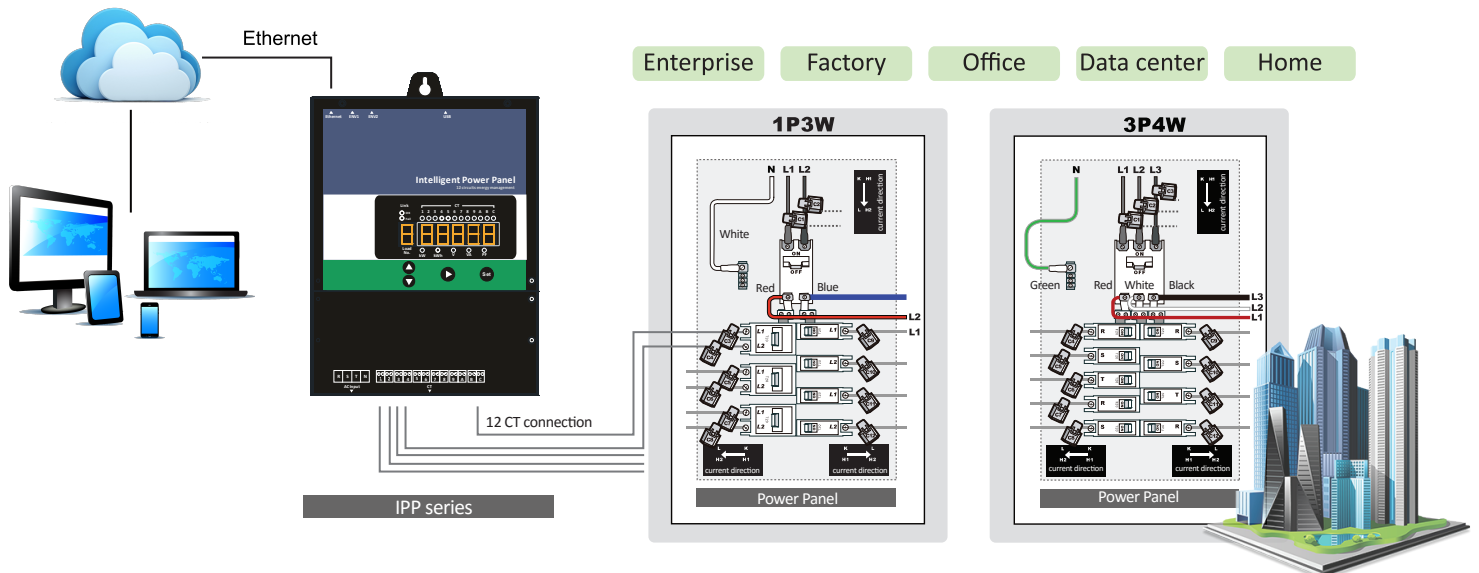
Model No.	Phase&Wire	Package included
IPP-M1-C00	1P2W/1P3W	IPP x1, 10Ø x 12, USB Wifi Dongle, Management Utility
IPP-M2-C00	Reserved	
IPP-M3-C00	3P3W	
IPP-M4-C00	3P4W	

APP

Monitor IPP measurement information from cloud



Application Diagram



9F-7, No.75, Sec. 1, Xintai 5th Rd., Xizhi Dist., New Taipei City, Taiwan
<http://www.digipower.com.tw> Mail: sales@digipower.com.tw Tel: +886-2-26988618 Fax: +886-2-26988610