

1 Unpacking

Open the box and unpack the items. Your package should include:

- One EL8315 Hardened PoE Media Converter

If any items are missing or damaged, notify your EtherWAN representative. If possible, save the carton and packing material in case you need to ship or store the switch in the future.

2 Select a Location

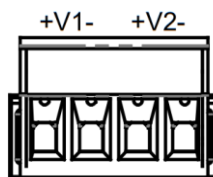
- Installations: DIN-Rail mount.
- Choose a dry area with ambient temperature between -40 and 75°C (-40 and 167°F).
- Be sure there is adequate airflow.

3 Apply Power

DC Terminal Block Power Inputs: Two power inputs must be connected in order to enable the power redundancy alarm. The Fault LED indicator will light up to if either Power 1 or Power 2 ceases to function. However, the media converter will continue to work normally even if the fault LED is lit, as long as the other power source is functioning.

Terminal Block

This unit supports two power inputs. Follow the printed polarity for +V1-, +V2- and GND. Connect positive wires to V1(2)+, connect negative wires to V1(2)-, and connect a wire from the unit's chassis ground to the earth ground.

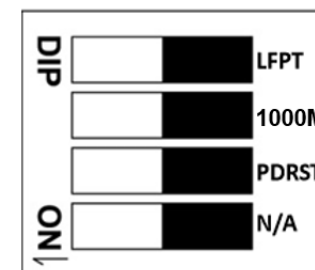


Power Input Assignment			
Power2	+	52-56VDC	Terminal Block
	-	Power Ground	
Power1	+	52-56VDC	
	-	Power Ground	
		⏏	Earth Ground

PoE

The device supports IEEE802.3bt Power over Ethernet (PoE) Power Sourcing Equipment (PSE). Power consumption is 93 Watts (90W for PoE) Max.

4 DIP Switch



There are four pins on the DIP switch for port settings. Refer to the table below.

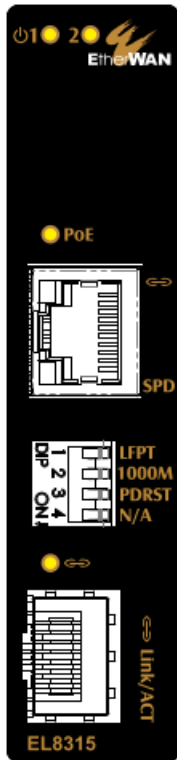
No.	ON	OFF (Default)
1	Enable LFPT	Disable LFPT
2	SFP speed at 100M	SFP speed at 1000M
3	PoE PD reset Enable	PoE PD reset Disable
4	N/A	

Note: After any DIP switch configuration change, power down and then restart the unit.

LFPT: Link-Fault-Pass-Through allows network operators to stay aware of network connection status. If a link fails, the function will disable the link on the other side, therefore notifying the connected device of the link failure.

PDRST: When the PDRST function is enabled, by reinsertion Fiber connection will automatically reboot PD device.

5 LED Indicators

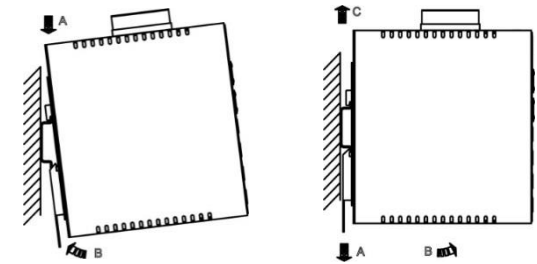


LEDs	State	Indication
Power 1, 2	Steady	Power on
	Off	Power off
PoE	Steady	Powered Device (PD) is connected
	Off	Powered Device (PD) is disconnected
Link/ACT (10/100/1000TX)	Steady	Network connection is established on TX port
	Flashing	Transmitting or receiving data
	Off	No network connection established
SPD (10/100/1000TX)	Amber	Connected at speed of 1000Mbps
	Off	Connected at speed of 10/100Mbps
Link/ACT (SFP)	Steady	Network connection is established on Fiber port
	Flashing	Transmitting or receiving data
	Off	No network connection established

6 Other Information

DIN-Rail Assembly Startup, and Dismantling

- Assembly:** Place the media converter on the DIN rail from above using the slot. Push the front of the media converter toward the mounting surface until it audibly snaps into place.
- Dismantling:** Pull out the lower edge and then remove the device from the DIN rail.



EtherWAN Systems, Inc.

33F, No. 93, Sec. 1, Xintai 5th Rd., Xizhi Dist., New Taipei City, 221 Taiwan

The full product manual can be downloaded from:

www.etherwan.com

