

# 9110 SERIES

MONITOR ARMS



innovative™  
design works

# SAVE MAXIMUM SPACE.

The 9110 wall mount is ideal for hanging your display to save maximum space. This flat panel wall mount allows pivot and tilt. You can add optional extender arms to allow even greater flexibility and range.



## FEATURES

- **Adjustable:** This computer monitor and flat screen TV wall mount features adjustable tension at joints - ideal for touch-screen applications.
- **Easy:** Easily pivot the monitor from portrait to landscape.
- **Customizable:** Extend the wall mount with available 4" and 8" extension arms; they can also be combined to increase the extension up to 18".
- **Compatible:** VESA-monitor compatible - 75mm & 100mm VESA adapter included.

## SPECIFICATIONS

### Finishes

 Vista Black  
 104

### Dimensions

Screen Size: Up to 43"  
 Extension Range: 4" (9110)  
                           7.6" (9110-4)  
                           11.1" (9110-8.5)  
                           14.6" (9110-8.5-4)  
                           18.1" (9110-8.5-8.5)  
 Weight Capacity: Up to 45 lbs. (9110)  
                           Up to 38 lbs. (9110-4)  
                           Up to 28 lbs. (9110-8.5)  
                           Up to 22 lbs. (9110-8.5-4)  
                           Up to 18 lbs. (9110-8.5-8.5)

### Part Numbers

9110-\_\_\_  
 9110-4-\_\_\_  
 9110-8.5-\_\_\_  
 9110-8.5-4-\_\_\_  
 9110-8.5-8.5-\_\_\_



9110

9110-4

9110-8.5



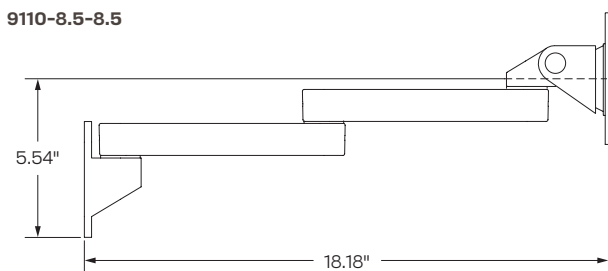
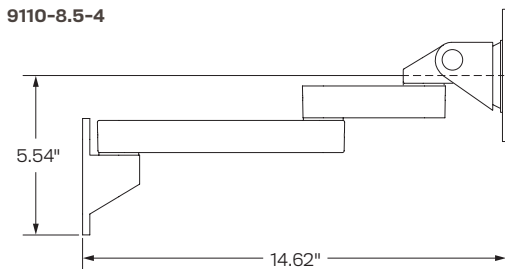
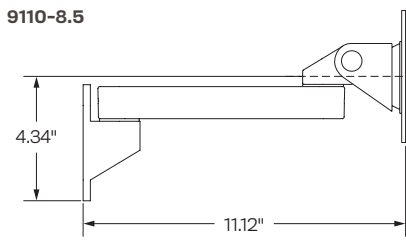
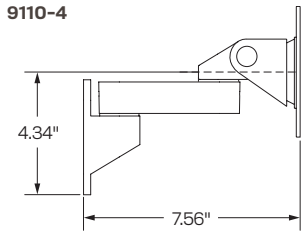
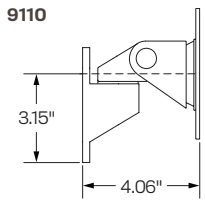
9110-8.5-4

9110-8.5-8.5

## WARRANTY

10 years

CAPABILITIES



Mount  
(All Models)

