

M43-H04H04

HDMI 2.0 QUADVIEW DUO

VIDEO PROCESSOR (4 in, 2 out)



OVERVIEW

Partilink QuadView Duo V43-H04H02 is a HDMI 2.0 Multiview Processor with 4 HDMI inputs and 2 HDMI outputs supporting multiview PORTRAIT and LANDSCAPE display mode. It enables user to display simultaneously maximum four HDMI sources on two vertical screens or 2 horizontal screens (4K@60Hz 4:4:4). It is super easy to use and control via its web user interface, Telnet & serial ports to customize your HDMI contents layout on monitors.

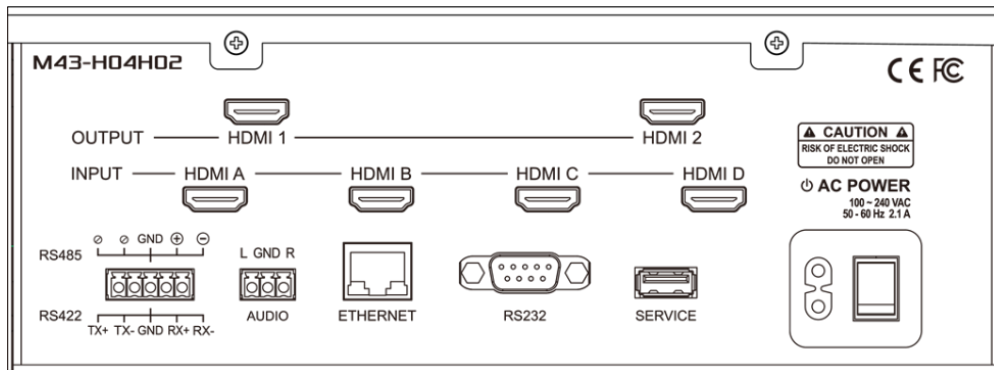
The Landscape and Portrait Display possibility in Multiview 4k60hz mode will satisfy user needs of impressive and singular AV displays in either simple digital signage display or chain store such as show room, chain store, gambling shop, bar, casino & corporate's lobby etc.

FEATURES

- Supports 4 of HDMI 2.0 4K@60 inputs and 2 of HDMI 2.0 4K@60 outputs as splitter
- Fast switching between input channels and combined multiple source images
- Upscaling up to 4K60Hz, 4:4:4 color sampling and able to down scale
- Dual display mode including portrait multiview and landscape multiview
- Supports input resolution and output resolution up to 4K@60Hz 4:4:4 color sampling for each port
- Supports PiP, PoP, and customized window layout configuration
- Full HDCP1.4/2.2 support for input signals and output connections
- HDMI digital audio and HDMI audio de-embedding to analog stereo audio for output
- Control by web UI, RS232, RS422, and RS485
- Firmware upgradable via USB port
- Built-in power supply

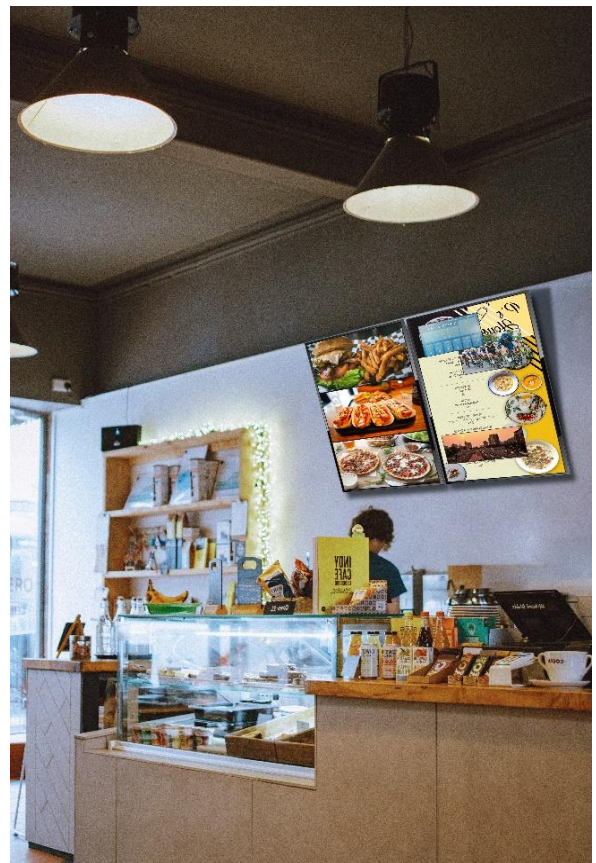
SPECIFICATION

MODEL NO.	M43-H04H02	
INPUT INTERFACE	4 x HDMI 2.0 type A	
INPUT RESOLUTION	640 x 480p@60, 1280 x 720p@60, 1920 x 1080p@60 3840 x 2160p@30, 3840 x 2160p@60	
OUTPUT INTERFACE	2 x HDMI 2.0 type A terminal block 3 pole, stereo	
OUTPUT RESOLUTION	Portrait mode: 720 x 1280p@30, 720 x 1280p@60, 1200 x 1600p@60, 1080 x 1920p@30, 1080 x 1920p@50, 1080 x 1920p@60, 1200 x 1920p@60, 2048 x 2048p@57, 2160 x 3840p@30, 2160 x 3840p@50, 2160 x 3840p@60, 2160 x 4096p@50, 2160 x 4096p@60 Landscape mode: 1280 x 720p@30, 1280 x 720p@60, 1600 x 1200p@60, 1920 x 1080p@30, 1920 x 1080p@50, 1920 x 1080p@60, 1920 x 1200p@60, 2048 x 2048p@57, 3840 x 2160p@30, 3840 x 2160p@50, 3840 x 2160p@60, 4096 x 2160p@50, 4096 x 2160p@60	
OUTPUT COLOR FORMAT	4:4:4, 24 bpp	
HDMI COMPLIANCE	HDMI 1.4 and HDMI 2.0	
BANDWIDTH	18 Gbps	
HDCP COMPLIANCE	HDCP 1.4 and HDCP 2.2	
CONTROL METHODS	RS232	1 x D9 female connector
	RS485 / RS422	5-pole terminal block
	Ethernet	1 x RJ45
FIRMWARE UPGRADE	USB 2.0	
POWER	Power Supply	Built-in power module 100-240ACV (50/60 HZ)
	Power Consumption	32 W
	Redundant Power Supply	no
ENVIRONMENT	Operating Temperature	0°C ~ 40°C
	Operating Humidity	0% ~ 80% RH
	Storage Temperature	-20°C ~ 60°C
DIMENSION	240 x 371 x 88 mm (L x W x H)	
WEIGHT	3.9 KG	



APPLICATION

- Hospitality in lobby, hospital, clinic
- Conference room presentation
- Advertising in shopping mall, supermarket and restaurant
- Broadcast in airport, bus or train station, classroom
- Rental and staging
- Monitoring in control room, bank and stock market
- Simple digital signage in chain store such as show room, gambling shop, bar & casino



Portrait Mode (Vertical Display)

CONNECTION DIAGRAM - PORTRAIT MODE (VERTICAL DISPLAY)

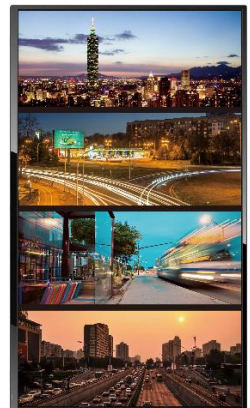


DISPLAY MODE

PIP POP

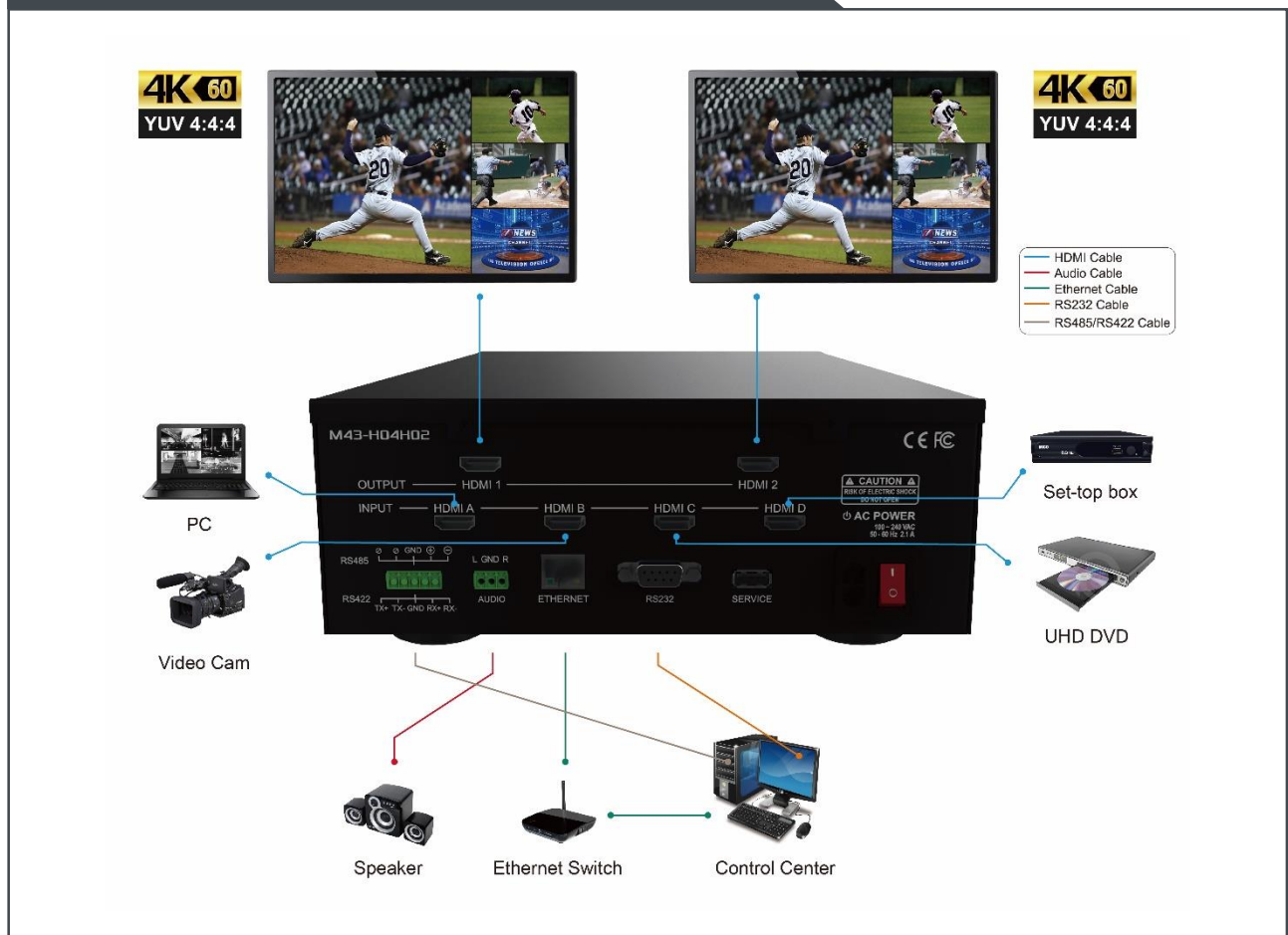


PRE-DEFINED LAYOUT



Landscape Mode (Horizontal Display)

CONNECTION DIAGRAM - LANDSCAPE MODE (HORIZONTAL DISPLAY)



DISPLAY MODE

PIP/POP



PRE-DEFINED LAYOUT

